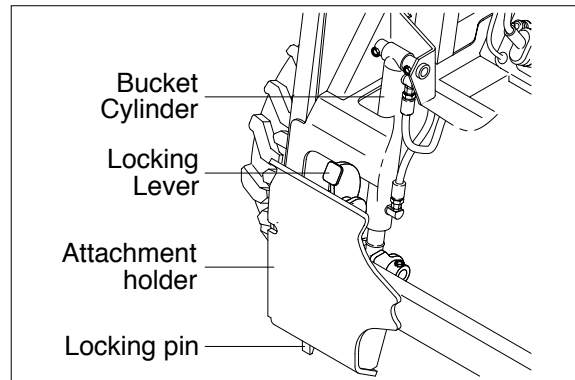


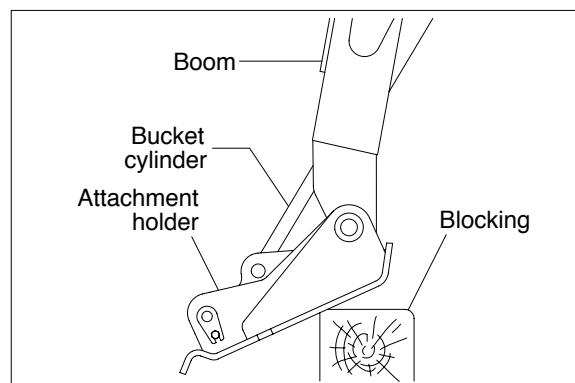
GROUP 4 ATTACHMENT HOLDER

The attachment holder unit provides a structure on which an implement may be attached or removed from the loader. It is secured to the boom and bucket cylinders with pins, bolt and lock nuts. Locking levers and pin are used to secure an implement to the attachment holder assembly.

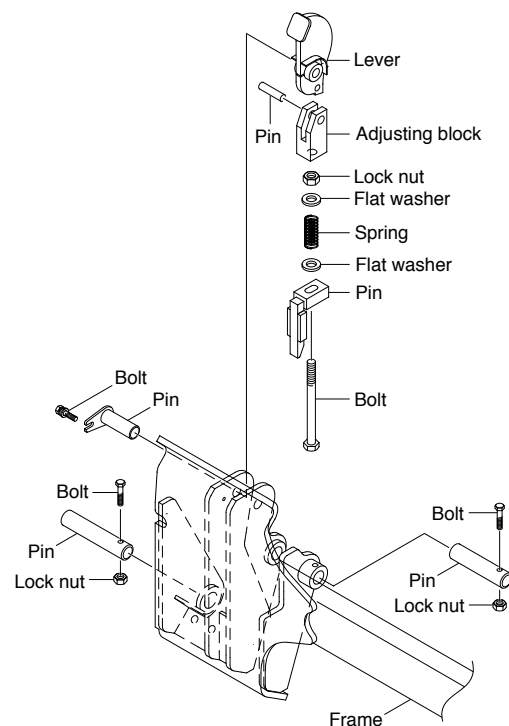


1. REMOVAL

- 1) Remove any implement from the attachment holder.
- 2) Raise the boom and place blocking under the rear of the attachment holder frame.
- 3) Lower the boom until the rear of the attachment holder frame is supported by the blocking.
- 4) Tilt the attachment holder forward until the front of the frame rests on the ground.
- 5) Shut off the engine.
- 6) Cycle the foot pedals to relieve any hydraulic pressure in the system
- 7) Remove the bolt, lock nut and pin attaching the bucket cylinder to the attachment holder frame.
- 8) Remove the attachment holder from the boom.

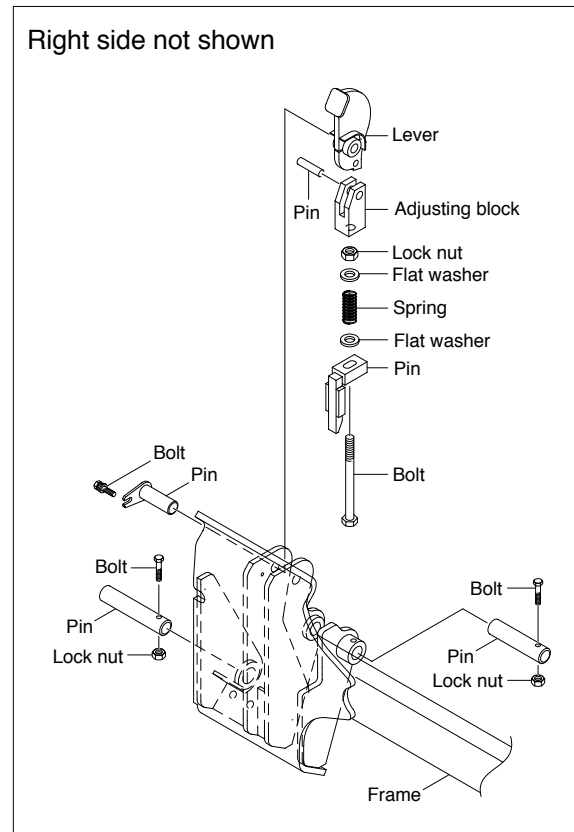


Right side not shown



2. INSTALL

- 1) Position the attachment holder between the boom.
- 2) Put a floor jack under the attachment holder and raise it until the boom hinge and attachment holder bushings are aligned.
- 3) Install the boom hinge pin and secure it with a bolt and lock nut.
- 4) Install the bucket cylinder hinge pin and secure it with a bolt and lock nut.
- 5) Lubricate the hinge pins at the appropriate fittings.



3. LOCK PIN ADJUSTMENT

- 1) Raise the boom slightly and tilt the attachment holder forward just far enough so the locking levers can be kicked back.
- 2) Turn the engine off and exit the loader.
- 3) Kick both locking levers back until the locking pins have fully retracted into the attachment holder.
- 4) Measure from the top of the attachment holder frame to the bottom of the locking pin. If the dimension is not 400mm, adjust to the locking pin as follows.
- 5) Loosen the lock nut under the adjusting block.
- 6) Adjust the bolt until a 400mm dimension is achieved.
- 7) Tighten the lock nut.
- 8) Repeat the procedure for the other locking pin assembly.

