

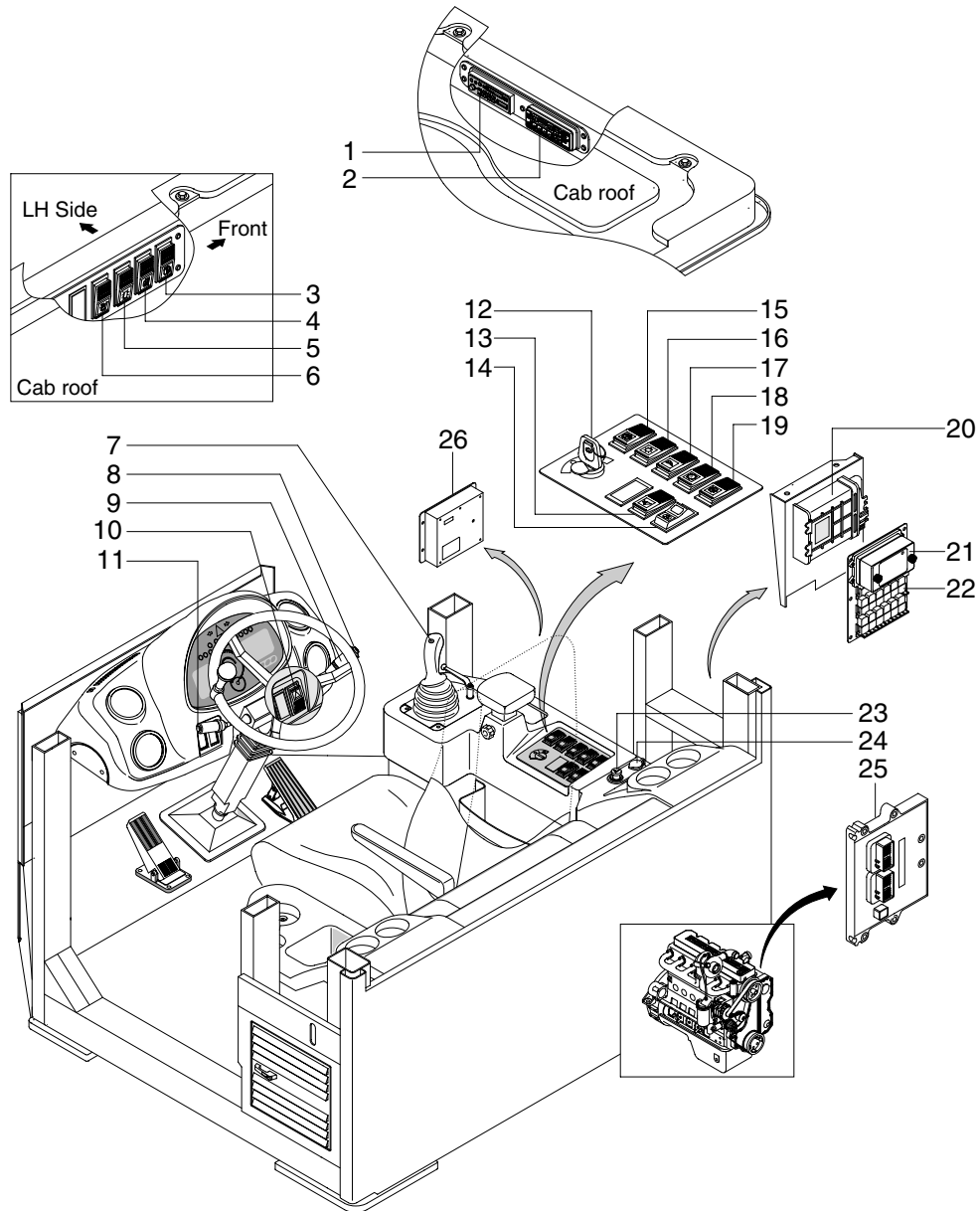
SECTION 7 ELECTRICAL SYSTEM

Group 1 Component Location	7-1
Group 2 Electrical Circuit	7-3
Group 3 Monitoring System	7-21
Group 4 Electrical Component Specification	7-38
Group 5 Connectors	7-45
Group 6 Troubleshooting	7-65

SECTION 7 ELECTRICAL SYSTEM

GROUP 1 COMPONENT LOCATION

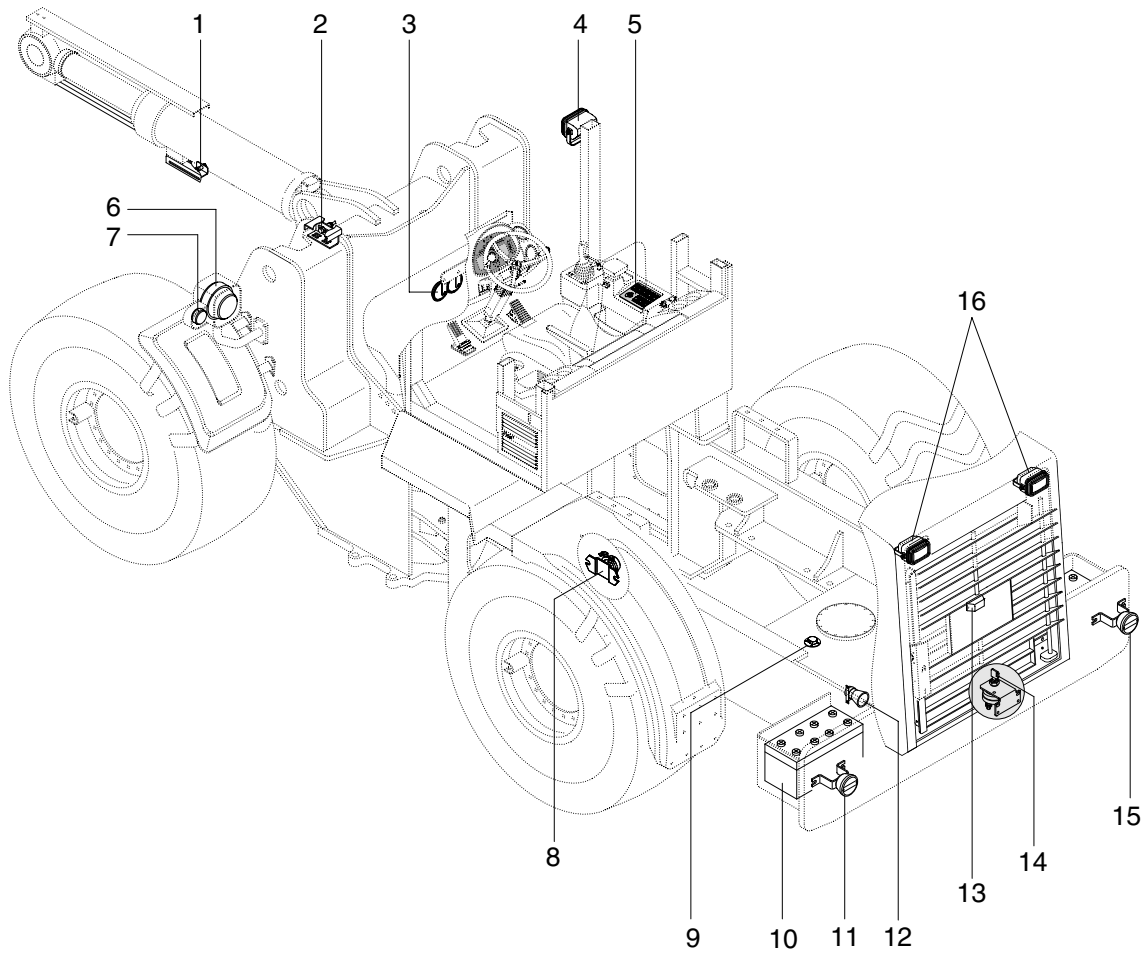
1. LOCATION 1



7607AEL02

- | | | | | | |
|---|---|----|-------------------------------|----|--------------------------------|
| 1 | Radio & cassette(STD)
Radio & CD player(OPT) | 9 | Multi function switch | 18 | Auto select switch |
| 2 | Aircon & heater switch | 10 | Hazard switch | 19 | Clutch cut off switch |
| 3 | Rear wiper/washer switch | 11 | Kick down switch | 20 | Transmission control unit(TCU) |
| 4 | Mirror defrost switch(Optional) | 12 | Starting switch | 21 | Fuse box |
| 5 | Beacon switch(Optional) | 13 | Ride control switch(Optional) | 22 | Relay board |
| 6 | Heated seat switch(Optional) | 14 | Pump motor switch(Optional) | 23 | Cigar lighter |
| 7 | Kick down switch | 15 | Parking brake switch | 24 | 12V socket |
| 8 | Horn button | 16 | Main light switch | 25 | Engine control module(ECM) |
| | | 17 | Work lamp switch | 26 | Machine control unit(MCU) |

2. LOCATION 2



7707AEL02-1

- | | | | | | |
|---|------------------|----|-----------------|----|-------------------|
| 1 | Proximity switch | 7 | Front turn lamp | 12 | Back up buzzer |
| 2 | Proximity switch | 8 | Start relay | 13 | Number plate lamp |
| 3 | Horn | 9 | Fuel sender | 14 | Master switch |
| 4 | Work lamp | 10 | Battery | 15 | Rear combi lamp |
| 5 | Switch panel | 11 | Rear combi lamp | 16 | Work lamp |
| 6 | Head lamp | | | | |

