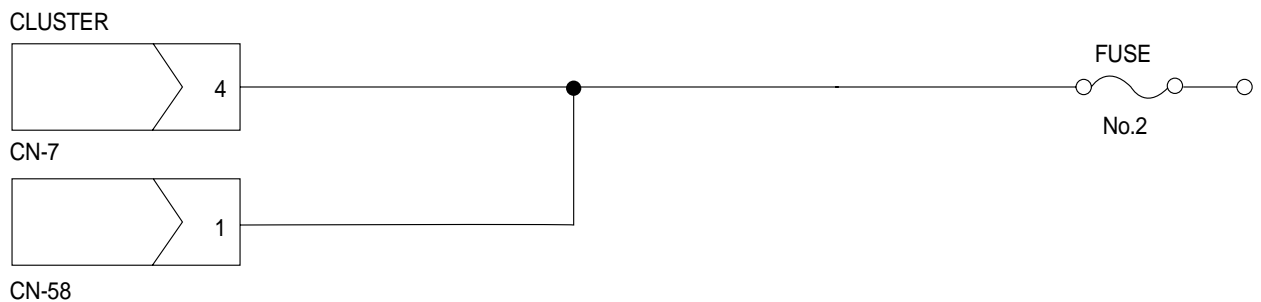
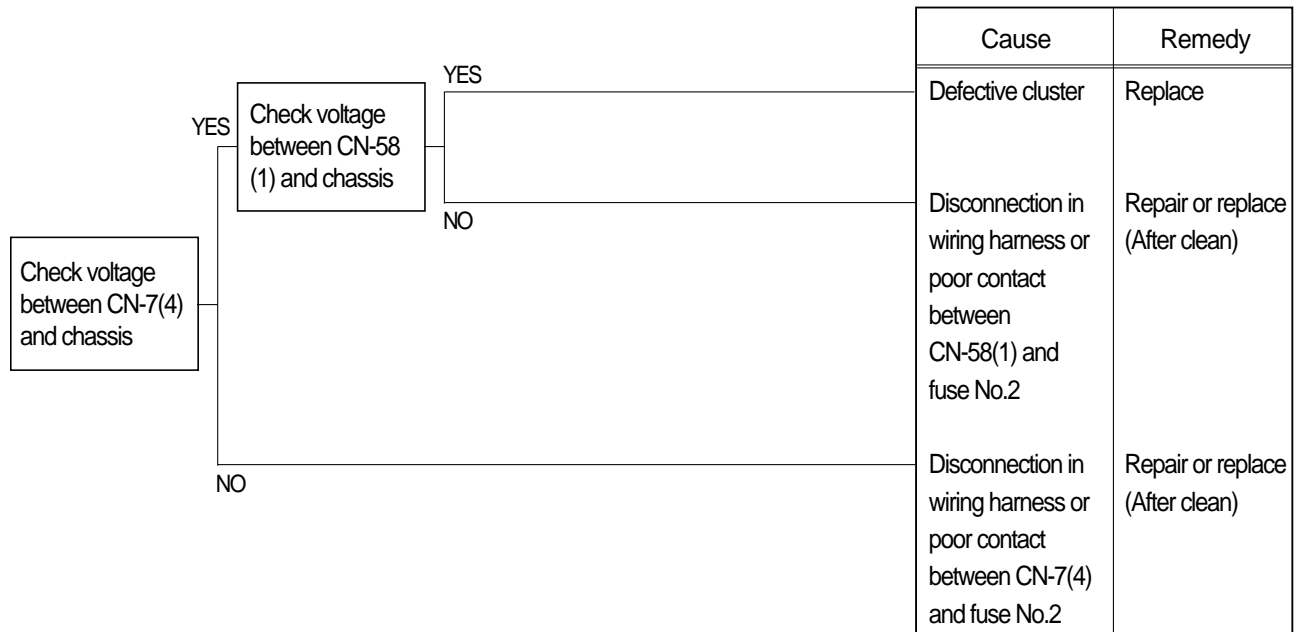


## GROUP 6 TROUBLESHOOTING

### 1. WHEN STARTING SWITCH IS TURNED ON, CLUSTER LAMP DOES NOT LIGHT UP

- Before carrying out below procedure, check all the related connectors are properly inserted and the fuse No.2 is not blown out and ON/OFF of bulb.
- After checking, connect the disconnected connectors again immediately unless otherwise specified.

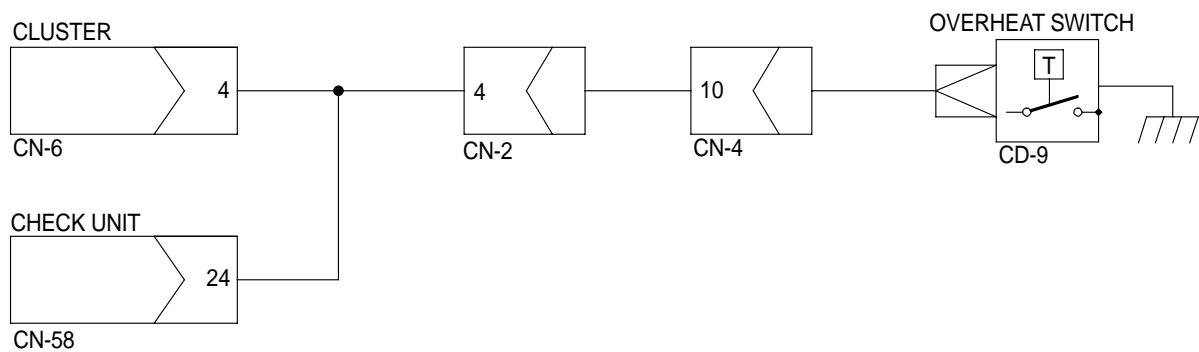
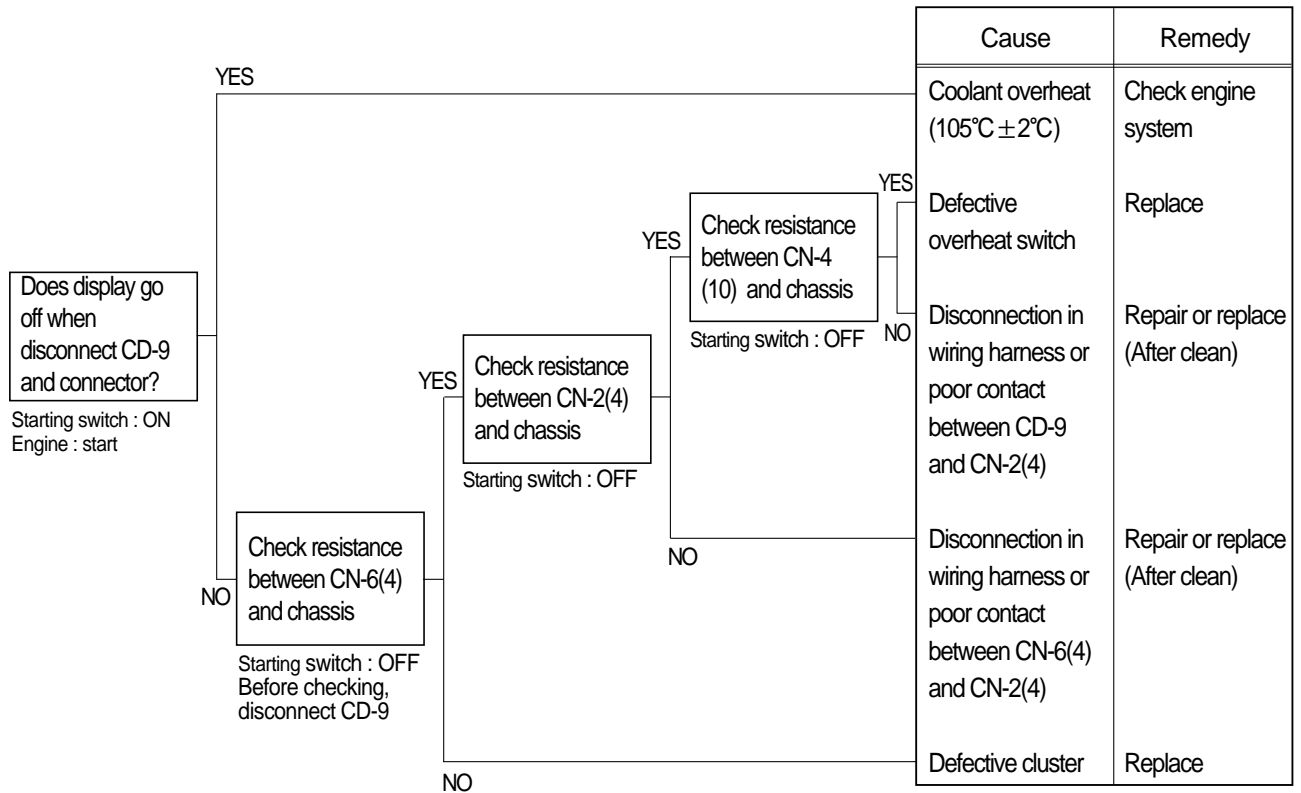


#### Check voltage

|     |          |
|-----|----------|
| YES | 20 ~ 30V |
| NO  | 0V       |

## 2. WHEN COOLANT OVERHEAT LAMP LIGHTS UP(Engine is started)

- Before carrying out below procedure, check all the related connectors are properly inserted.
- After checking, connect the disconnected connectors again immediately unless otherwise specified.

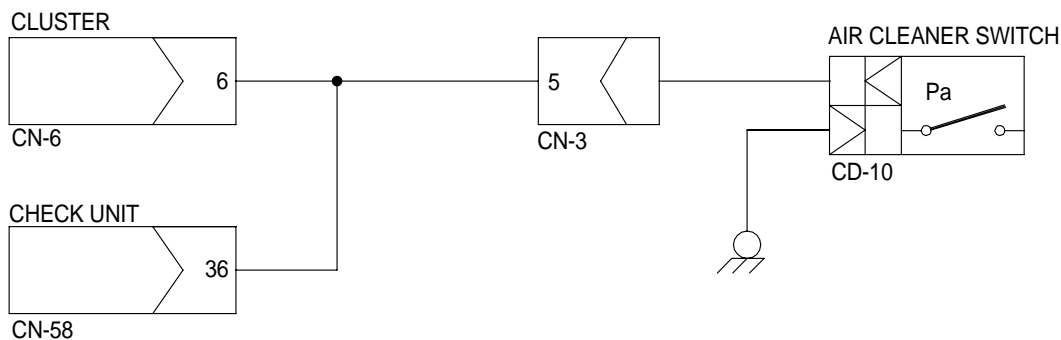
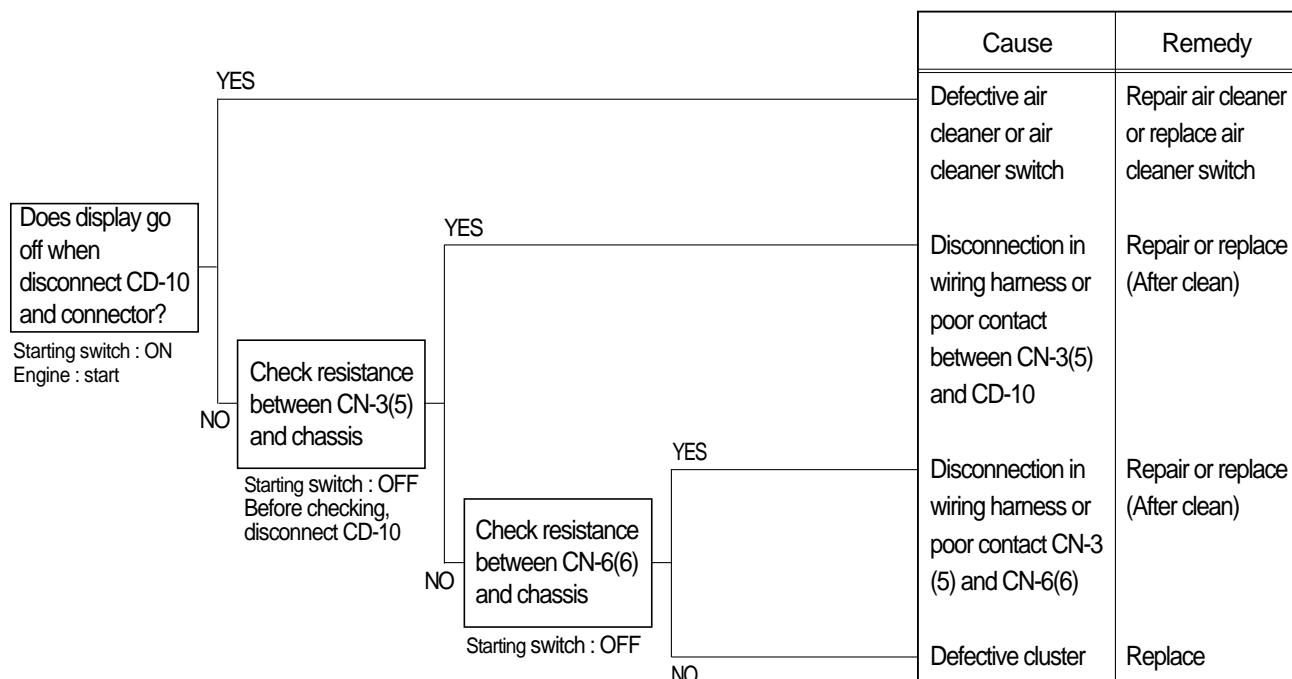


### Check resistance

|     |          |
|-----|----------|
| YES | MAX 1 Ω  |
| NO  | MIN 1M Ω |

### 3. WHEN AIR CLEANER LAMP LIGHTS UP(Engine is started)

- Before carrying out below procedure, check all the related connectors are properly inserted.
- After checking, connect the disconnected connectors again immediately unless otherwise specified.

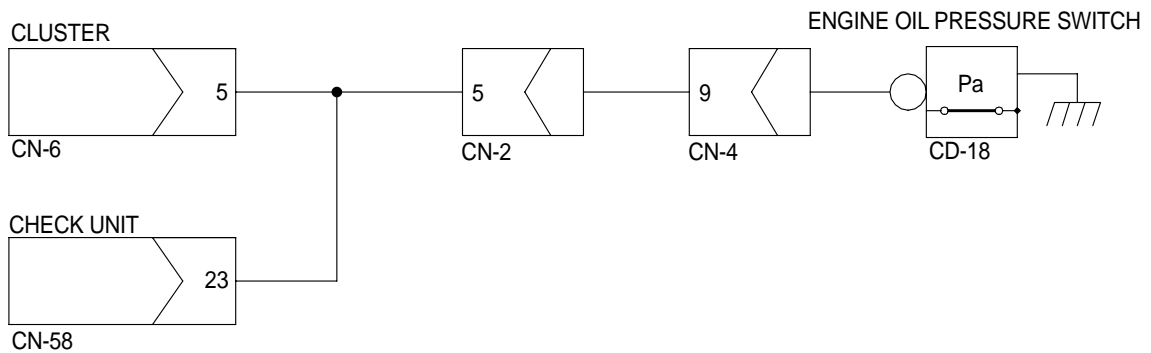
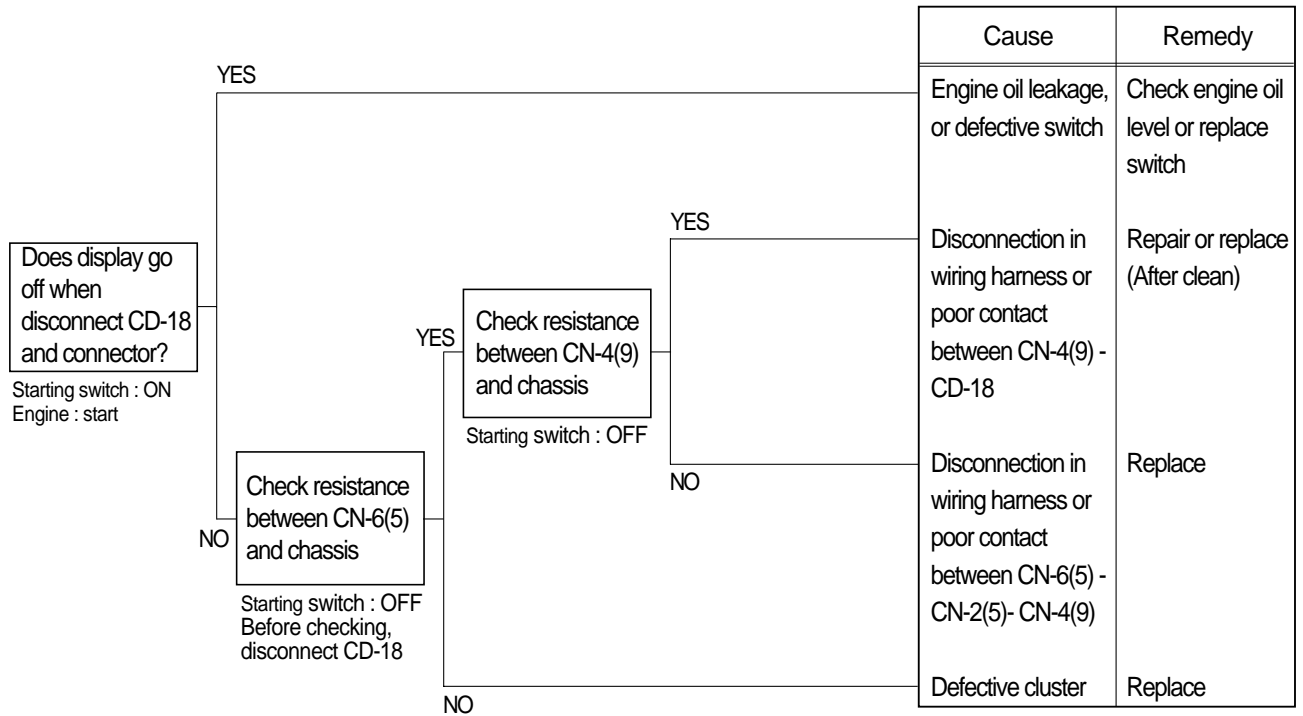


#### Check resistance

|     |                 |
|-----|-----------------|
| YES | MAX 1 $\Omega$  |
| NO  | MIN 1M $\Omega$ |

#### 4. WHEN ENGINE OIL PRESSURE LAMP LIGHTS UP(Engine is started)

- Before carrying out below procedure, check all the related connectors are properly inserted.
- After checking, connect the disconnected connectors again immediately unless otherwise specified.

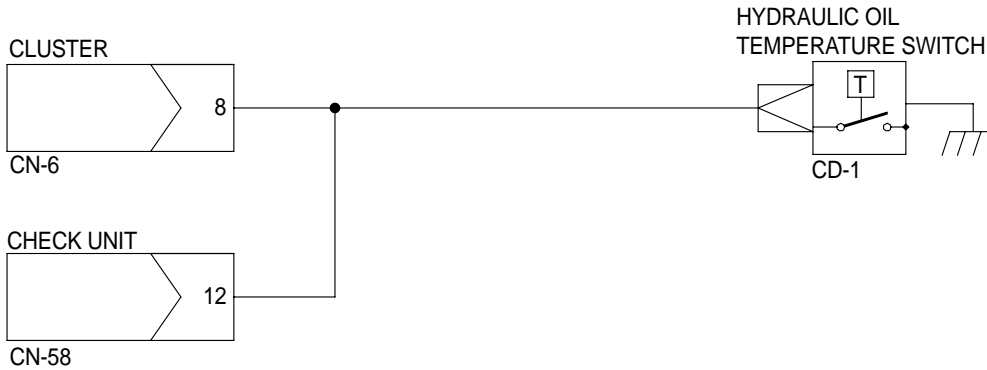
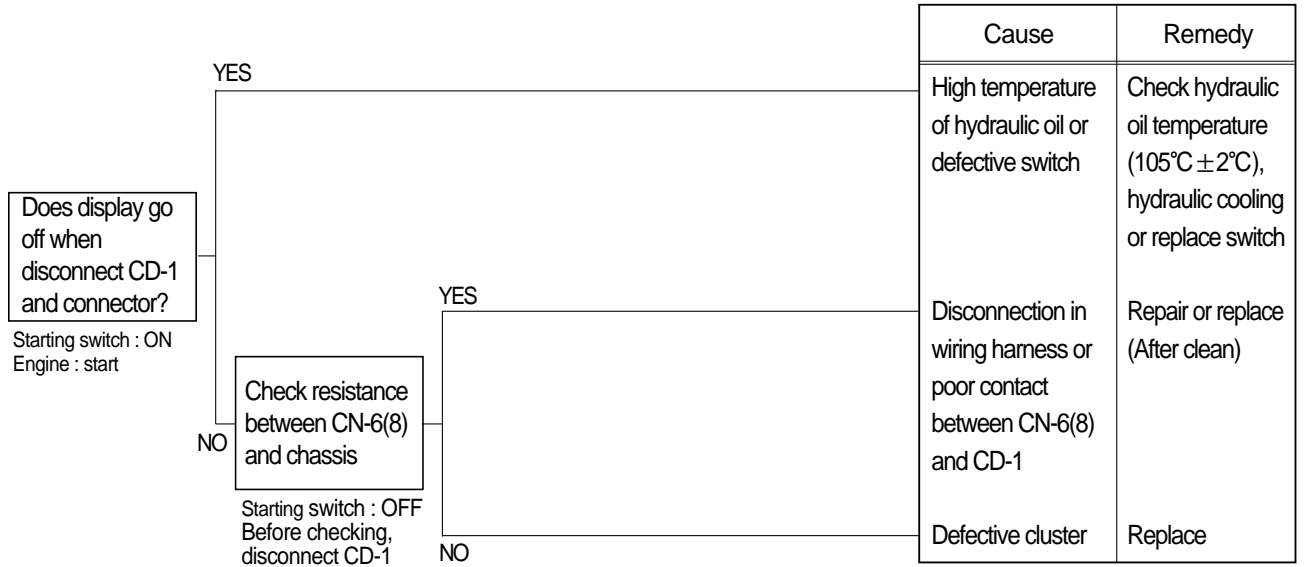


#### Check resistance

|     |                 |
|-----|-----------------|
| YES | MAX 1 $\Omega$  |
| NO  | MIN 1M $\Omega$ |

5.  **WHEN HYDRAULIC OIL TEMPERATURE LAMP LIGHTS UP**(Engine is started)

- Before carrying out below procedure, check all the related connectors are properly inserted.
- After checking, connect the disconnected connectors again immediately unless otherwise specified.



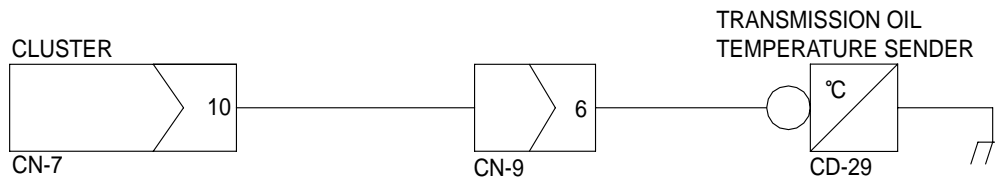
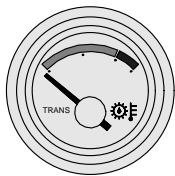
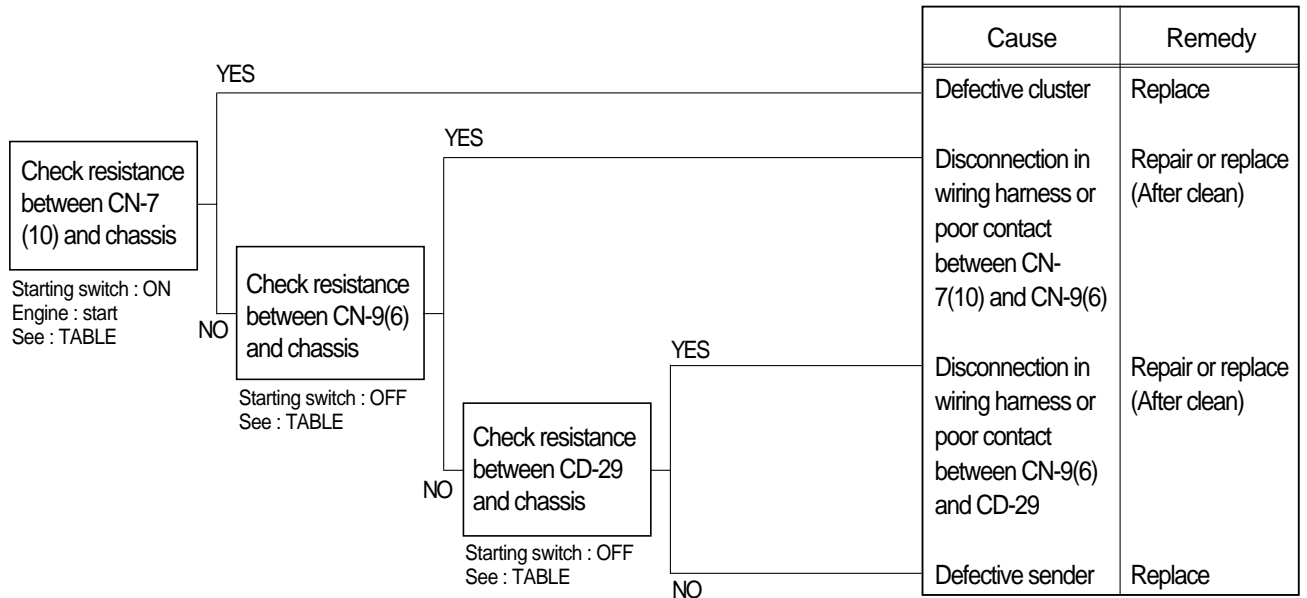
**Check resistance**

|     |          |
|-----|----------|
| YES | MAX 1 Ω  |
| NO  | MIN 1M Ω |

## 6. WHEN TORQUE CONVERTER OIL TEMPERATURE GAUGE DOES NOT OPERATE

(Check torque converter oil temperature lamp ON/OFF)

- Before carrying out below procedure, check all the related connectors are properly inserted.
- After checking, connect the disconnected connectors again immediately unless otherwise specified.



### Check resistance

|     |          |
|-----|----------|
| YES | MAX 1 Ω  |
| NO  | MIN 1M Ω |

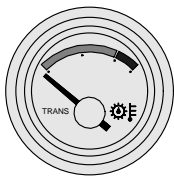
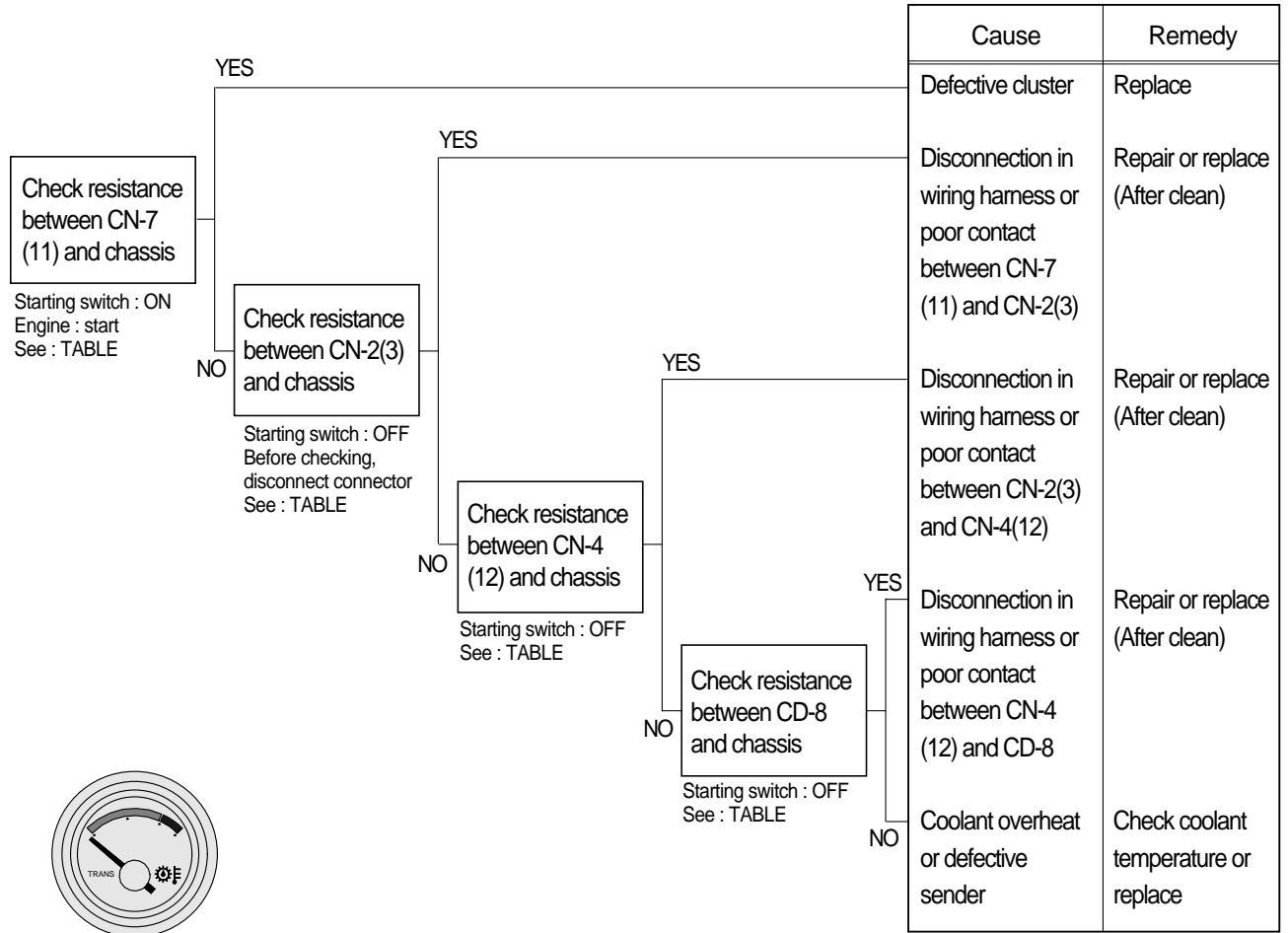
### Check table

| Temperature<br>Item  | 50°C      | 92°C | 120°C | 130°C     |
|----------------------|-----------|------|-------|-----------|
| Unit resistance( Ω ) | 168.7     | (34) | 19.5  | 12.4      |
| Tolerance            | 0° ~ -10° | (-)  | ±3°   | +10° ~ 0° |
| Angle                | -30°      | -8°  | +27°  | +30°      |

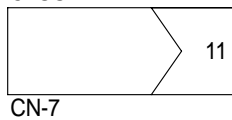
## 7. WHEN COOLANT TEMPERATURE GAUGE DOES NOT OPERATE

(Check coolant temperature lamp ON/OFF)

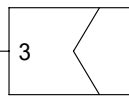
- Before carrying out below procedure, check all the related connectors are properly inserted.
- After checking, connect the disconnected connectors again immediately unless otherwise specified.



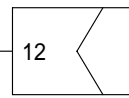
CLUSTER



CN-7

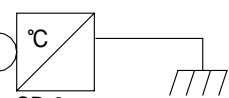


CN-2



CN-4

WATER TEMPERATURE SENDER



CD-8

### Check resistance

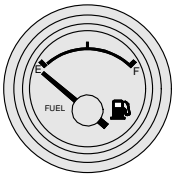
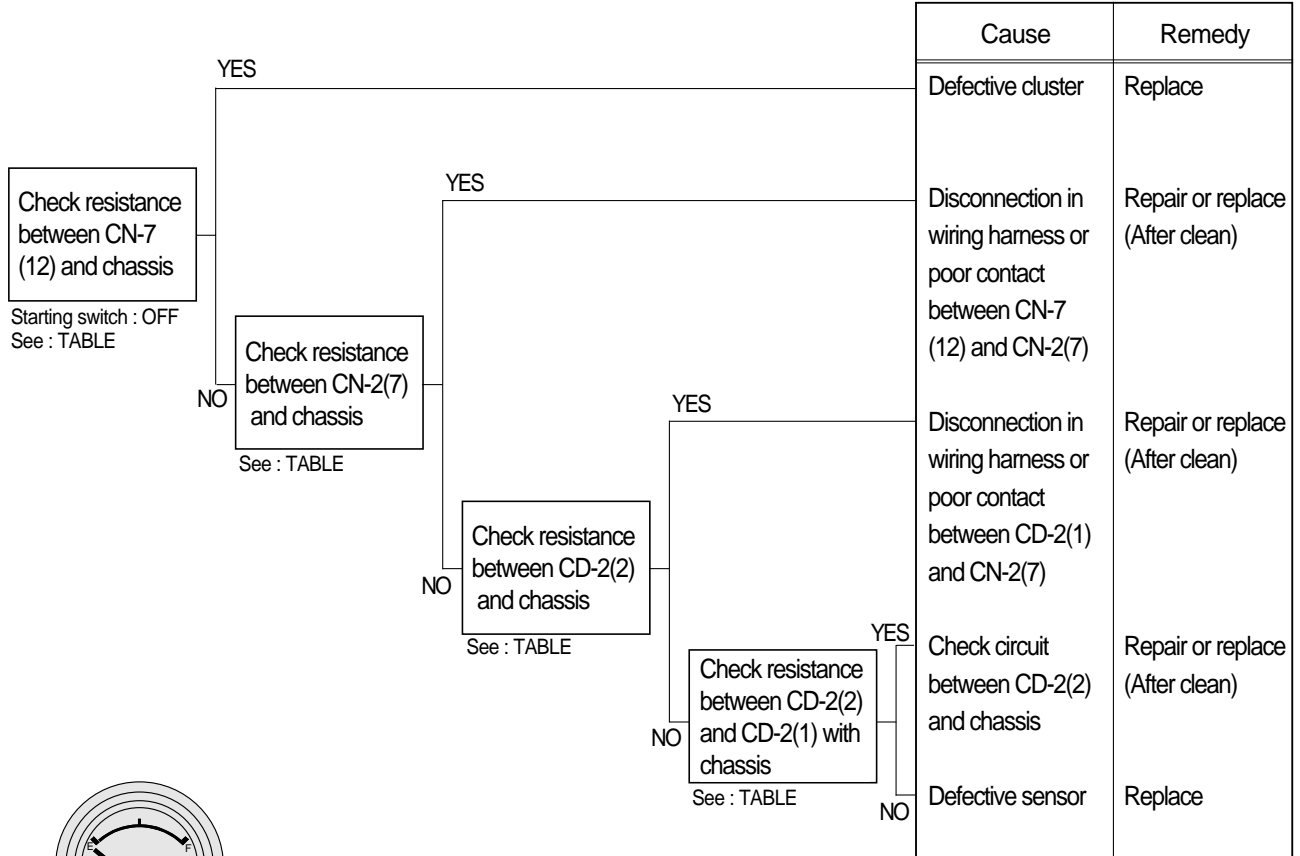
|     |                 |
|-----|-----------------|
| YES | MAX 1 $\Omega$  |
| NO  | MIN 1M $\Omega$ |

### Check table

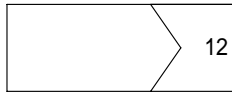
| Temperature<br>Item         | (40°C)        | 91°C   | 105°C     | 120°C |
|-----------------------------|---------------|--------|-----------|-------|
| Unit resistance( $\Omega$ ) | 222           | (41.3) | 28        | 19.2  |
| Tolerance                   | $\pm 5^\circ$ | (-)    | $\pm 4.5$ | (-)   |
| Angle                       | -30°          | 0°     | +13°      | +30°  |

## 8. WHEN FUEL GAUGE DOES NOT OPERATE (Check warning lamp ON/OFF)

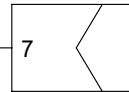
- Before carrying out below procedure, check all the related connectors are properly inserted.
- After checking, connect the disconnected connectors again immediately unless otherwise specified.



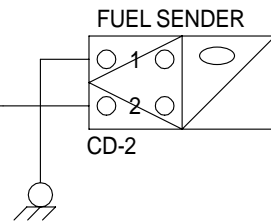
CLUSTER



CN-7



CN-2



FUEL SENDER

CD-2

### Check resistance

|     |          |
|-----|----------|
| YES | MAX 1 Ω  |
| NO  | MIN 1M Ω |

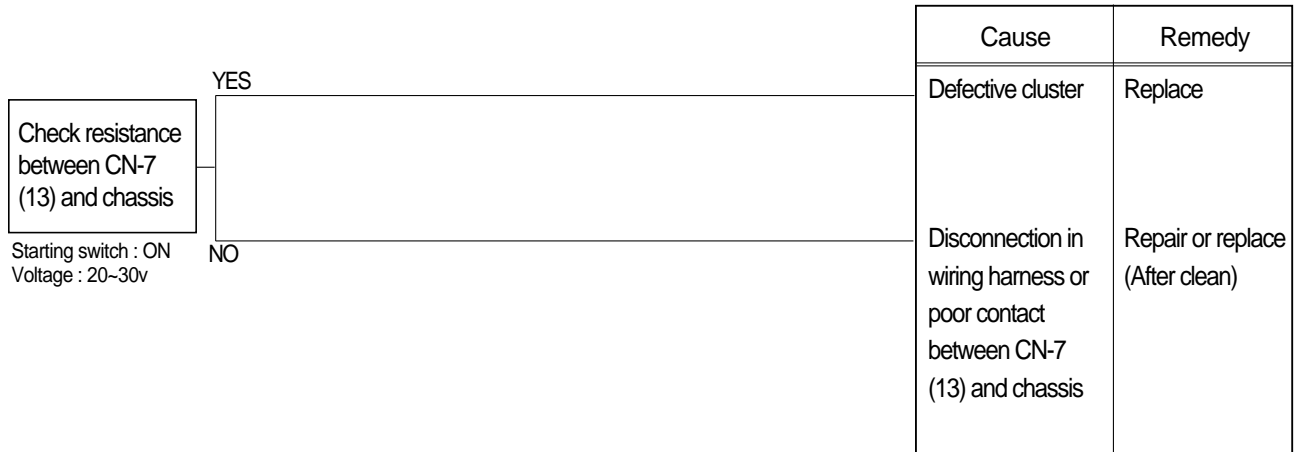
### Check table

| Temperature Item     | Empty | (1/2)  | Full  |
|----------------------|-------|--------|-------|
| Unit resistance( Ω ) | 95    | (32.5) | 7     |
| Tolerance            | ±2.5° | ±5°    | ±2.5° |
| Angle                | -30°  | 0°     | +30°  |

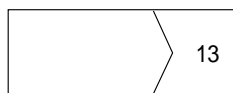


## 9. WHEN GAUGES OF FUEL, HYDRAULIC OIL AND COOLANT INDICATE HIGH OR FULL

- Before carrying out below procedure, check all the related connectors are properly inserted.
- After checking, connect the disconnected connectors again immediately unless otherwise specified.



CLUSTER



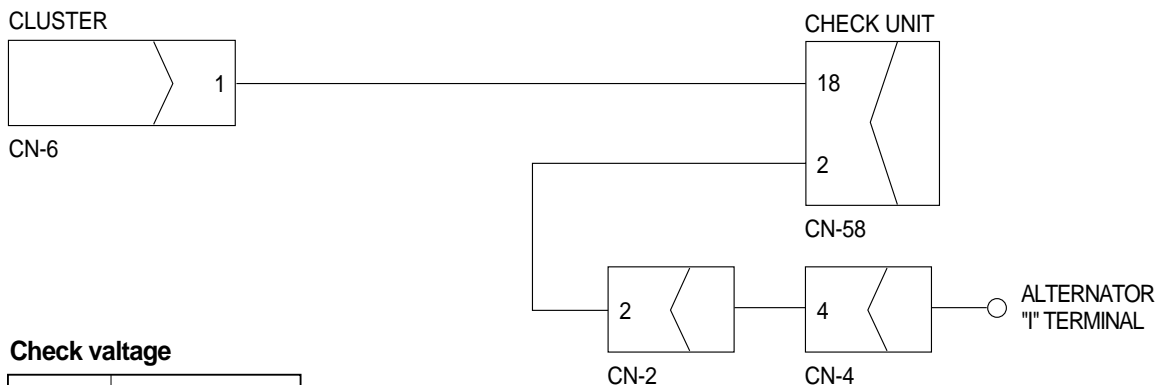
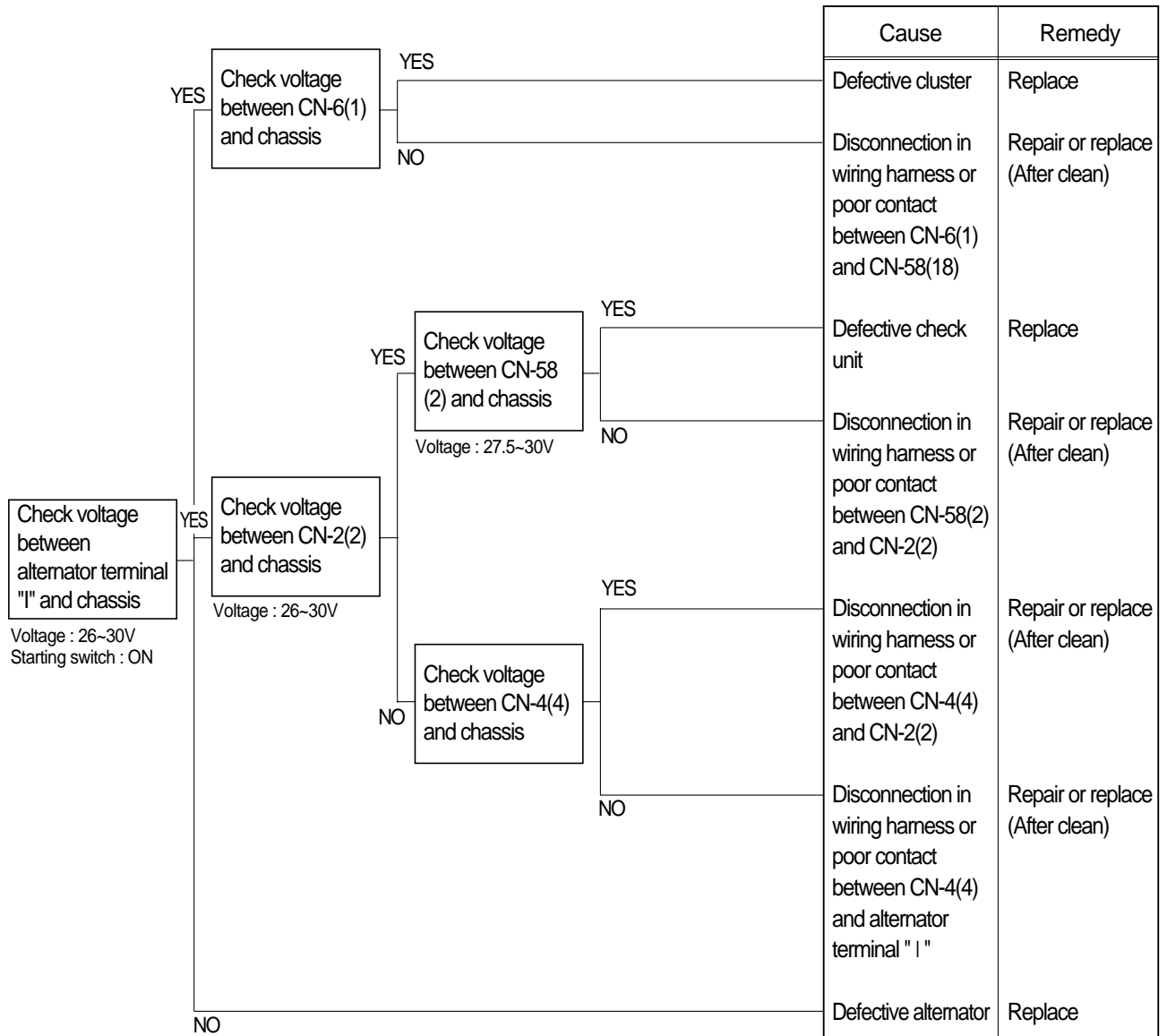
CN-7

**Check resistance**

|     |          |
|-----|----------|
| YES | MAX 1 Ω  |
| NO  | MIN 1M Ω |

10.  **WHEN BATTERY LAMP LIGHTS UP**(Engine is started)

- Before carrying out below procedure, check all the related connectors are properly inserted.
- After checking, connect the disconnected connectors again immediately unless otherwise specified.

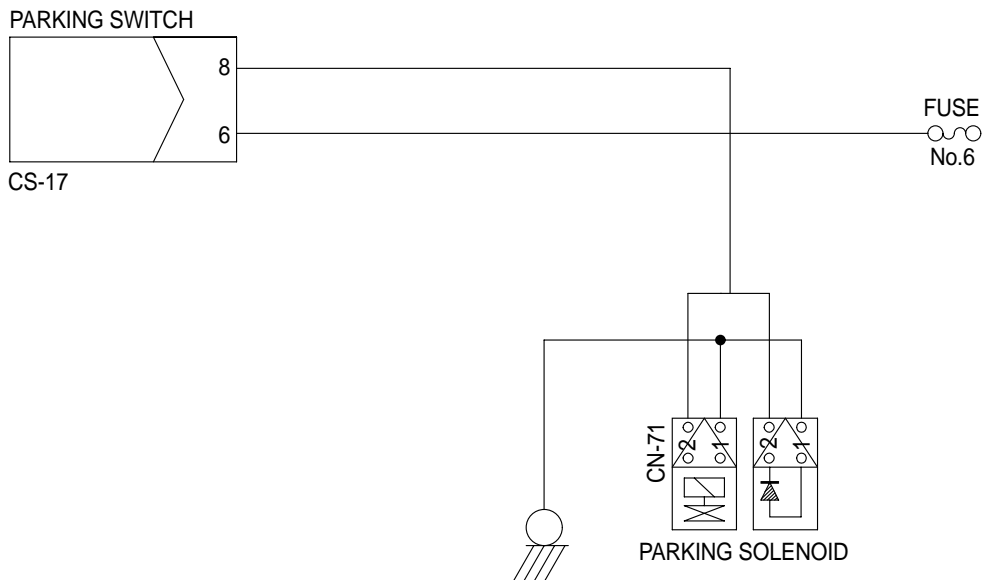
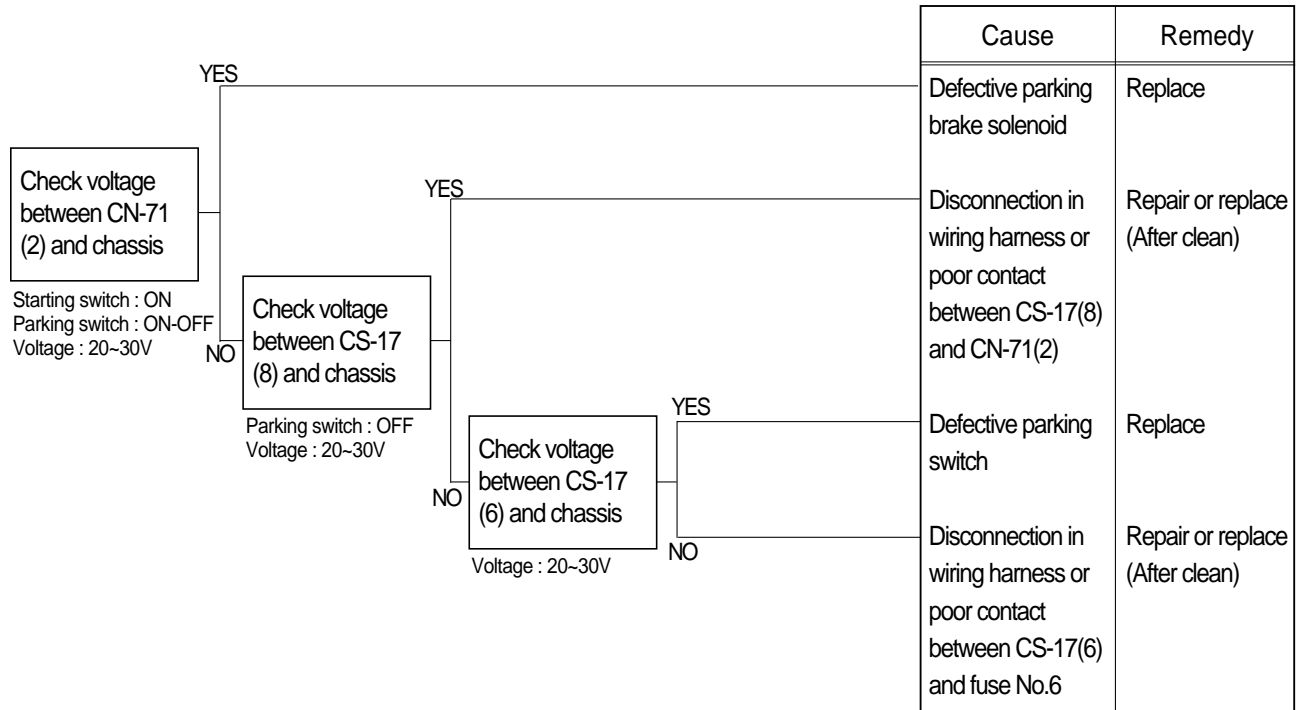


**Check voltage**

|     |          |
|-----|----------|
| YES | 20 ~ 30V |
| NO  | 0V       |

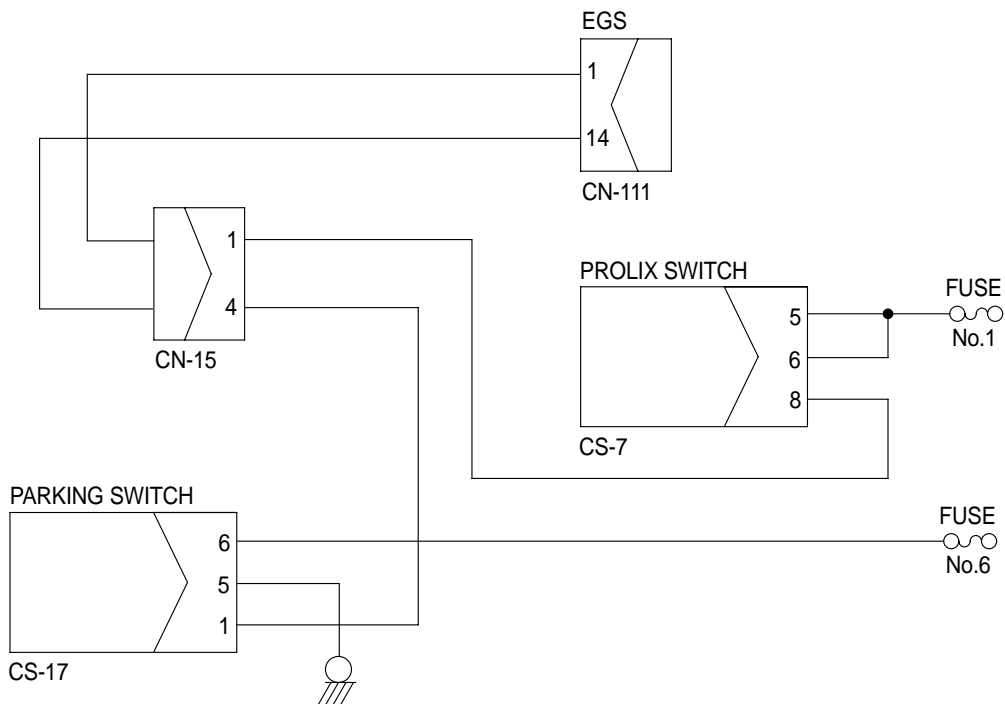
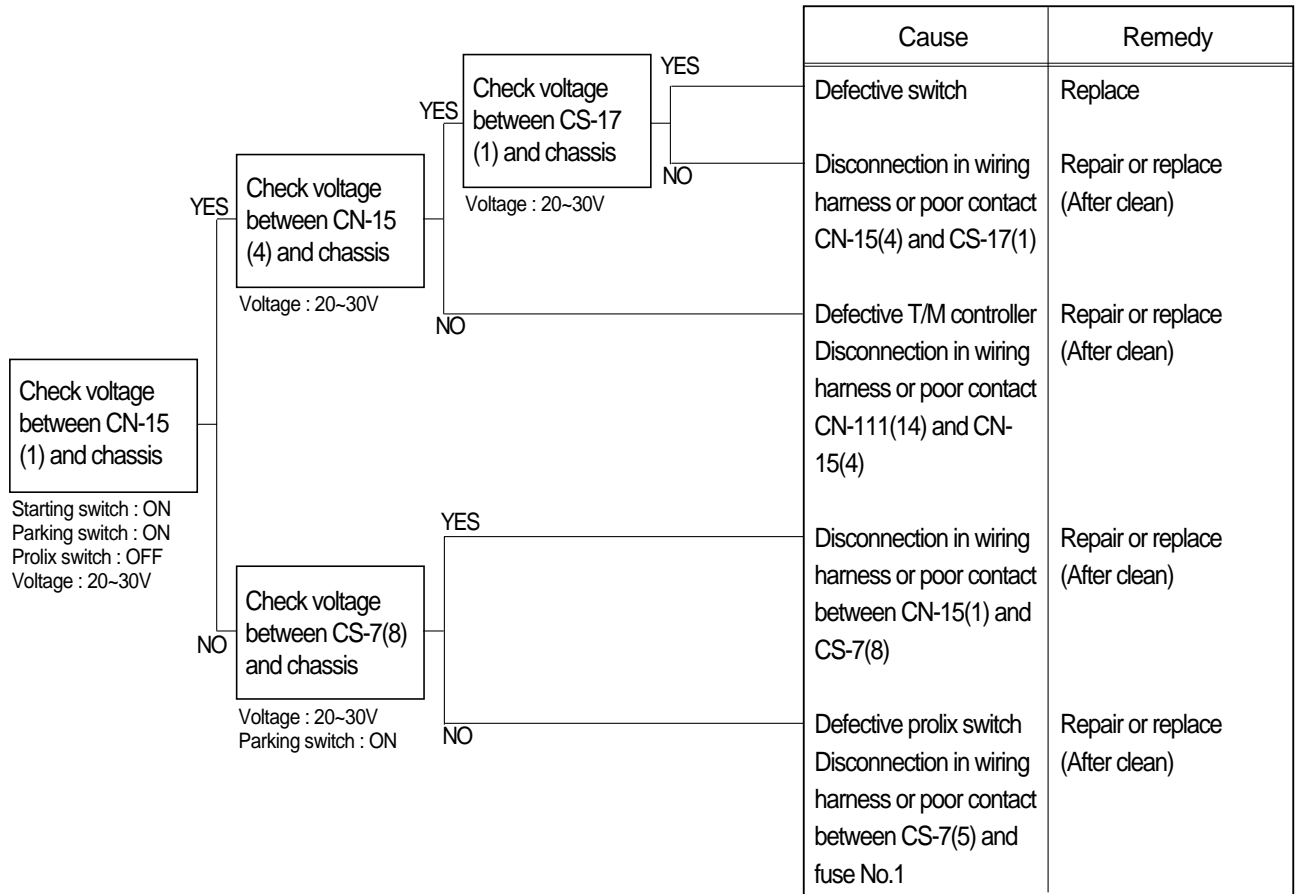
## 11. WHEN PARKING SOLENOID DOES NOT WORK

- Before carrying out below procedure, check all the related connectors are properly inserted and the fuse No.6 is not blown out.
- After checking, connect the disconnected connectors again immediately unless otherwise specified.



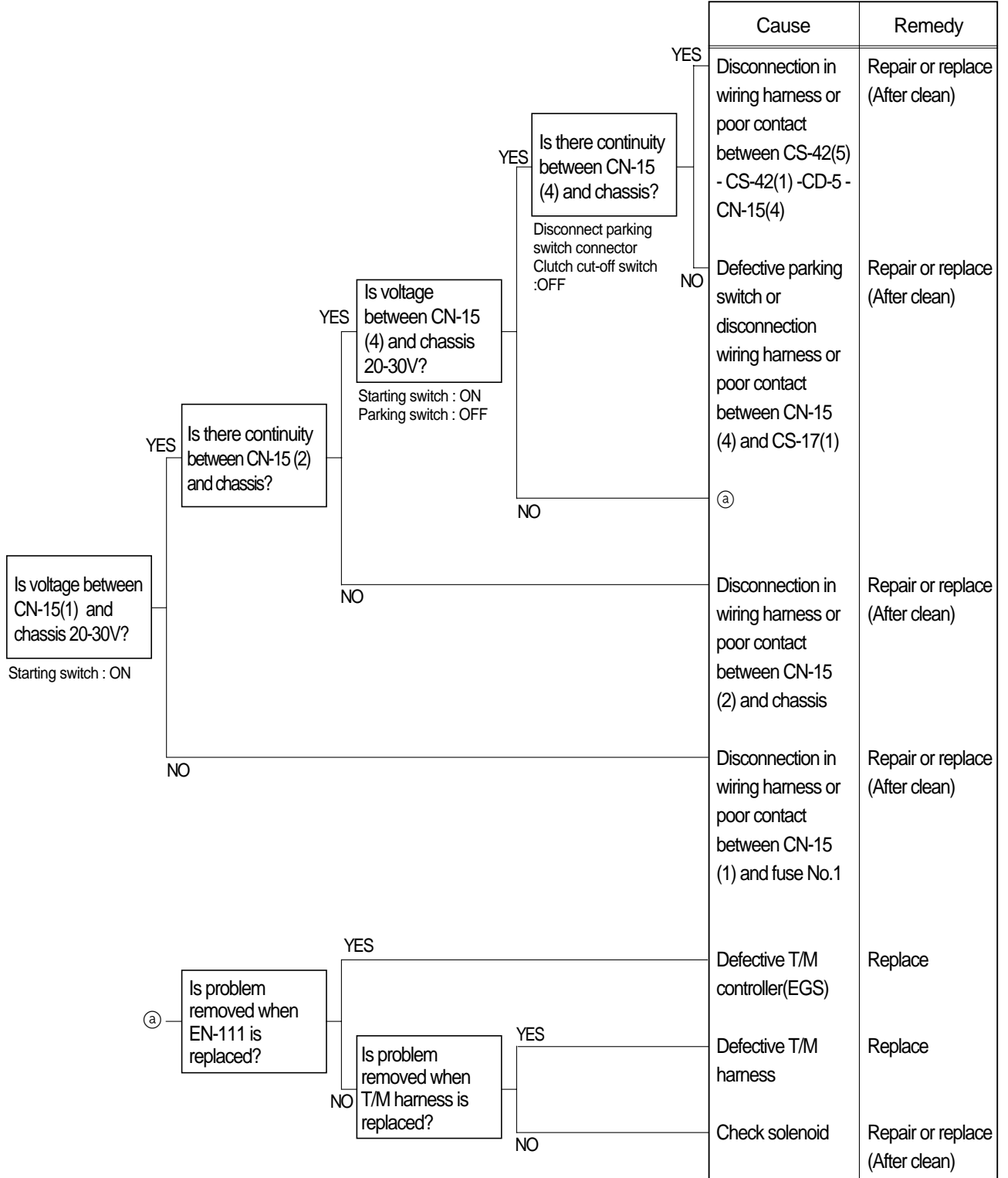
## 12. TRANSMISSION IS NOT RETURNED TO NEUTRAL WHEN PARKING BRAKE IS APPLIED

- Before carrying out below procedure, check all the related connectors are properly inserted and the fuse No.1(Transmission controller) and No.6 are not blown out.
- After checking, connect the disconnected connectors again immediately unless otherwise specified.



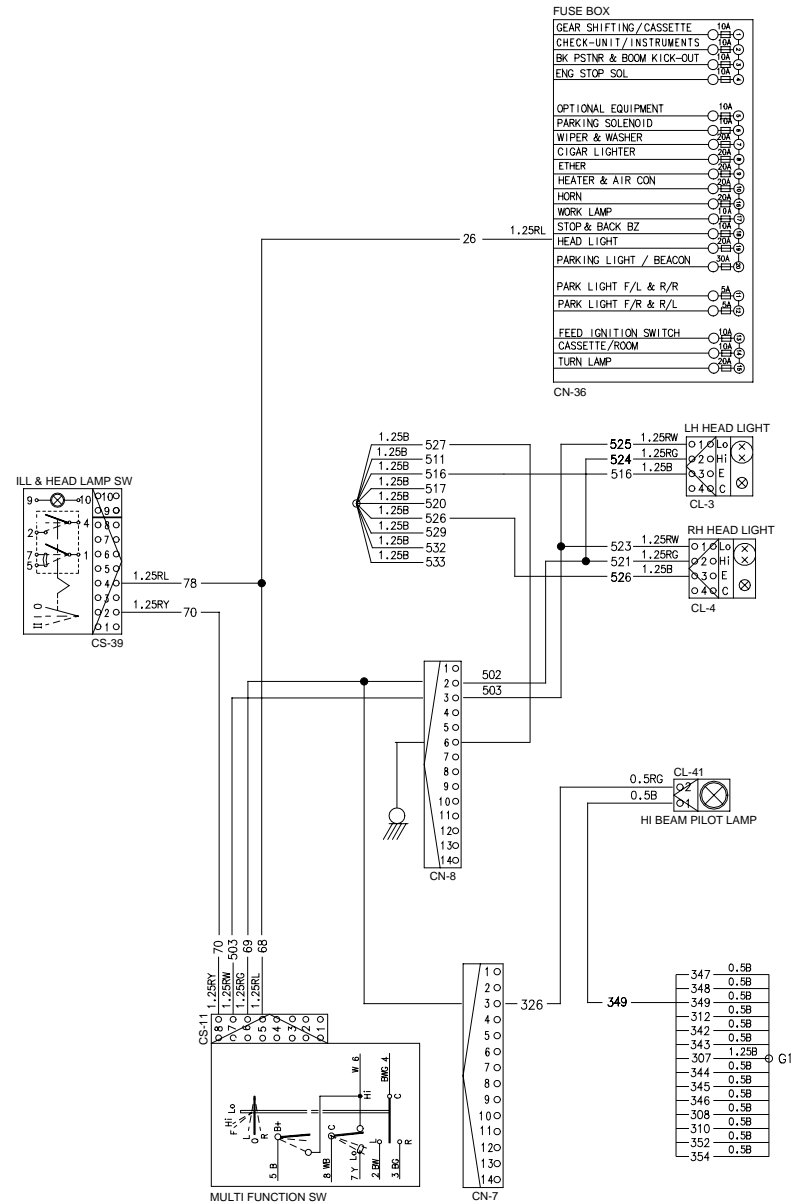
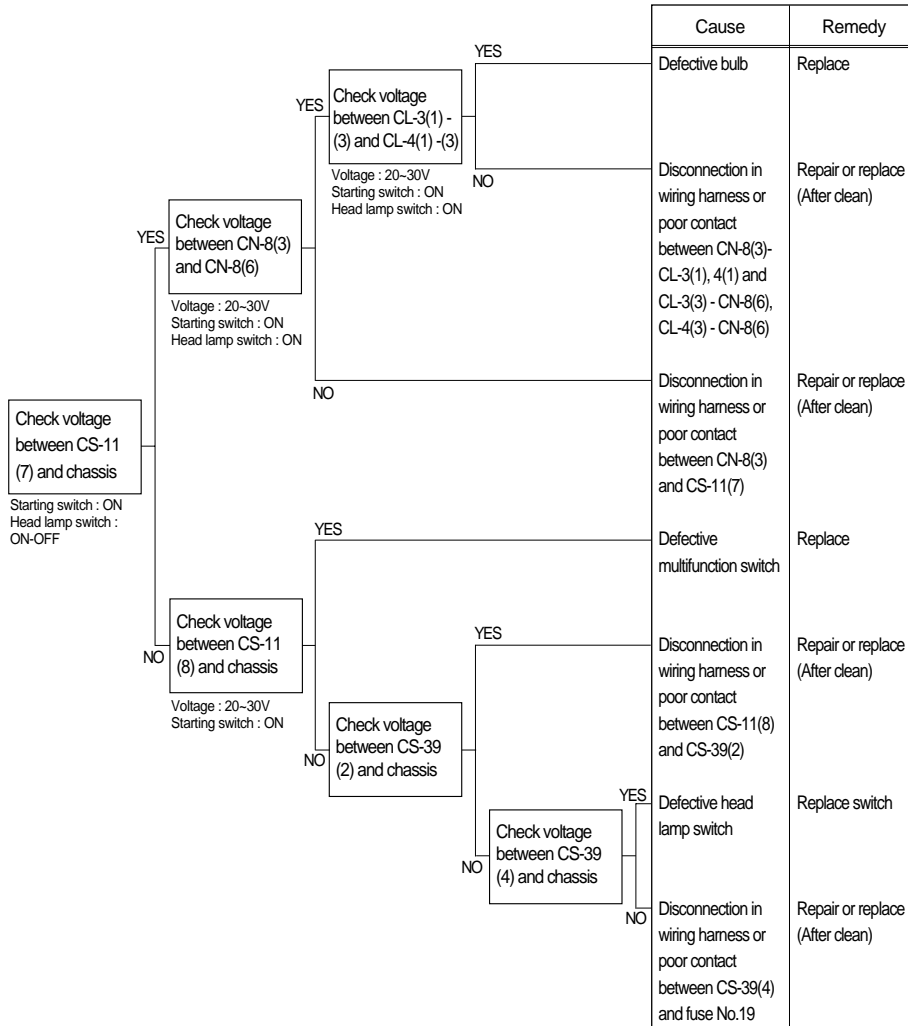
### 13. MACHINE DOES NOT TRAVEL

- Before carrying out below procedure, check all the related connectors are properly inserted and the fuse No.1(Transmission controller) is not blown out.
- After checking, connect the disconnected connectors again immediately unless otherwise specified.
- Wiring diagram : **See page 7-17.**



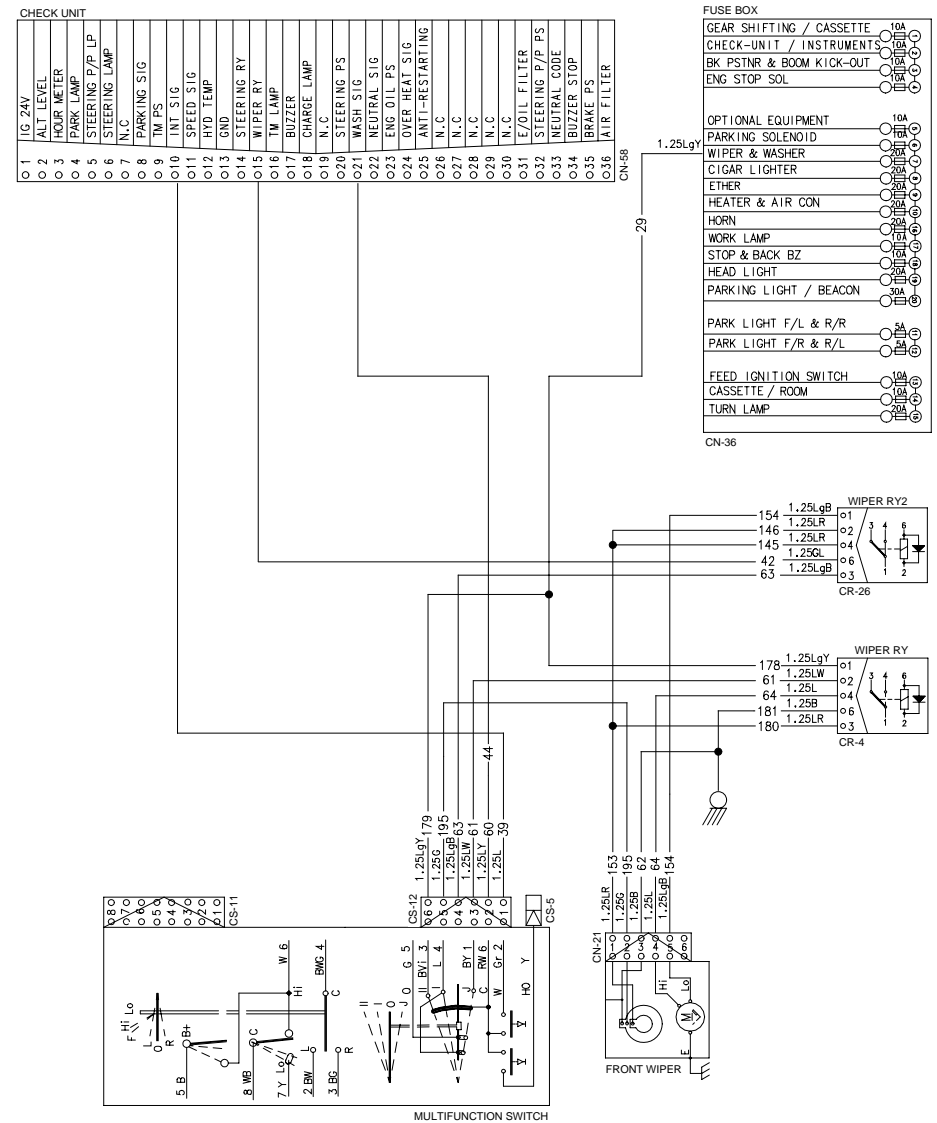
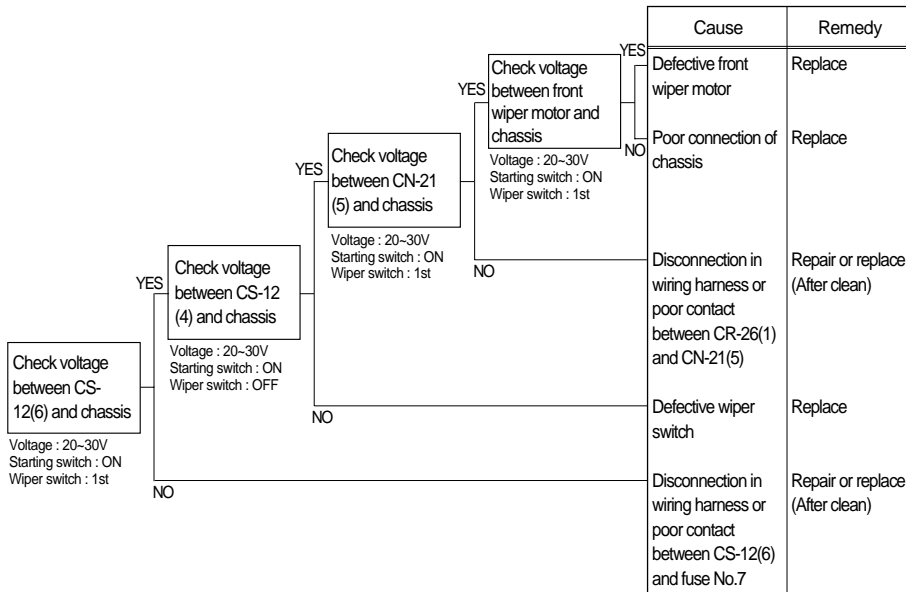
### 14. WHEN STARTING SWITCH IS TURNED ON, HEAD LAMP DOES NOT LIGHTS UP

- Before carrying out below procedure, check all the related connectors are properly inserted and the fuse No.19 is not blown out and ON/OFF of bulb.
- After checking, connect the disconnected connectors again immediately unless otherwise specified.



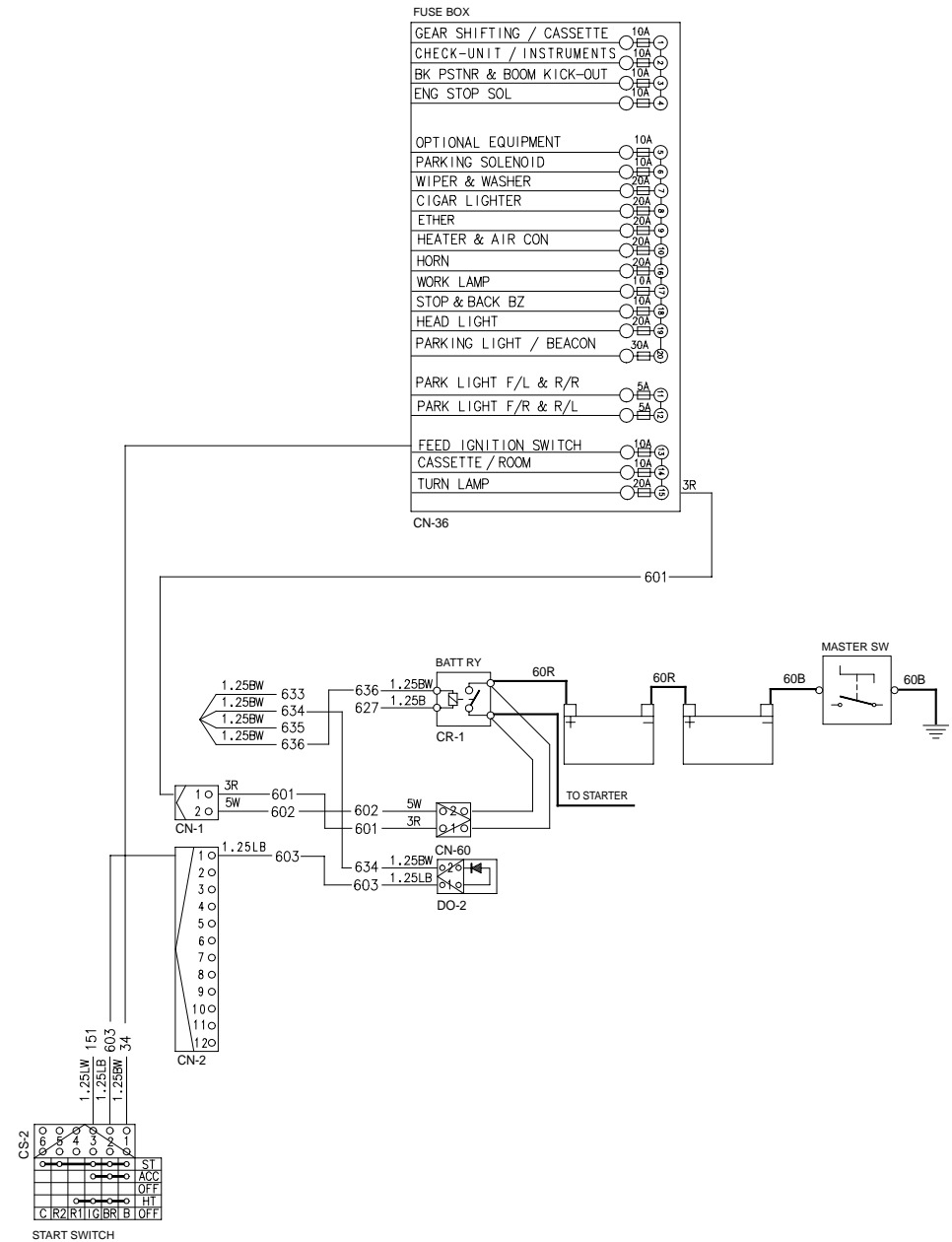
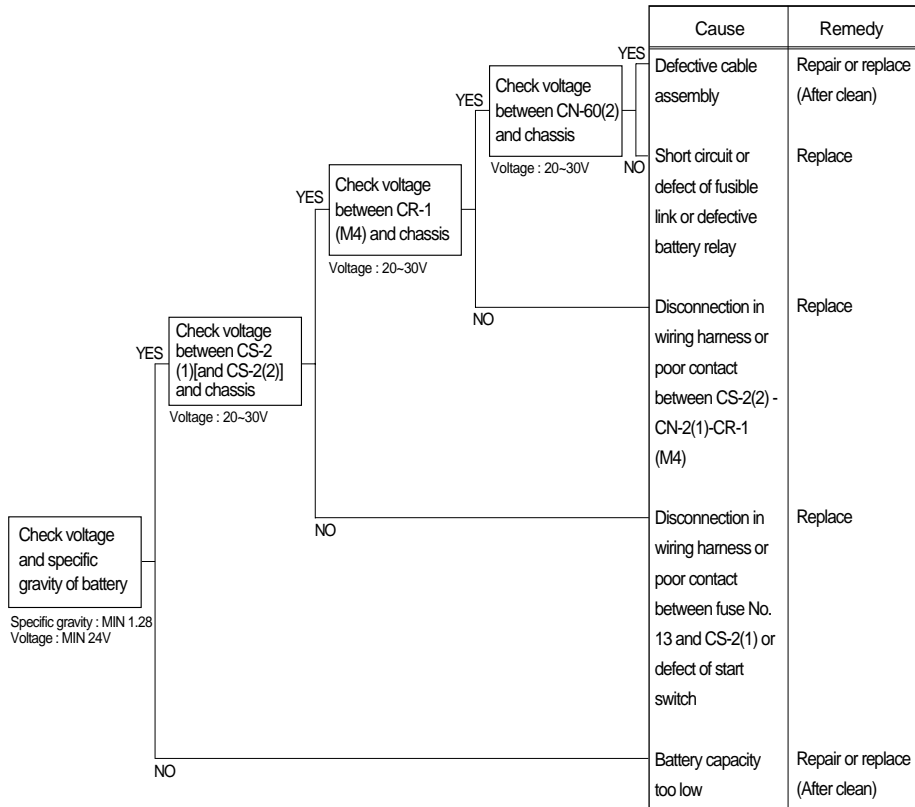
### 15. WHEN STARTING SWITCH IS TURNED ON, WIPER MOTOR DOES NOT OPERATE

- Before carrying out below procedure, check all the related connectors are properly inserted and the fuse No.7 is not blown out.
- After checking, connect the disconnected connectors again immediately unless otherwise specified.



## 16. WHEN STARTING SWITCH ON DOES NOT OPERATE

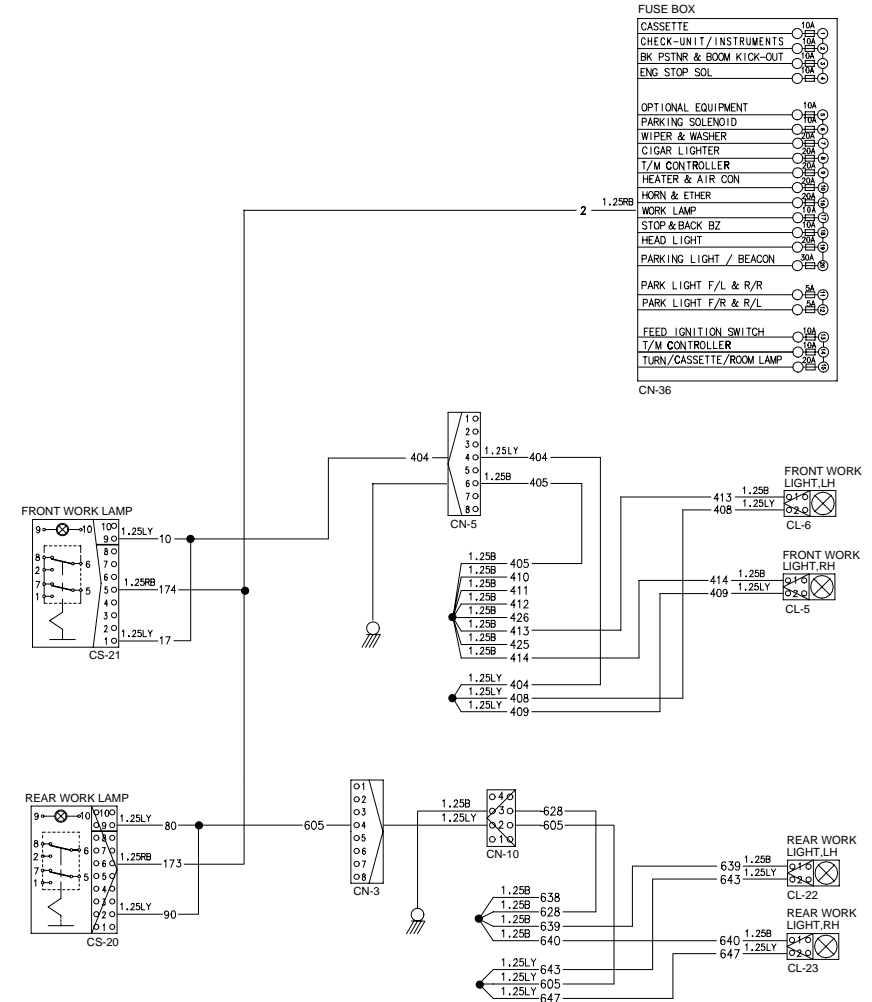
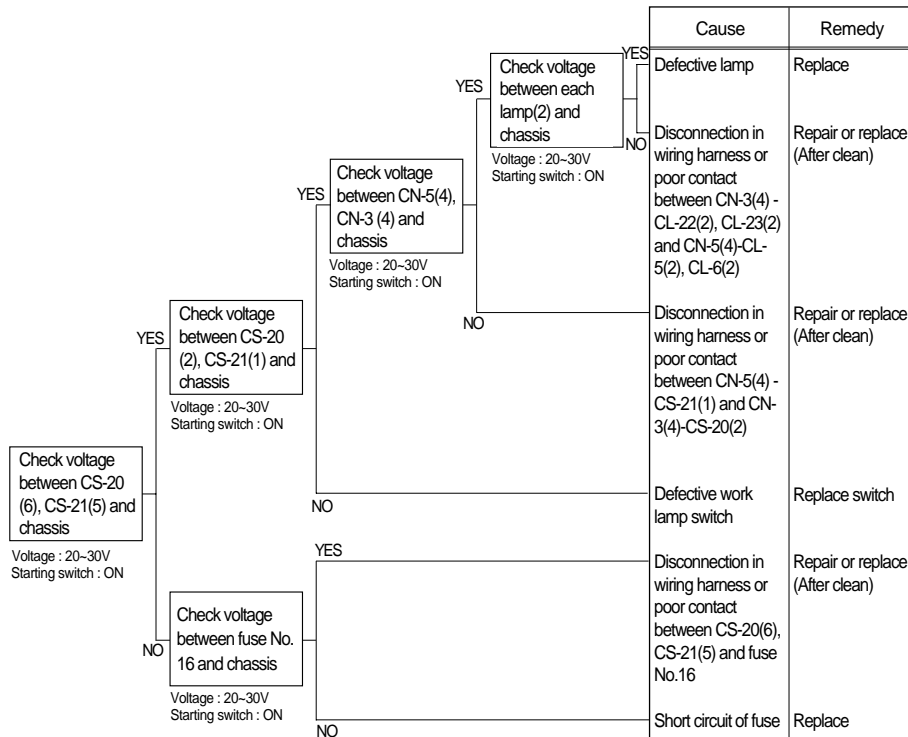
- Before carrying out below procedure, check all the related connectors are properly inserted and and the fuse No.15 is not blown out.
- After checking, connect the disconnected connectors again immediately unless otherwise specified.





## 17. WHEN STARTING SWITCH IS TURNED ON, WORK LAMP DOES NOT LIGHTS UP

- Before carrying out below procedure, check all the related connectors are properly inserted, and the fuse No.16 is not blown out.
- After checking, connect the disconnected connectors again immediately unless otherwise specified.



## 18. WHEN ENGINE DOES NOT START

- Check supply of the power at engine stop solenoid while starting switch is ON.
- Before carrying out below procedure, check all the related connectors are properly inserted.
- After checking, connect the disconnected connectors again immediately unless other wise specified.
- Check forward reverse switch at neutral position.

