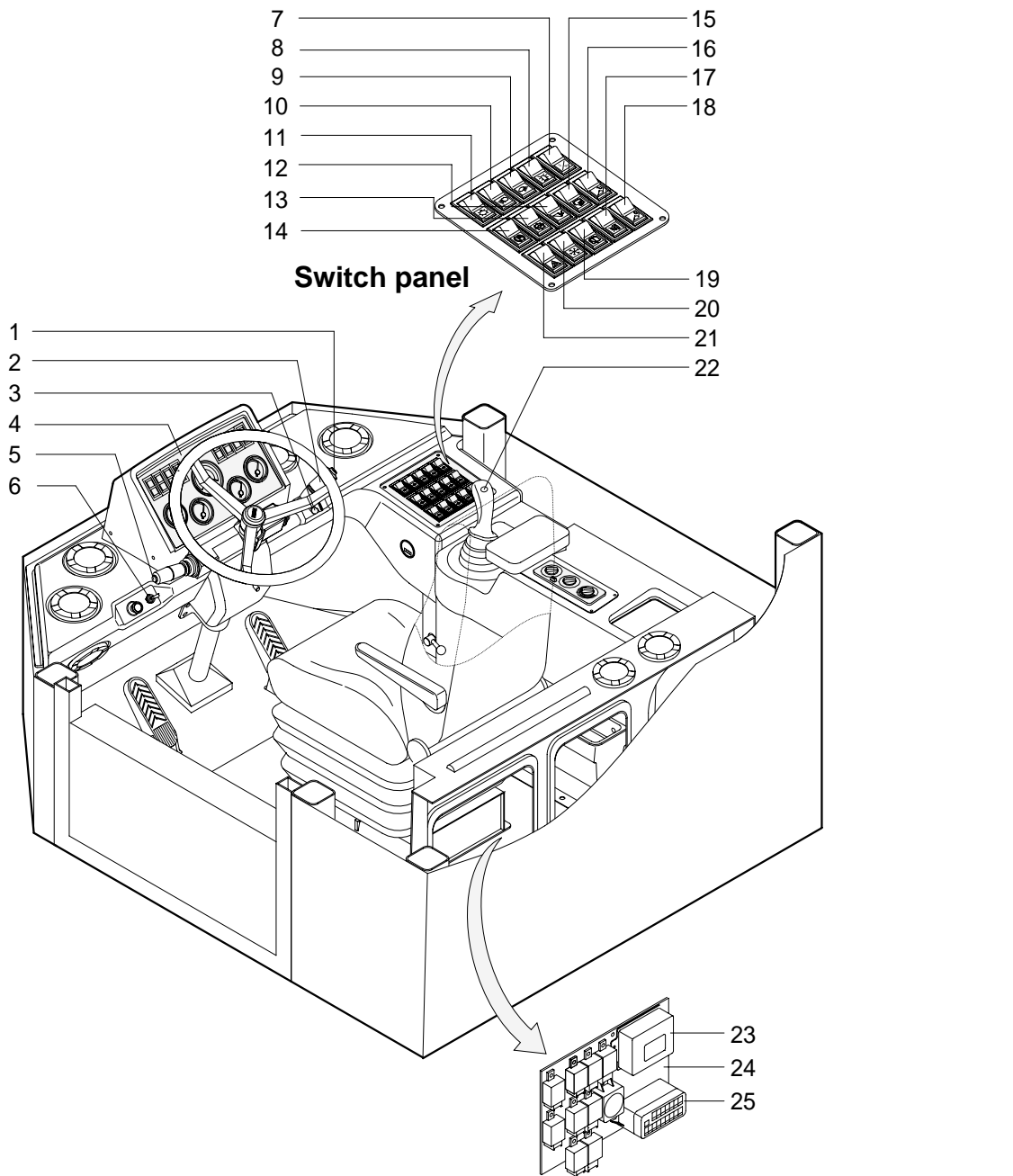


# SECTION 7 ELECTRICAL SYSTEM

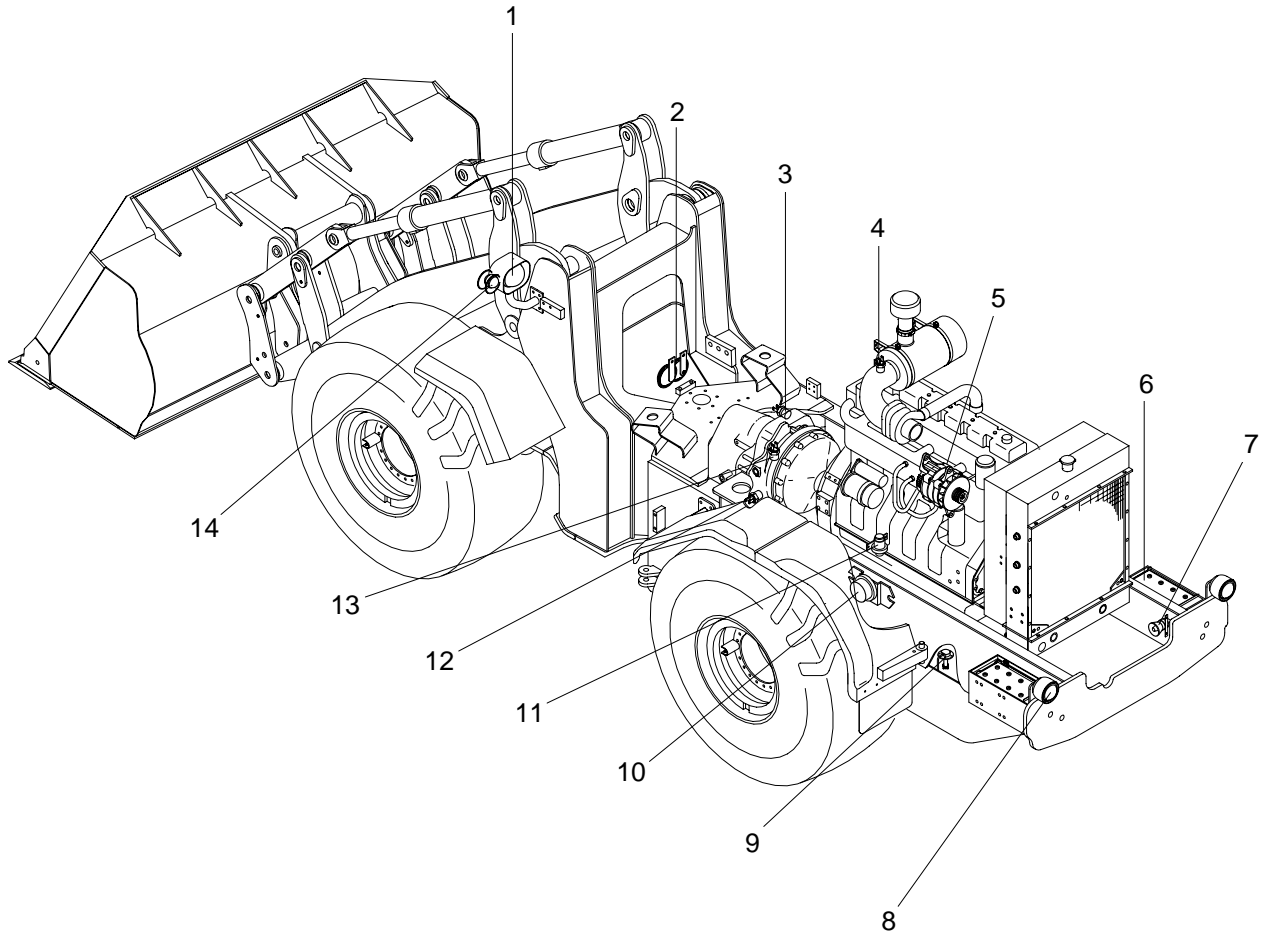
## GROUP 1 COMPONENT LOCATION

### 1. LOCATION 1



- |   |                         |    |                               |    |                          |
|---|-------------------------|----|-------------------------------|----|--------------------------|
| 1 | Horn button             | 10 | Front work lamp switch        | 19 | Rear wiper/washer switch |
| 2 | Multi function switch   | 11 | Main light switch             | 20 | Aircon switch            |
| 3 | Starting switch         | 12 | Ride control switch(Optional) | 21 | Hazard switch            |
| 4 | Cluster                 | 13 | Clutch cut off switch         | 22 | Kick down switch         |
| 5 | Kick down switch        | 14 | Parking brake switch          | 23 | Check unit               |
| 6 | Override switch         | 15 | Cold start switch(Optional)   | 24 | Relay board              |
| 7 | Prolix switch           | 16 | Attachment disengage switch   | 25 | Fuse box                 |
| 8 | Beacon switch(Optional) | 17 | Buzzer stop switch            |    |                          |
| 9 | Rear work lamp switch   | 18 | Attachment engage switch      |    |                          |

## 2. LOCATION 2



- |   |                            |    |                      |    |                            |
|---|----------------------------|----|----------------------|----|----------------------------|
| 1 | Head lamp                  | 6  | Battery              | 11 | Start relay                |
| 2 | Horn                       | 7  | Back up buzzer       | 12 | Brake pressure switch      |
| 3 | T/M oil temperature sender | 8  | Tail stop flash lamp | 13 | Clutch oil pressure switch |
| 4 | Air cleaner switch         | 9  | Fuel sender          | 14 | Front turn lamp            |
| 5 | Alternator                 | 10 | Battery relay        |    |                            |