

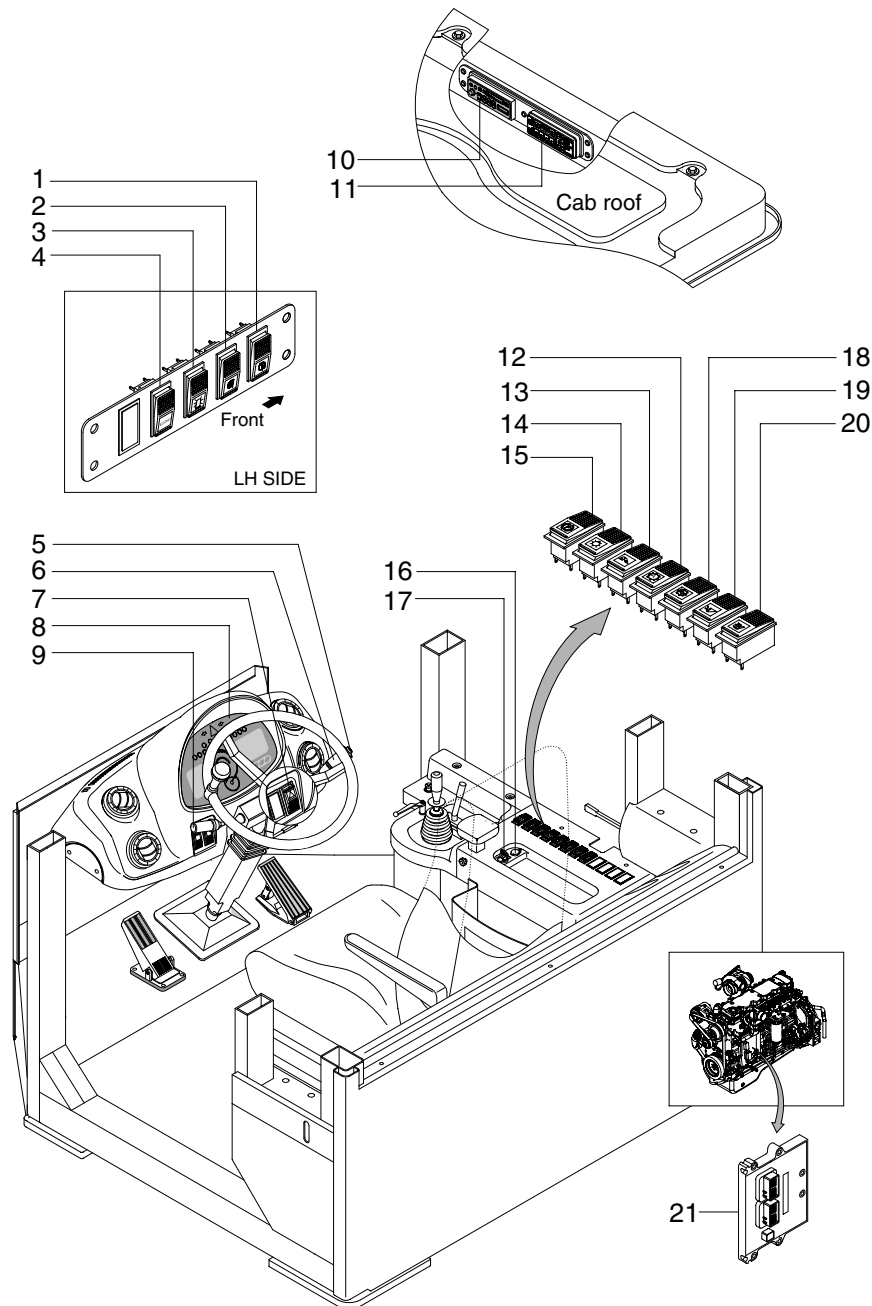
SECTION 7 ELECTRICAL SYSTEM

Group 1 Component Location	7-1
Group 2 Electrical Circuit	7-3
Group 3 Monitoring System	7-21
Group 4 Electrical Component Specification	7-40
Group 5 Connectors	7-47
Group 6 Troubleshooting	7-67

SECTION 7 ELECTRICAL SYSTEM

GROUP 1 COMPONENT LOCATION

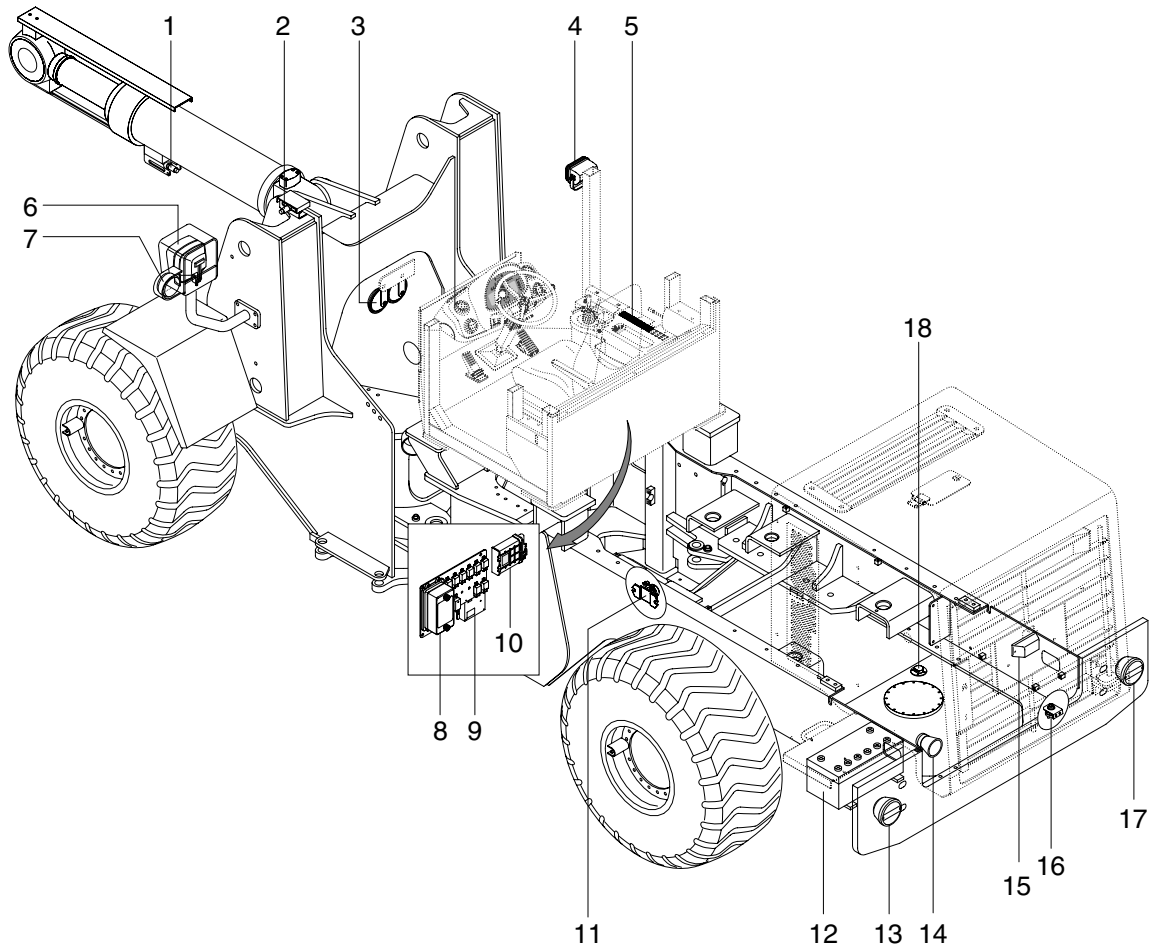
1. LOCATION 1



7407AEL02

- | | | | | | |
|---|---------------------------------|----|---|----|-------------------------------|
| 1 | Rear wiper/washer switch | 9 | Kick down switch | 16 | 12V socket |
| 2 | Mirror defrost switch(Optional) | 10 | Radio & cassette(STD)
Radio & CD player(OPT) | 17 | Starting switch |
| 3 | Beacon switch(Optional) | 11 | Aircon & heater switch | 18 | Clutch cut off switch |
| 4 | ECONO switch | 12 | Auto select switch | 19 | Ride control switch(Optional) |
| 5 | Horn button | 13 | Work lamp switch | 20 | Heated seat switch(Optional) |
| 6 | Multi function switch | 14 | Main light switch | 21 | Engine control module(ECM) |
| 7 | Hazard switch | 15 | Parking brake switch | | |
| 8 | Cluster | | | | |

2. LOCATION 2



7407EL02-1

- | | | |
|--------------------|-----------------------------------|----------------------|
| 1 Proximity switch | 7 Front turn lamp | 13 Rear combi lamp |
| 2 Proximity switch | 8 Fuse box | 14 Back up buzzer |
| 3 Horn | 9 Machine control unit(MCU) | 15 Number plate lamp |
| 4 Work lamp | 10 Transmission control unit(TCU) | 16 Master switch |
| 5 Switch | 11 Start relay | 17 Rear combi lamp |
| 6 Head lamp | 12 Battery | 18 Fuel sender |