

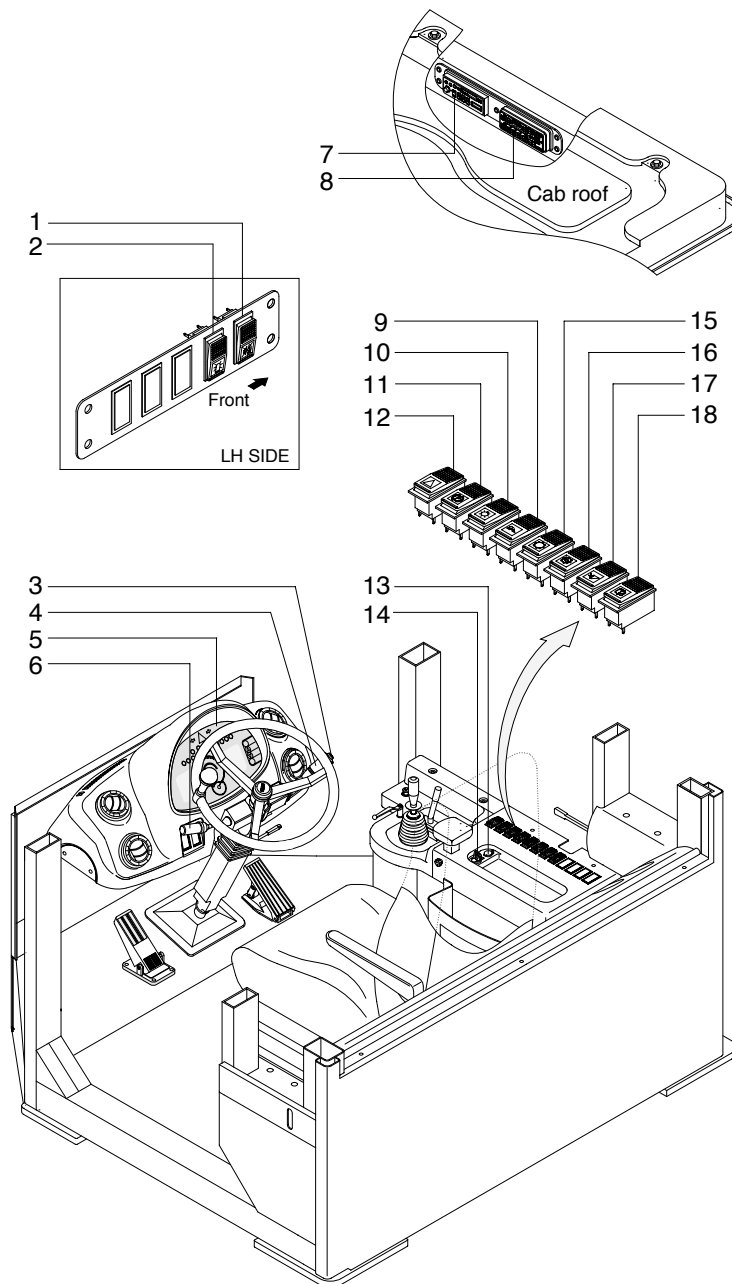
SECTION 7 ELECTRICAL SYSTEM

Group 1 Component Location	7-1
Group 2 Electrical Circuit	7-3
Group 3 Monitoring System	7-21
Group 4 Electrical Component Specification	7-37
Group 5 Connectors	7-44
Group 6 Troubleshooting	7-61

SECTION 7 ELECTRICAL SYSTEM

GROUP 1 COMPONENT LOCATION

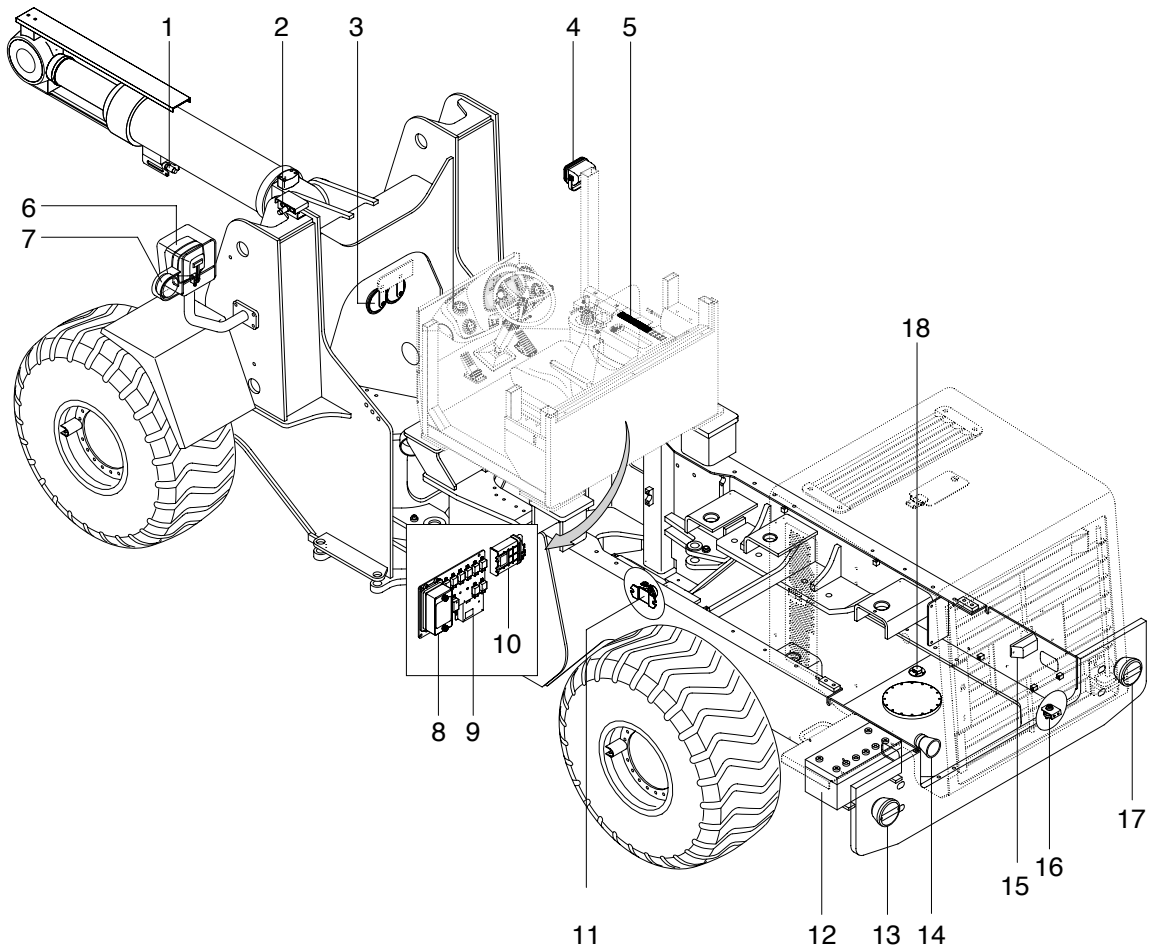
1. LOCATION 1



7407EL02

- | | | |
|-------------------------|--------------------------|--------------------------------|
| 1 Buzzer stop switch | 7 Radio & cassette | 13 12V socket |
| 2 Beacon switch(option) | 8 Aircon & heater switch | 14 Starting switch |
| 3 Horn button | 9 Work lamp switch | 15 Auto select switch |
| 4 Multi function switch | 10 Main light switch | 16 Clutch cut off switch |
| 5 Cluster | 11 Parking brake switch | 17 Ride control switch(option) |
| 6 Gear selector lever | 12 Hazard switch | 18 Rear wiper/washer switch |

2. LOCATION 2



7407EL02-1

- | | | |
|--------------------|-----------------------------------|----------------------|
| 1 Proximity switch | 7 Front turn lamp | 13 Rear combi lamp |
| 2 Proximity switch | 8 Fuse box | 14 Back up buzzer |
| 3 Horn | 9 Machine control unit(MCU) | 15 Number plate lamp |
| 4 Work lamp | 10 Transmission control unit(TCU) | 16 Master switch |
| 5 Switchs | 11 Start relay | 17 Rear combi lamp |
| 6 Head lamp | 12 Battery | 18 Fuel sender |