

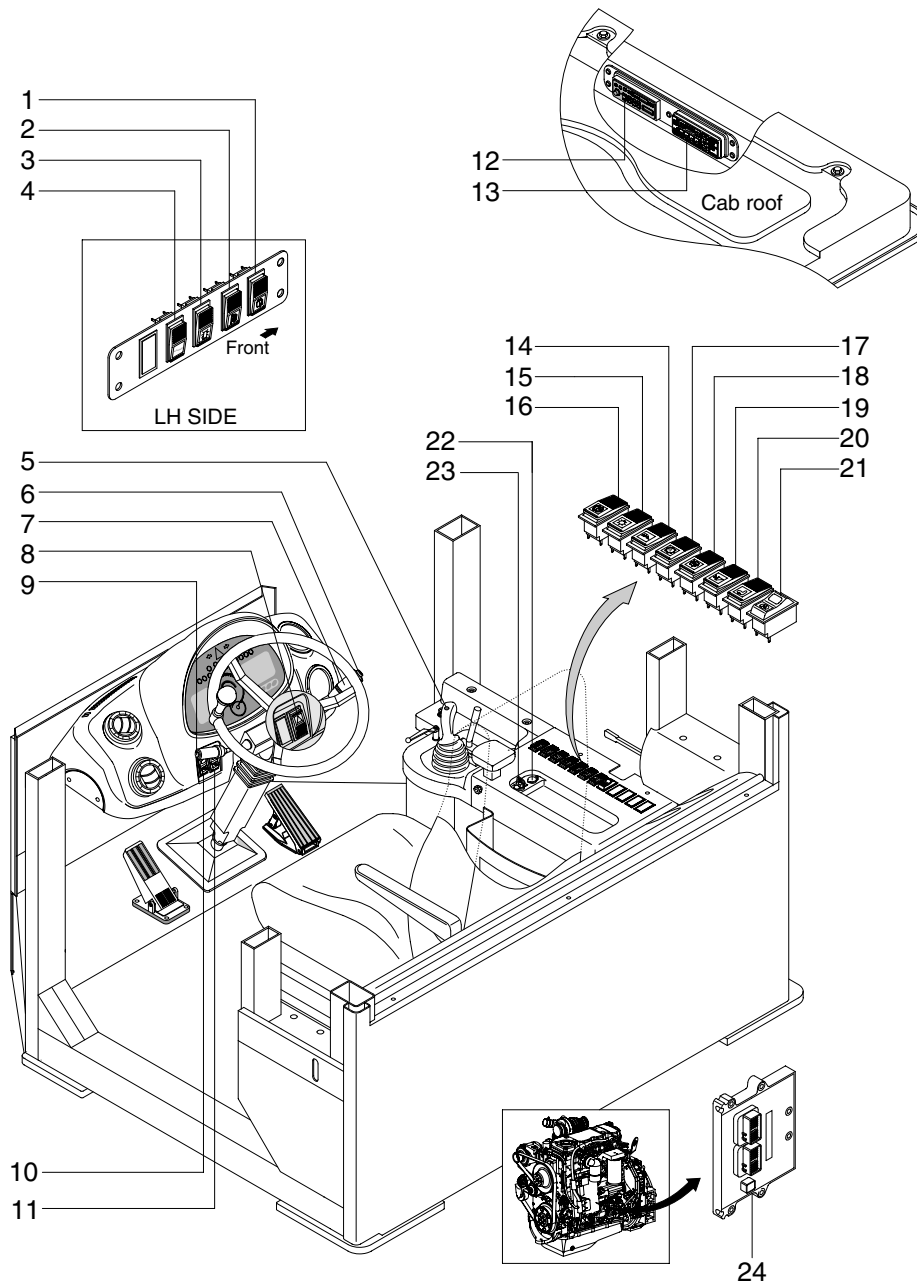
## SECTION 7 ELECTRICAL SYSTEM

Group 1 Component Location .....	7-1
Group 2 Electrical Circuit .....	7-3
Group 3 Monitoring System .....	7-21
Group 4 Electrical Component Specification .....	7-40
Group 5 Connectors .....	7-47
Group 6 Troubleshooting .....	7-67

# SECTION 7 ELECTRICAL SYSTEM

## GROUP 1 COMPONENT LOCATION

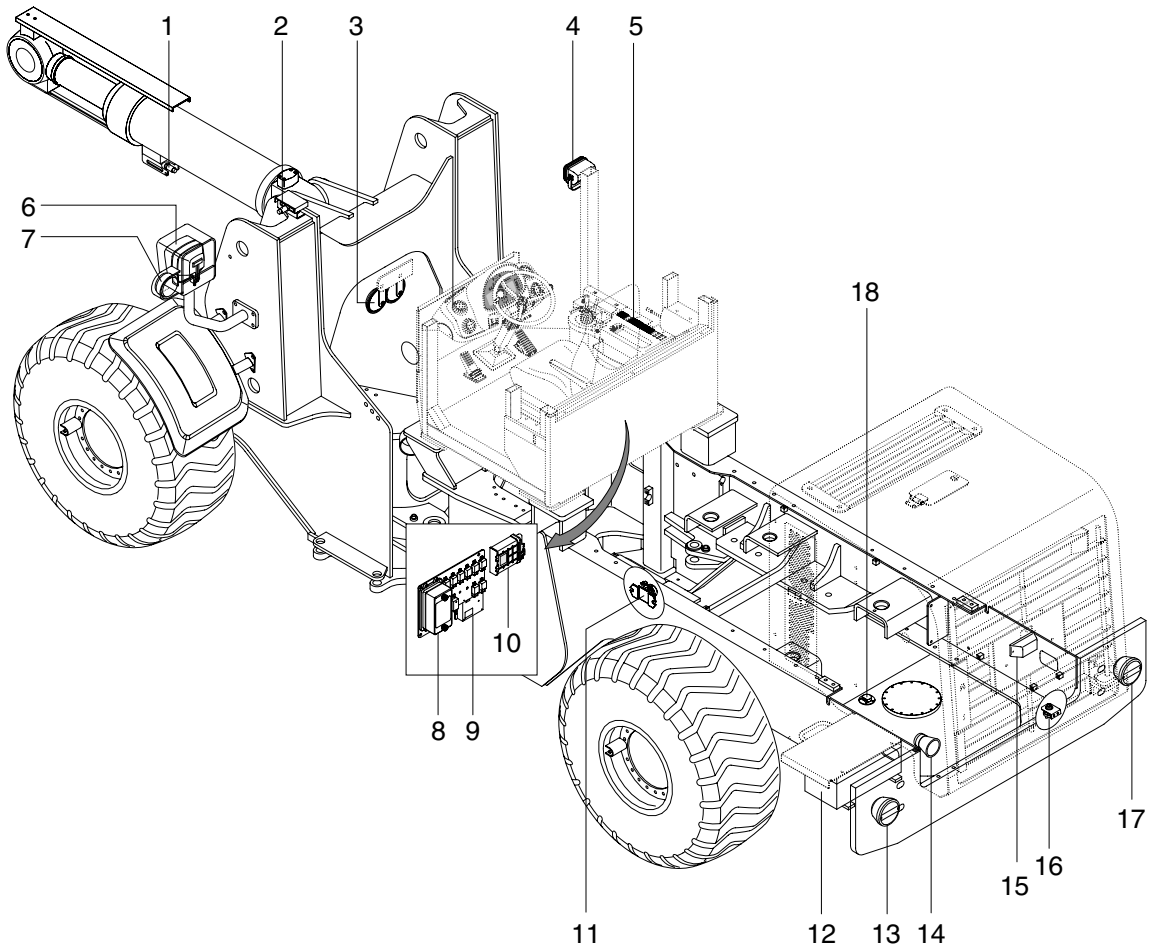
### 1. LOCATION 1



7307AEL02

- |   |                                 |    |   |    |                               |
|---|---------------------------------|----|---|----|-------------------------------|
| 1 | Rear wiper/washer switch        | 10 | Attachment unlock switch                        | 18 | Clutch cut off switch         |
| 2 | Mirror defrost switch(Optional) | 11 | Attachment lock switch                          | 19 | Ride control switch(Optional) |
| 3 | Beacon switch(Optional)         | 12 | Radio & cassette(STD)<br>Radio & CD player(OPT) | 20 | Heated seat switch(Optional)  |
| 4 | ECONO switch                    | 13 | Aircon & heater switch                          | 21 | Pump motor switch(Optional)   |
| 5 | Horn button                     | 14 | Work lamp switch                                | 22 | 12V socket(Optional)          |
| 6 | Multi function switch           | 15 | Main light switch                               | 23 | Starting switch               |
| 7 | Hazard switch                   | 16 | Parking brake switch                            | 24 | Engine control module(ECM)    |
| 8 | Cluster                         | 17 | Auto select switch                              |    |                               |
| 9 | Kick down switch                |    |   |    |                               |

## 2. LOCATION 2



7307AEL02-1

- |                    |                                   |                      |
|--------------------|-----------------------------------|----------------------|
| 1 Proximity switch | 7 Front turn lamp                 | 13 Rear combi lamp   |
| 2 Proximity switch | 8 Fuse box                        | 14 Back up buzzer    |
| 3 Horn             | 9 Machine control unit(MCU)       | 15 Number plate lamp |
| 4 Work lamp        | 10 Transmission control unit(TCU) | 16 Master switch     |
| 5 Switch           | 11 Start relay                    | 17 Rear combi lamp   |
| 6 Head lamp        | 12 Battery                        | 18 Fuel sender       |