

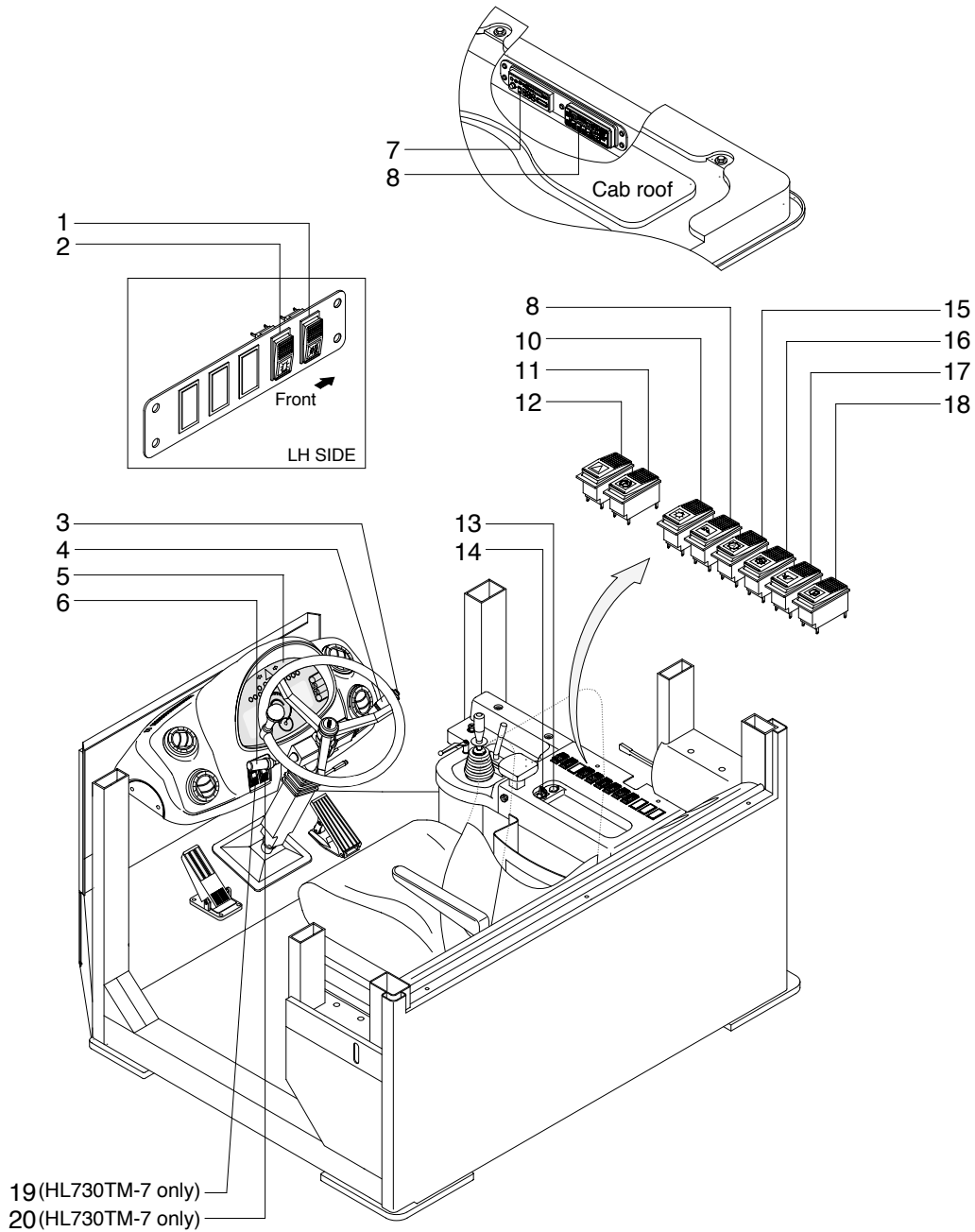
## SECTION 7 ELECTRICAL SYSTEM

Group 1 Component Location	7-1
Group 2 Electrical Circuit	7-3
Group 3 Monitoring System	7-21
Group 4 Electrical Component Specification	7-37
Group 5 Connectors	7-44
Group 6 Troubleshooting	7-61

# SECTION 7 ELECTRICAL SYSTEM

## GROUP 1 COMPONENT LOCATION

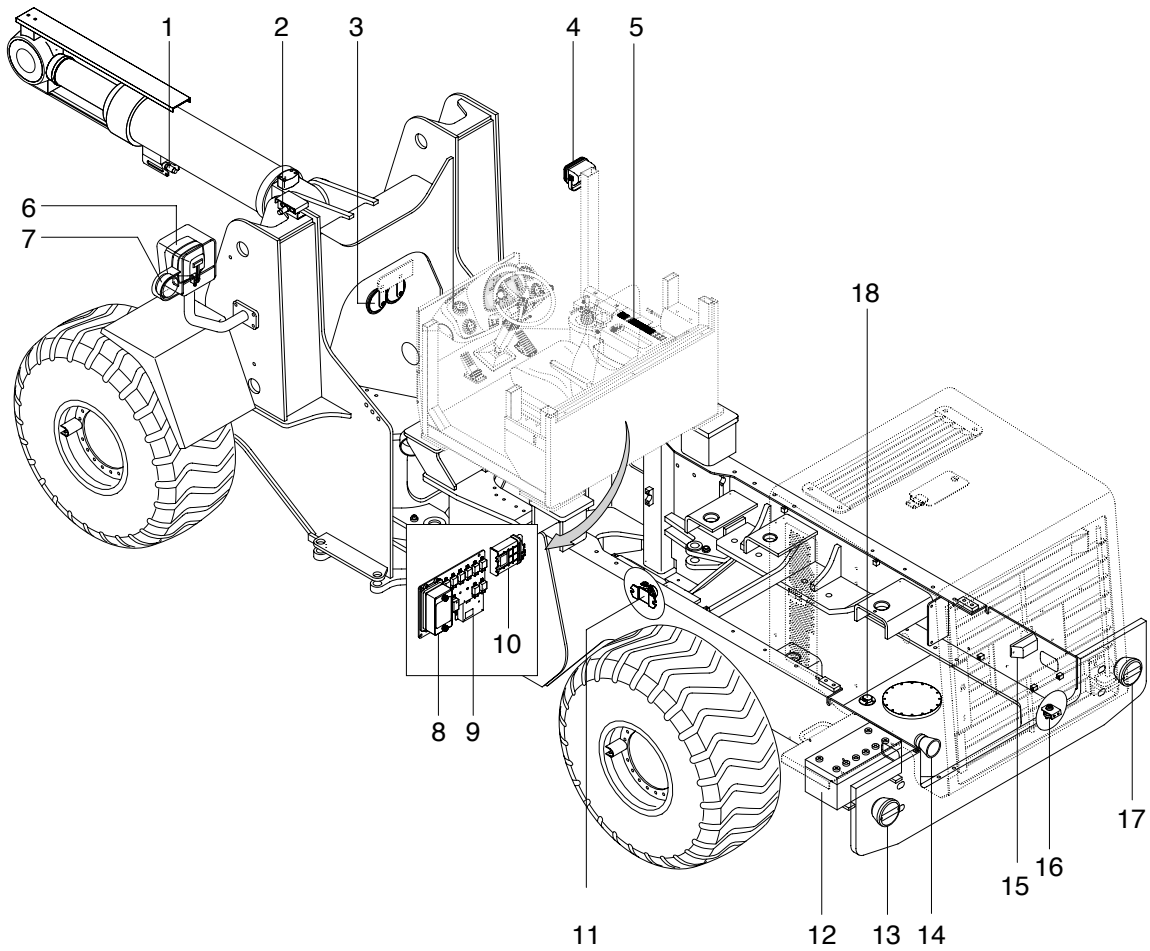
### 1. LOCATION 1



7307EL02

- |                         |                          |                                |
|-------------------------|--------------------------|--------------------------------|
| 1 Buzzer stop switch    | 8 Aircon & heater switch | 15 Auto select switch          |
| 2 Beacon switch(option) | 9 Work lamp switch       | 16 Clutch cut off switch       |
| 3 Horn button           | 10 Main light switch     | 17 Ride control switch(option) |
| 4 Multi function switch | 11 Parking brake switch  | 18 Rear wiper/washer switch    |
| 5 Cluster               | 12 Hazard switch         | 19 Attachment unlock switch    |
| 6 Gear selector lever   | 13 12V socket            | 20 Attachment lock switch      |
| 7 Radio & cassette      | 14 Starting switch       |                                |

## 2. LOCATION 2



7307EL02-1

- |                    |                                   |                      |
|--------------------|-----------------------------------|----------------------|
| 1 Proximity switch | 7 Front turn lamp                 | 13 Rear combi lamp   |
| 2 Proximity switch | 8 Fuse box                        | 14 Back up buzzer    |
| 3 Horn             | 9 Machine control unit(MCU)       | 15 Number plate lamp |
| 4 Work lamp        | 10 Transmission control unit(TCU) | 16 Master switch     |
| 5 Switchs          | 11 Start relay                    | 17 Rear combi lamp   |
| 6 Head lamp        | 12 Battery                        | 18 Fuel sender       |