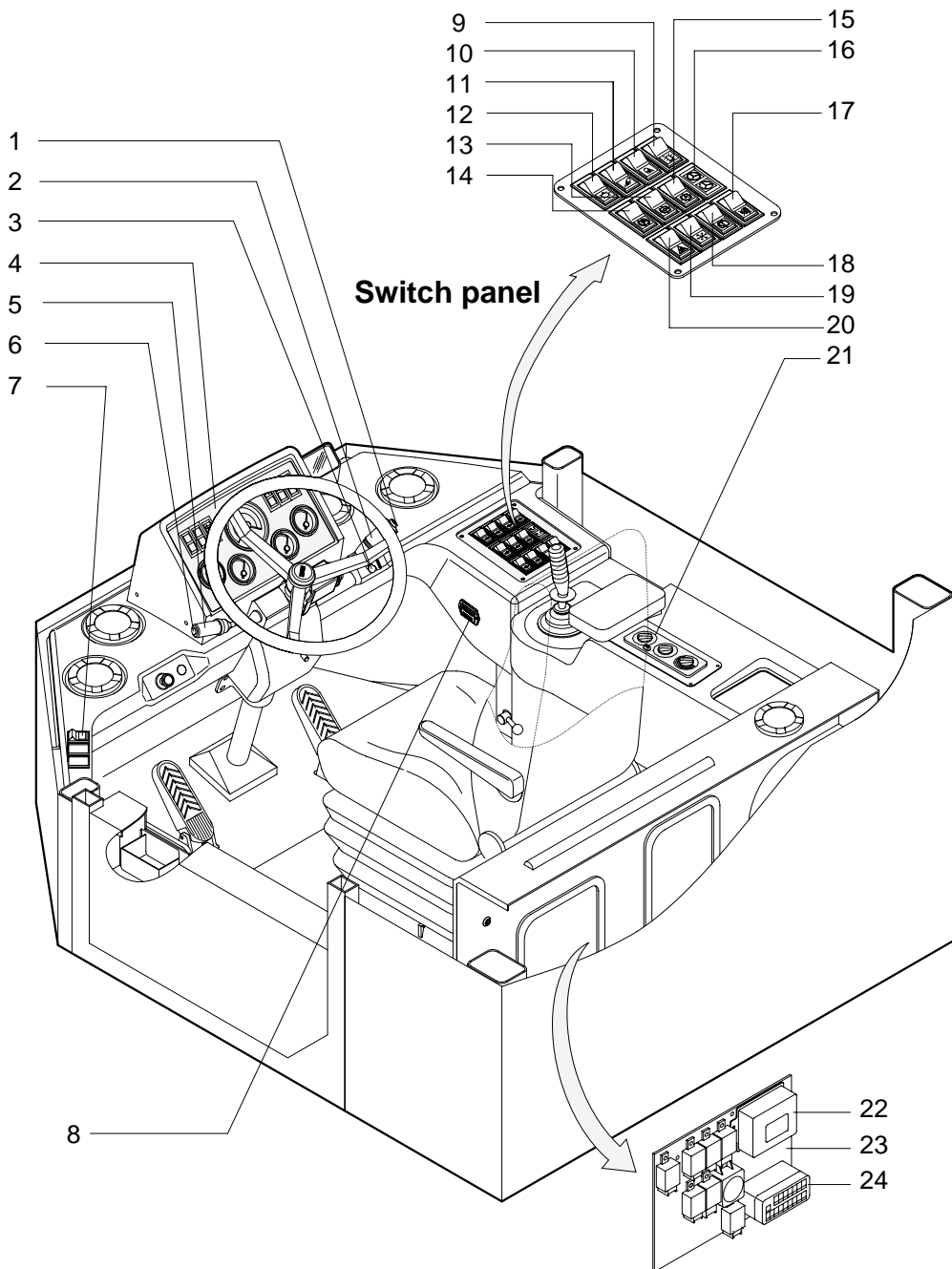


SECTION 7 ELECTRICAL SYSTEM

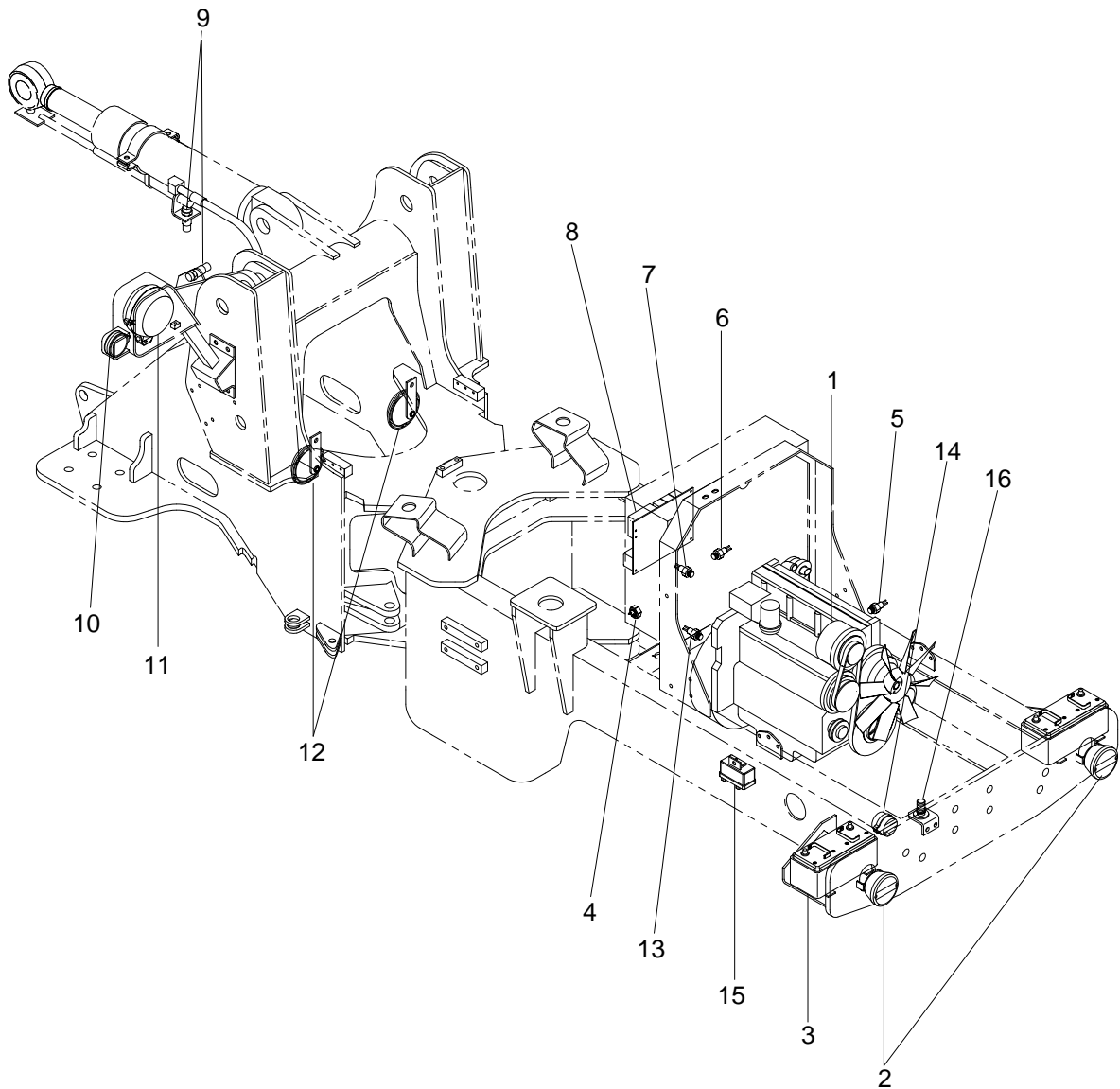
GROUP 1 COMPONENT LOCATION

1. LOCATION 1



- | | | | | | |
|---|-------------------------------|----|--|----|--------------------------|
| 1 | Horn button | 10 | Work lamp switch | 18 | Rear wiper/washer switch |
| 2 | Multi function switch | 11 | Work lamp switch | 19 | Air conditioner switch |
| 3 | Starting switch | 12 | Main light switch | 20 | Hazard switch |
| 4 | Cluster | 13 | Clutch cut off switch | 21 | Aircon & heater switch |
| 5 | Gear selector lever | 14 | Parking brake switch | 22 | Check unit |
| 6 | Kick down switch | 15 | Full automatic switch | 23 | Relay board |
| 7 | Ride control switch(Optional) | 16 | Emergency steering pilot lamp (Option) | 24 | Fuse box |
| 8 | Service meter | 17 | Buzzer stop switch | | |
| 9 | Beacon switch(Optional) | | | | |

2. LOCATION 2



- | | | | | | |
|---|-----------------------|----|-------------------------|----|----------------|
| 1 | Alternator | 7 | T/M oil pressure switch | 13 | Temp sendor |
| 2 | Rear combination lamp | 8 | Relay board | 14 | Back up buzzer |
| 3 | Battery | 9 | Proximate switch | 15 | Glow timer |
| 4 | Overheat switch | 10 | Front combination lamp | 16 | Terminal |
| 5 | Water temp switch | 11 | Light | | |
| 6 | T/M temp sendor | 12 | Air horn | | |