

# HL660 Series(\*)

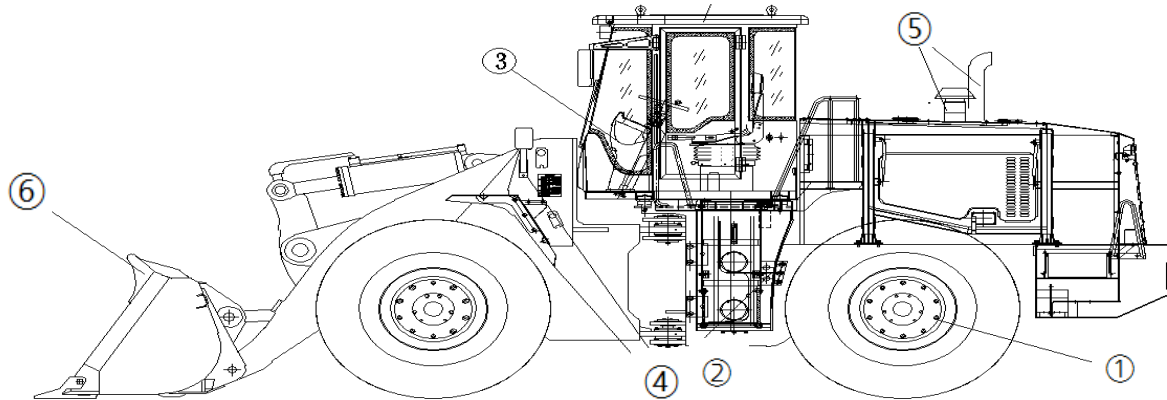
## Reassembly procedure for equipment shipped in container

\* HL660, HL660L, HL665, HL665L

2018. 09. 05.  
Hyundai Construction Equipment  
Oversea Customer Support Dept.

# Reassembly procedure

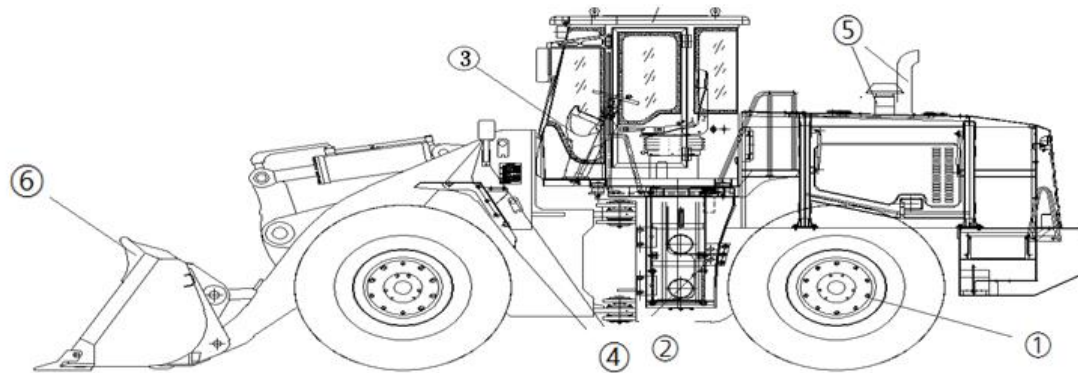
## Contents



	Reassembly procedure	Sheet	Notice
①	Axles and tire Cabin Assembly		
	1) Tires	See reference #1-1	
	2) Front and Rear axle	See reference #1-2	
	3) Drive shaft of Front and Rear axle	See reference #1-3	
	4) Pipe of Front and Rear axle	See reference #1-4	
②	Hydraulic and Fuel tank		
	1) Ladder	See reference #2-1	
	2) Handrail and related part	See reference #2-2	
	3) Hydraulic oil tank	See reference #2-3	
	4) Fuel tank	See reference #2-4	

# Reassembly procedure

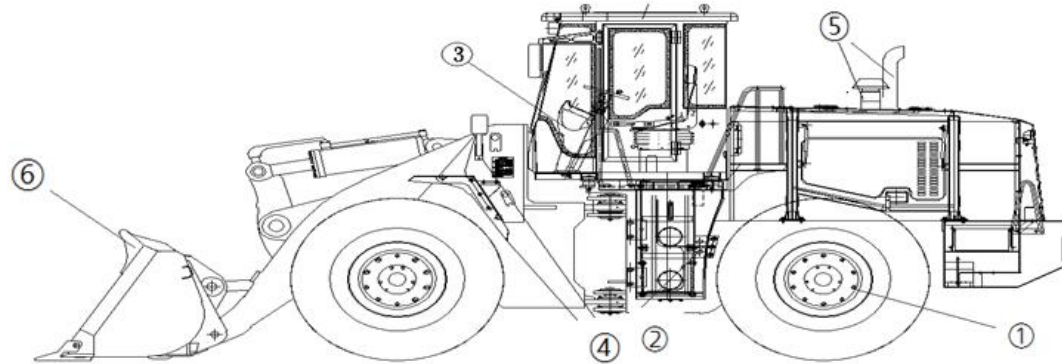
## Contents



	Reassembly procedure	Sheet	Notice
③	Cabin Assembly		
	1) Cabin Rubber Mount	See reference #3-1	
	2) Flexible shaft of RPM	See reference #3-2	
	3) Flexible shaft of control lever	See reference #3-3	
	4) Flexible shaft of transmission	See reference #3-4	
	5) Flexible shaft of parking brake	See reference #3-5	
	6) Steering Unit	See reference #3-6	
	7) Pipe of brake system	See reference #3-7	
	8) Cabin cable harness	See reference #3-8	
	9) Pipe of heater	See reference #3-9	
	10) Air conditioning system	See reference #3-10	
11) Cold start system assembly	See reference #3-11		

# Reassembly procedure

## Contents



	Reassembly procedure	Sheet	Notice
④	Coverage parts		
	1) Front fender	See reference #4-1	
	2) Combination lamp	See reference #4-2	
⑤	Tail pipe & pre-cleaner	See reference #5	
⑥	Bucket	See reference #6	
⑦	Machine test		
	1) Fill the oil	See reference #7	
	2) Machine start	See reference #7	
	3) Test	See reference #7	
	Parts in container	See reference #8	

# #1-1 Tire

Assemble



1

Remark:

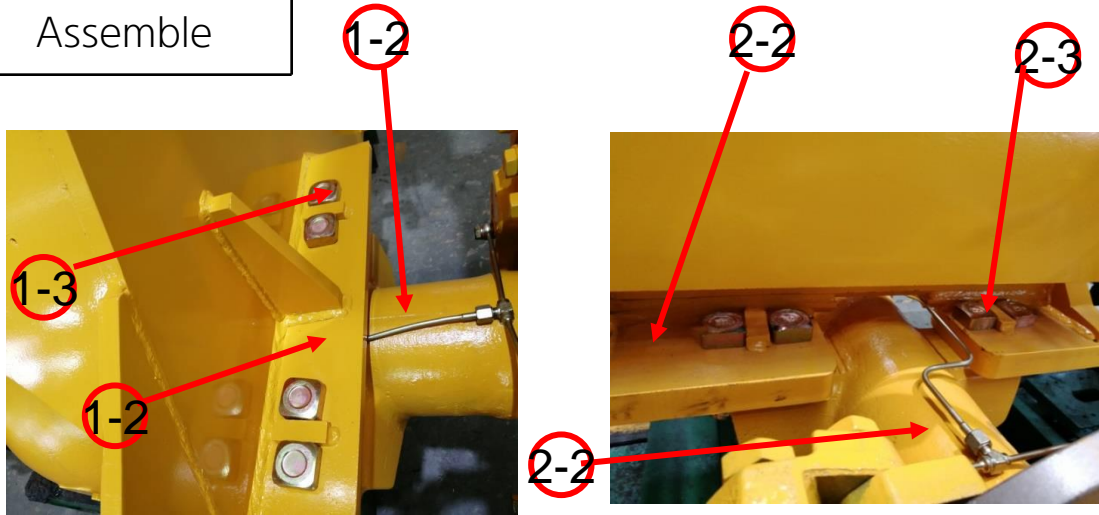
- ① Assemble tires and axles
- ② Tightening torque of rim nuts M20 : 750~800N.M

Part

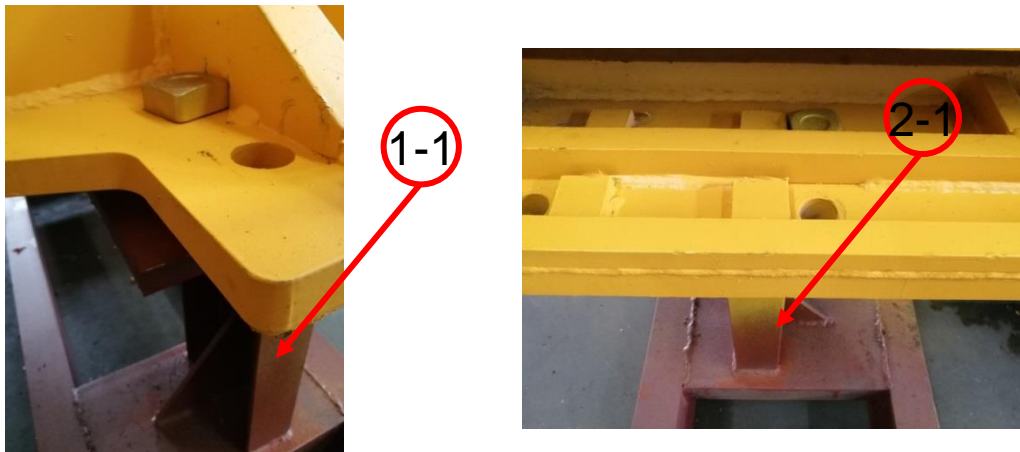


# #1-2 Front & Rear axle

Assemble



Part



Remark:

- ①  
1) Disassemble the front chassis and the holder  
2) Clean the connection between front axle and front chassis  
3) Use bolts and nuts to connect front axle and front chassis

- ②  
1) Assemble rear axle on the rear chassis  
2) Mount booster pump to the oil pipe of rear axle  
3) Assemble the brake pipe on rear axle
- ※ Refer to the attached video for more information

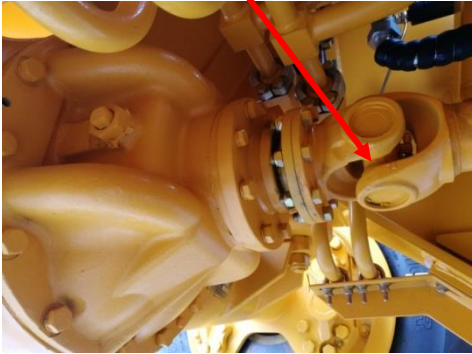


# #1-3 Drive shaft of Front & Rear axle

Assemble

Front

①



Rear

②



Remark:

- ①
- 1) Assemble front drive shaft on front axle
  - 2) Tightening torque of bolt M12 (8 pieces) : 96~147N.M

- ②
- 1) Assemble rear drive shaft on rear axle
  - 2) Tightening torque of bolt M12 (8 pieces) : 96~147N.M

※ Refer to the attached video for more information

Part

Front



Rear



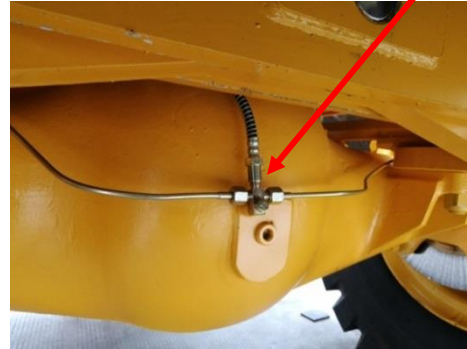
# #1-4 Pipe of Front & Rear axle

Assemble

Front



Rear



Part

Front



Rear



Remark:

- ①  
1) Assemble front axle on the front chassis  
2) Mount booster pump to the oil pipe of front axle  
3) Assemble the brake pipe on front axle

- ②  
1) Assemble rear axle on the rear chassis  
2) Mount booster pump to the oil pipe of rear axle  
3) Assemble the brake pipe on rear axle

※ Refer to the attached video for more information



# #2-1 Ladder

Assemble

②



①

③



Remark:

- ① Assemble the ladder on the hydraulic & fuel tank
- ② Tightening torque of M12 : 78~104N.M
- ③ Bolt tightening torque of M10 : 45~59N.M

Part



※ Refer to the attached video for more information

## #2-2 Handrail and related parts

Assemble

①



Part



Remark:

① Assemble the handrail and related parts above oil tank, make sure the right direction.

Tightening torque of bolt M 10 : 45~59N.M

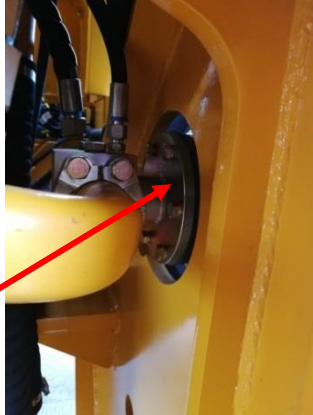
※ Refer to the attached video for more information

# #2-3 Hydraulic oil tank

Assemble



①



②



③

Remark:

① Assemble the hydraulic oil tank on the left of the chassis; Tightening torque of the bolt M16 : 195~257N.M

② Assemble returning pipe to the tank, tightening torque of bolt M10 : 45~59N.M

③ Assemble the steel pipe to the tank, tightening torque of bolt M10 : 45~59N.M

※ Refer to the attached video for more information

Part



# #2-4 Fuel tank

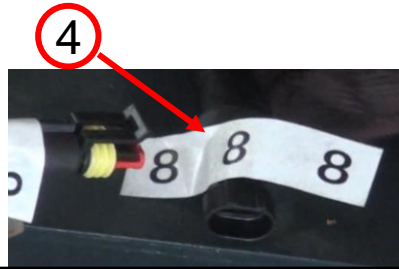
Assemble



1



3



4

2



Part



Remark:

① Assemble the fuel tank to the right side of Chassis; Tightening torque of bolt M16: 195~257N.M

② Assemble the returning pipe on the flange of oil tank.

③ Connect the sucking pipe to the oil filter

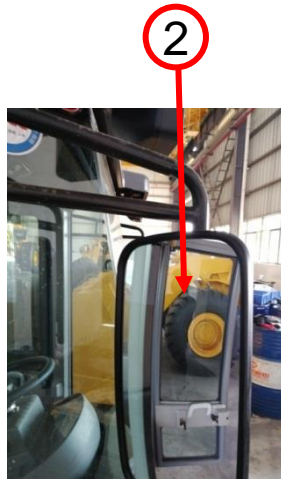
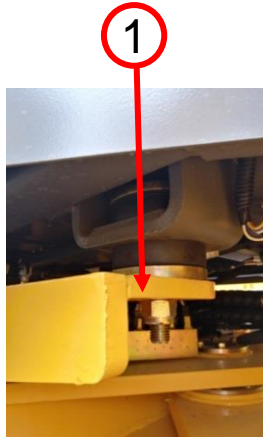
④ Connect the cable harness of fuel level sensor

※ Refer to the attached video for more information



# #3-1 Cabin Rubber Mount

## Assemble



Remark:

① Tightening torque M20 : 226~310N.M

② Assemble the rear mirror ,left and right.

## Part

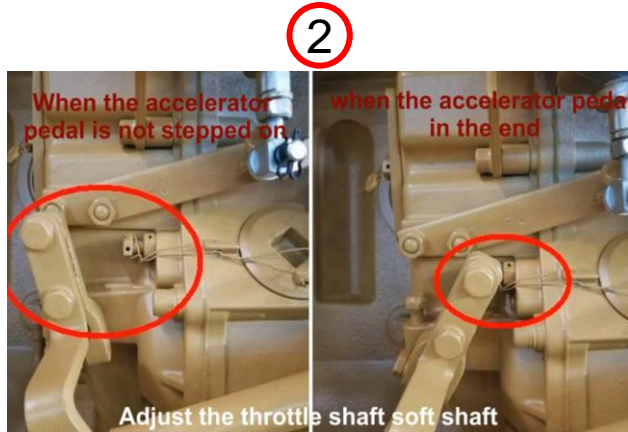
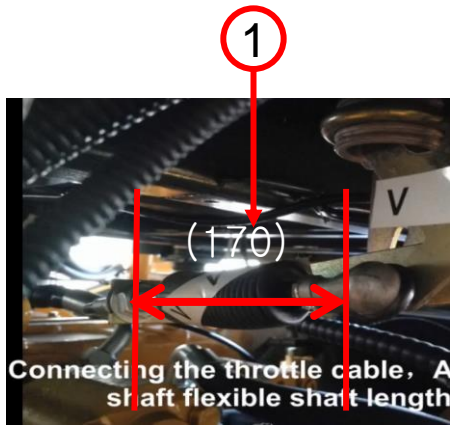


※ Refer to the attached video for more information



# #3-2 Flexible shaft of RPM

## Assemble



## Part



Remark:

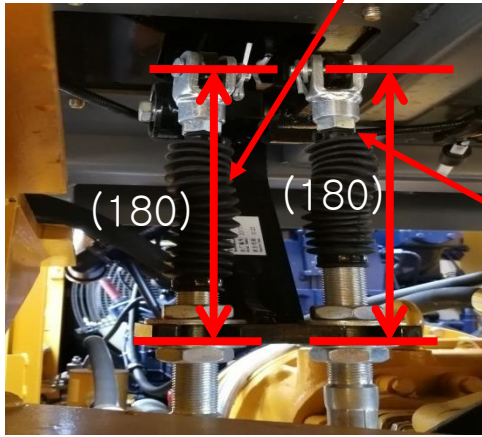
① Connecting the throttle cable, adjust the throttle shaft flexible shaft length at 170 mm

② Adjust the throttle shaft soft shaft as per accelerator status.

※ Refer to the attached video for more information

# #3-3 Flexible of control lever

Assemble



Part



Remark:

① Adjust the length of the shaft

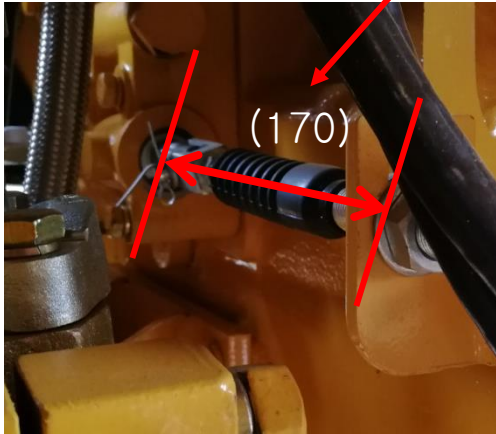
② Adjust the length of the shaft

※ Check control levers after assembling.

※ Refer to the attached video for more information

# #3-4 Flexible shaft of transmission

Assemble

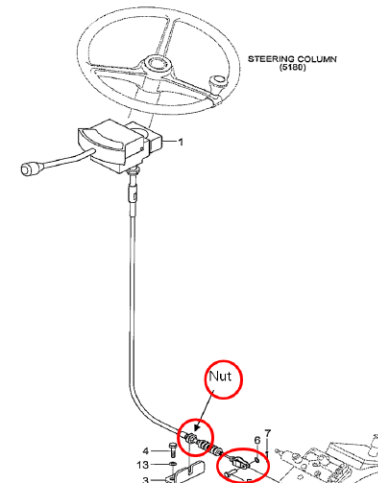


Part



Remark:

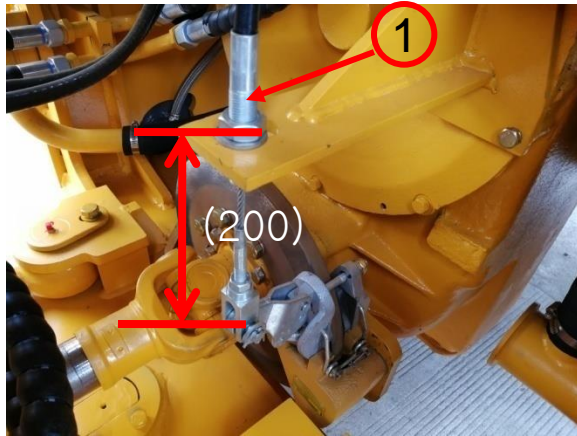
- ① Adjust the length of the flexible shaft
- ② Check the operation of control lever which built-in the steering column



※ Refer to the attached video for more information

# #3-5 Flexible of parking brake

Assemble



Remark:

① Adjust the length of the shaft

※ Check the parking brake

Part



※ Refer to the attached video for more information

# #3-6 Steering Unit

Assemble



1

Remark:

- ① The steering column assembly is assembled, and the steering gear keyway is aligned with the steering column fixing key to ensure that the alignment is in place
- ② Tightening torque of bolt M 10 : 45~59N.M

Part

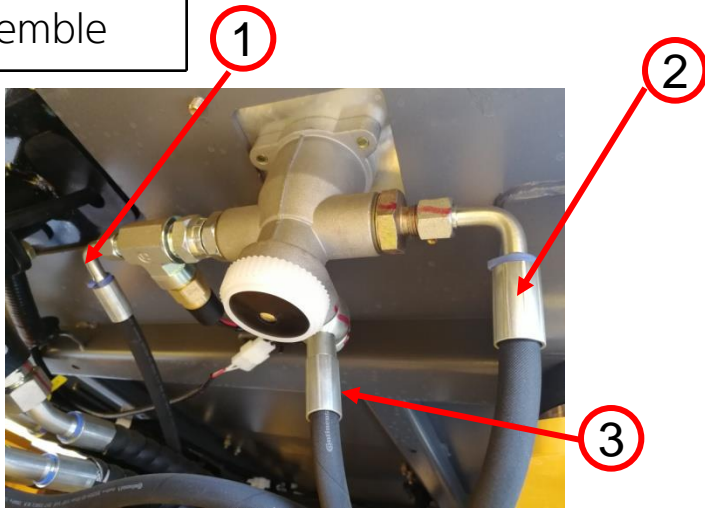


※ Refer to the attached video for more information

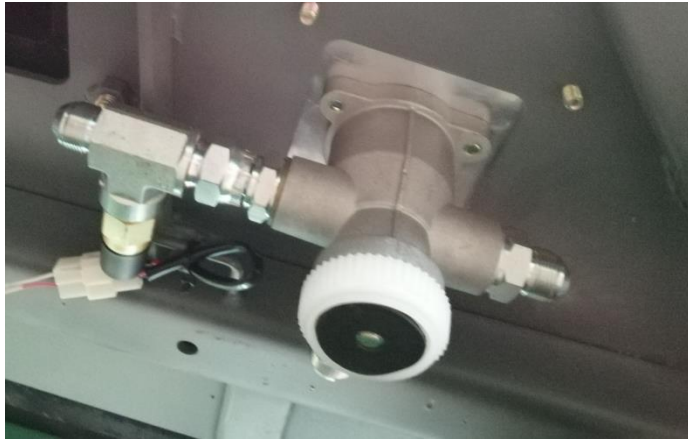


# #3-7 Pipe of brake system

Assemble



Part



Remark:

① ② ③ Connect the pipes

※ Check the leakage of the pipe

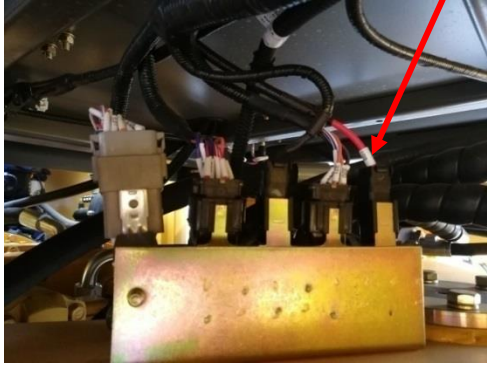
※ The way to check the brake system is that pushing the accelerator pedal and brake pedal to the end and the machine still not moving forward.

※ Refer to the attached video for more information

# #3-8 Cabin cable harness

Assemble

①



②



Remark:

- ① Connect the cable harnesses of cabin
- ② Connect the cable harnesses of accelerate pedal

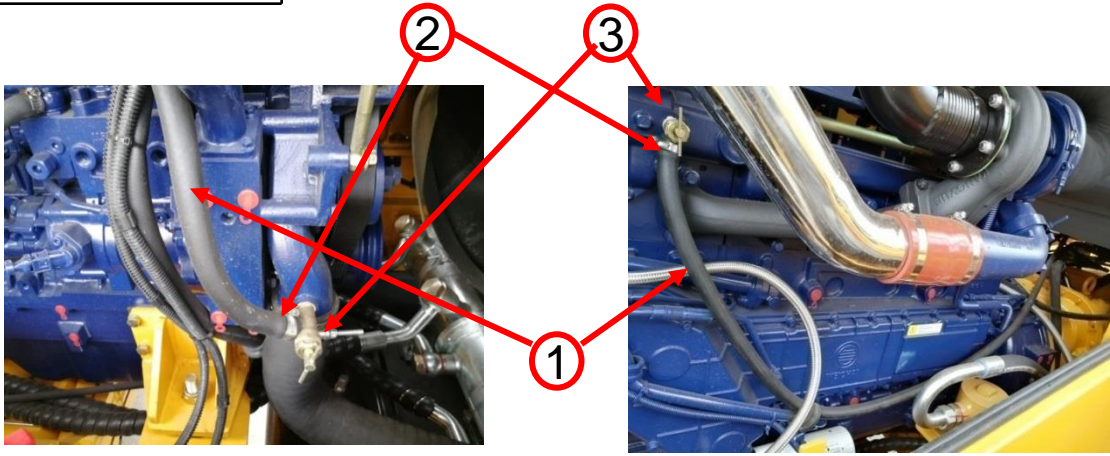
Part



※ Refer to the attached video for more information

# #3-9 Pipe of heater

Assemble



Remark:

- ① Connect the pipe of heater
- ② Use the hose clamp
- ③ Turn the valve counterclockwise to open the valve

※ Check the leakage

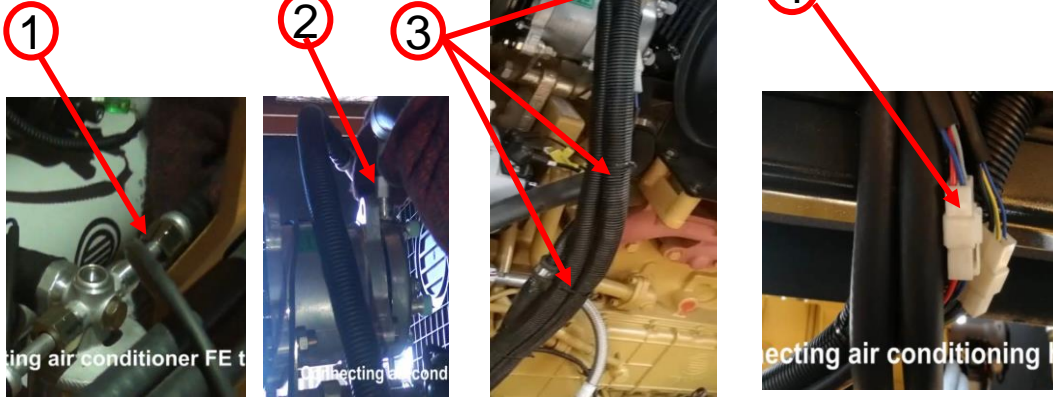
Part



※ Refer to the attached video for more information

# #3-10 Air conditioning system assembly

Assemble



Remark:

- ① Connecting air conditioner FE tube
- ② Connecting air conditioning EK tube
- ③ Bundle the harness line with a cable tie
- ④ Connecting air conditioning harness

Part

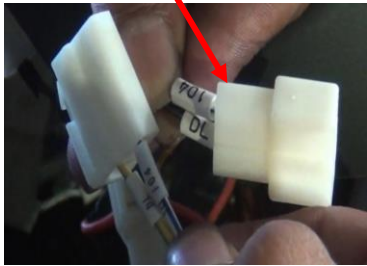
※ Refer to the attached video for more information



# #3-11 Cold start system assembly

Assemble

①



②



③



Remark:

- ① Connecting flame preheater harness
- ② Install the igniter,
- ③ cover the instrument panel and tighten with screws

Part



※ Refer to the attached video for more information



# #4-1 Fenders

Assemble



①

②

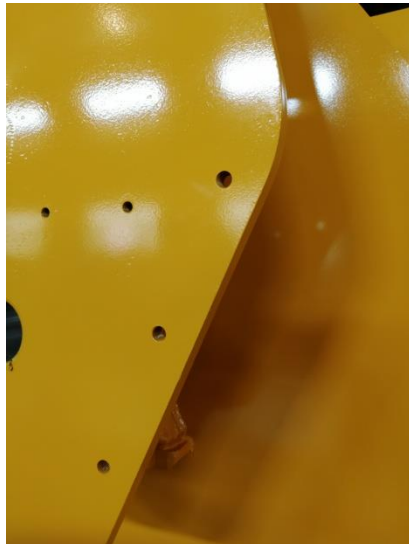
③



Remark:

- ① Assemble front fender
- ② Bolt tightening torque  
M12 : 78~104N.M
- ③ Bolt tightening torque  
M16 : 195~257N.M

Part



※ Refer to the attached video for more information

# #4-2 Front combination lamp

Assemble



Part



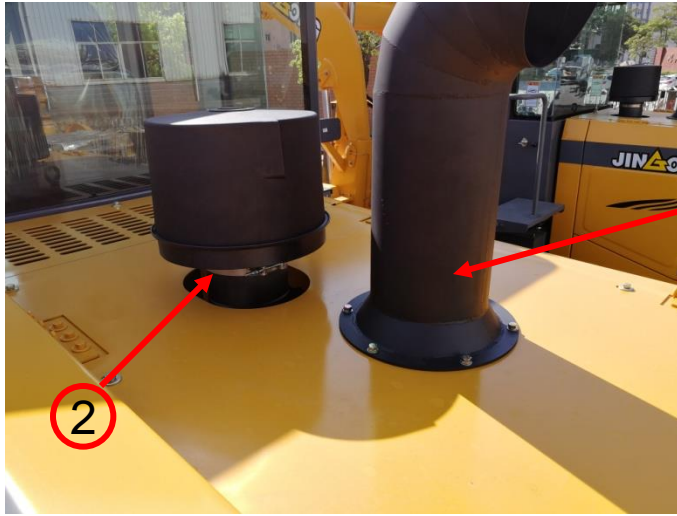
Remark:

① Assemble the supporter  
of the front lamp  
Tightening torque of bolt M  
12 : 78~104N.M

※ Refer to the attached video  
for more information

# #5 Tail pipe and pre-cleaner

Assemble



Remark:

① Clamping muffler and tail pipe (#1), make sure the head of the exhaust gas towards to the rear direction.

② Assemble the pre-cleaner

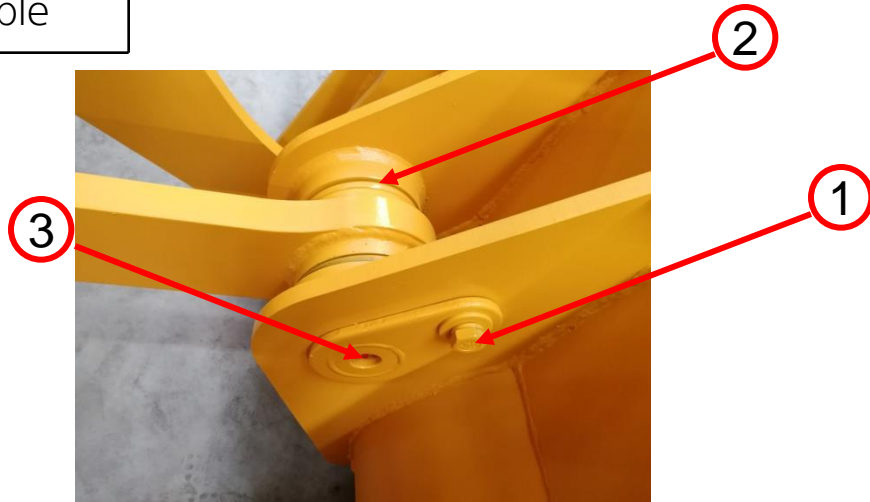
Part



※ Refer to the attached video for more information

# #6 Bucket Assy

Assemble



Remark:

① 1.Bolt (#1) tightening torque M20:376~502N.M

② 2.O- ring assemble (#2)

③After finish, put grease in to the nipple (#3) on the link

Part



※ Refer to the attached video for more information

# #7 Test

① After the whole machine is installed, add diesel oil, hydraulic oil, engine oil, transmission oil, water or antifreeze according to the local ambient temperatures

② Machine start procedure



1) Remove the parking link



2) Turn on the power Switch



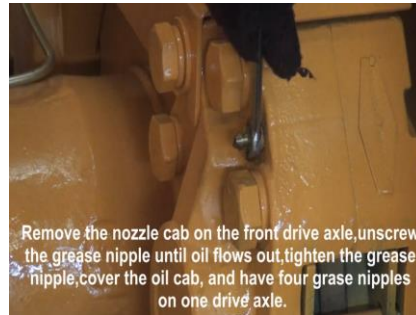
3) Start the machine



4) Open the front frame cover, remove the booster pump cover



5) Unscrew the upper pump coupling



6) Remove the nozzle cap on the front drive axle, unscrew the grease nipple until oil flows out, tighten the grease nipple, cover the oil cap, and have four grease nipples on drive axle.



remove the nozzle cap on the front drive axle, unscrew the grease nipple until oil flows out, tighten the grease nipple, cover the oil cap, and have four grease nipples on one drive axle.



7) Using the same method for exhausting the rear axle brake system



# #7 Test

## ③ Machine check procedure



1) Repeat the boom lift



2) Repeat the bucket loading and unloading



3) Repeat the left and right steering



4) Repeat the forward and reverse back breaking action several times



5) Check each lamp appliance in order to work normally



# #8 Parts in container

