

HL630 Series(*)

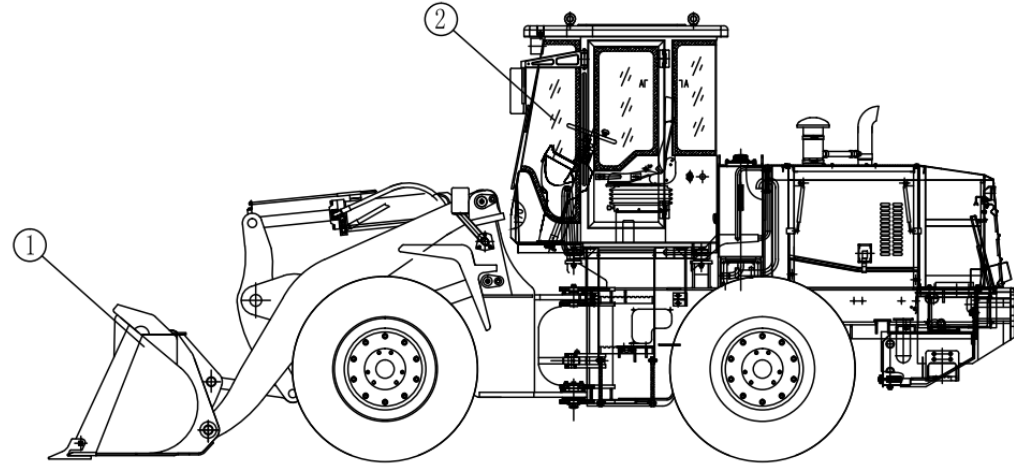
Reassembly procedure for equipment shipped in container

* HL630, HL630L, HL635, HL635L

2018. 09. 05.
Hyundai Construction Equipment
Oversea Customer Support Dept.

Reassembly procedure

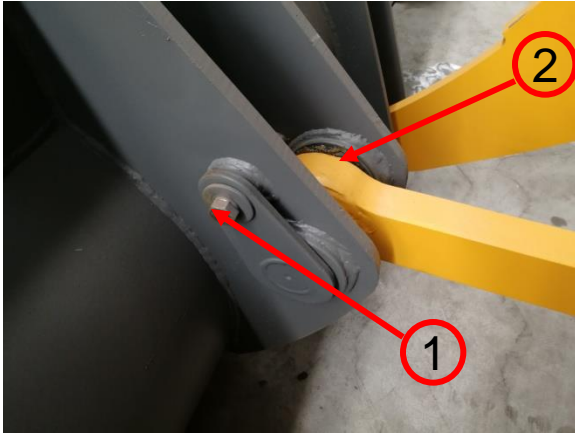
1. Contents



	Reassembly procedure	Sheet	Notice
①	Bucket Assembly	See reference #1	
②	Cabin Assembly		
	1) Rear mirror	See reference #2-1	
	2) Cabin cable	See reference #2-2	
	3) Cabin	See reference #2-3	
	Parts in container	See reference #3-1.2	

#1 Bucket Assy

Assemble



Remark:

- ① Bolt Tightening
Torque M20:376~502N.M
- ② Shim adjusting and
assemble O-ring
- ③ After assembly,
put some grease
to the nipple

Part



#2-1 Rear Mirror

Assemble



Remark:

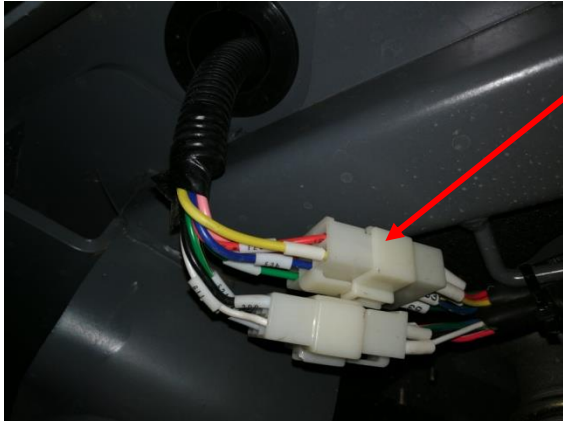
- ① Assemble left and right mirror

Part



#2-2 Cabin Cable

Assemble



Remark:

- ① Connect connecting cable and check that connector is not easily disconnected.

Part



#2-3 Cabin Assy

Assemble



2



Remark:

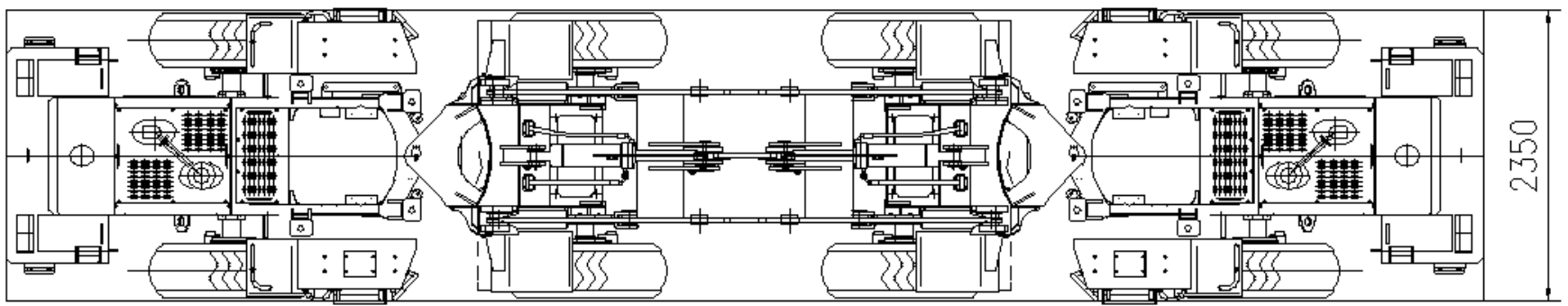
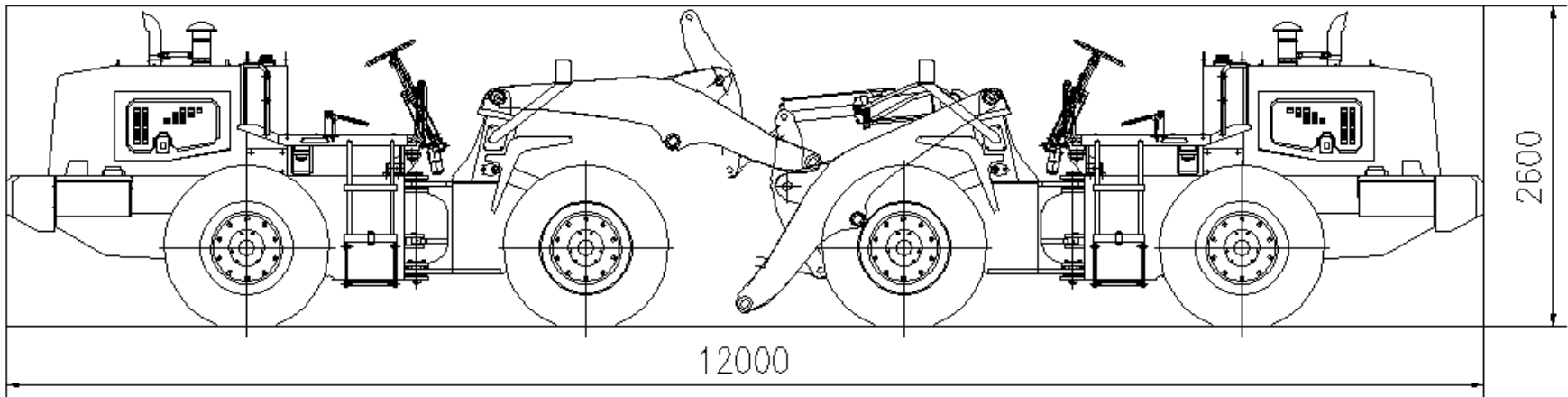
- ① Assemble the cabin assy
- ② The tightening torque of bolt M12 : 78~104 NM

Part



1

3-1 Parts in container



3-2 Parts in container

