

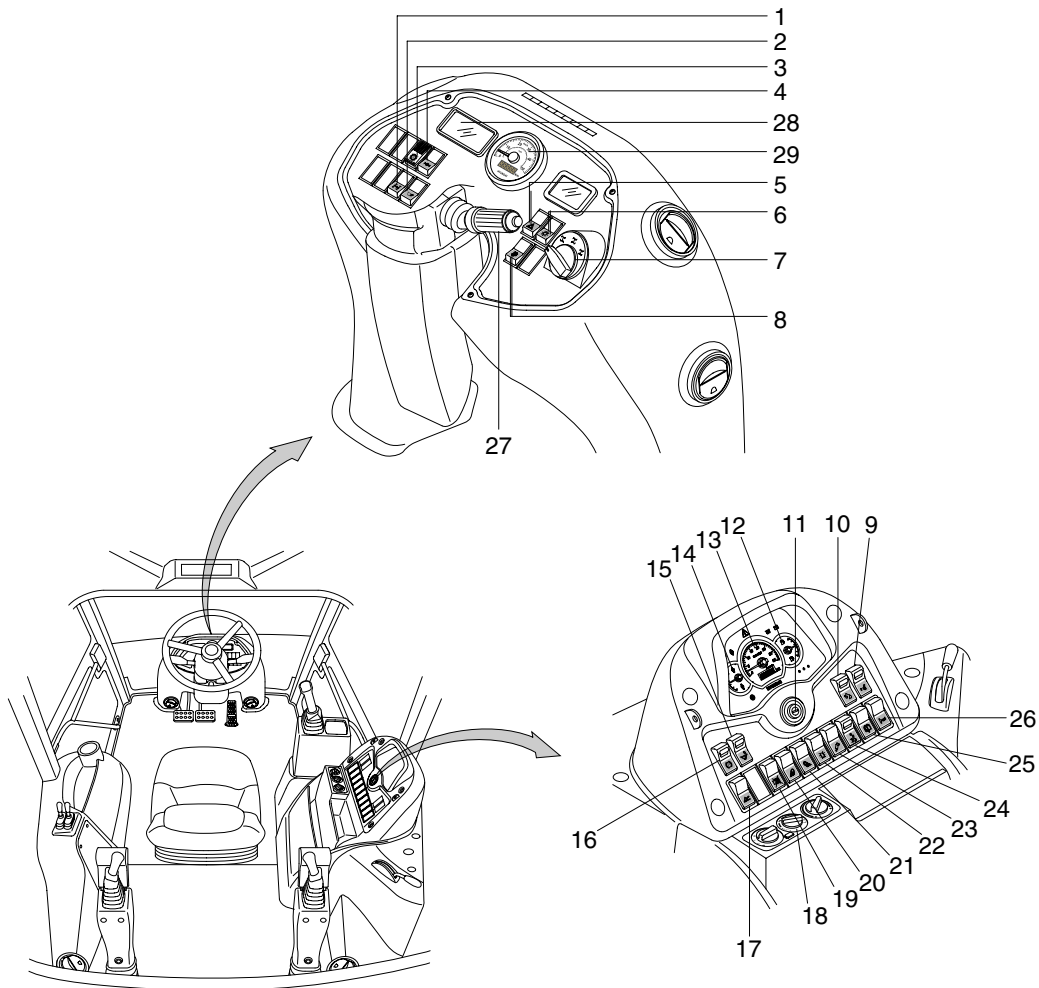
SECTION 7 ELECTRICAL SYSTEM

| | |
|--|------|
| Group 1 Component Location | 7-1 |
| Group 2 Electrical Circuit | 7-3 |
| Group 3 Electrical Component Specification | 7-24 |
| Group 4 Connectors | 7-30 |

SECTION 7 ELECTRICAL SYSTEM

GROUP 1 COMPONENT LOCATION

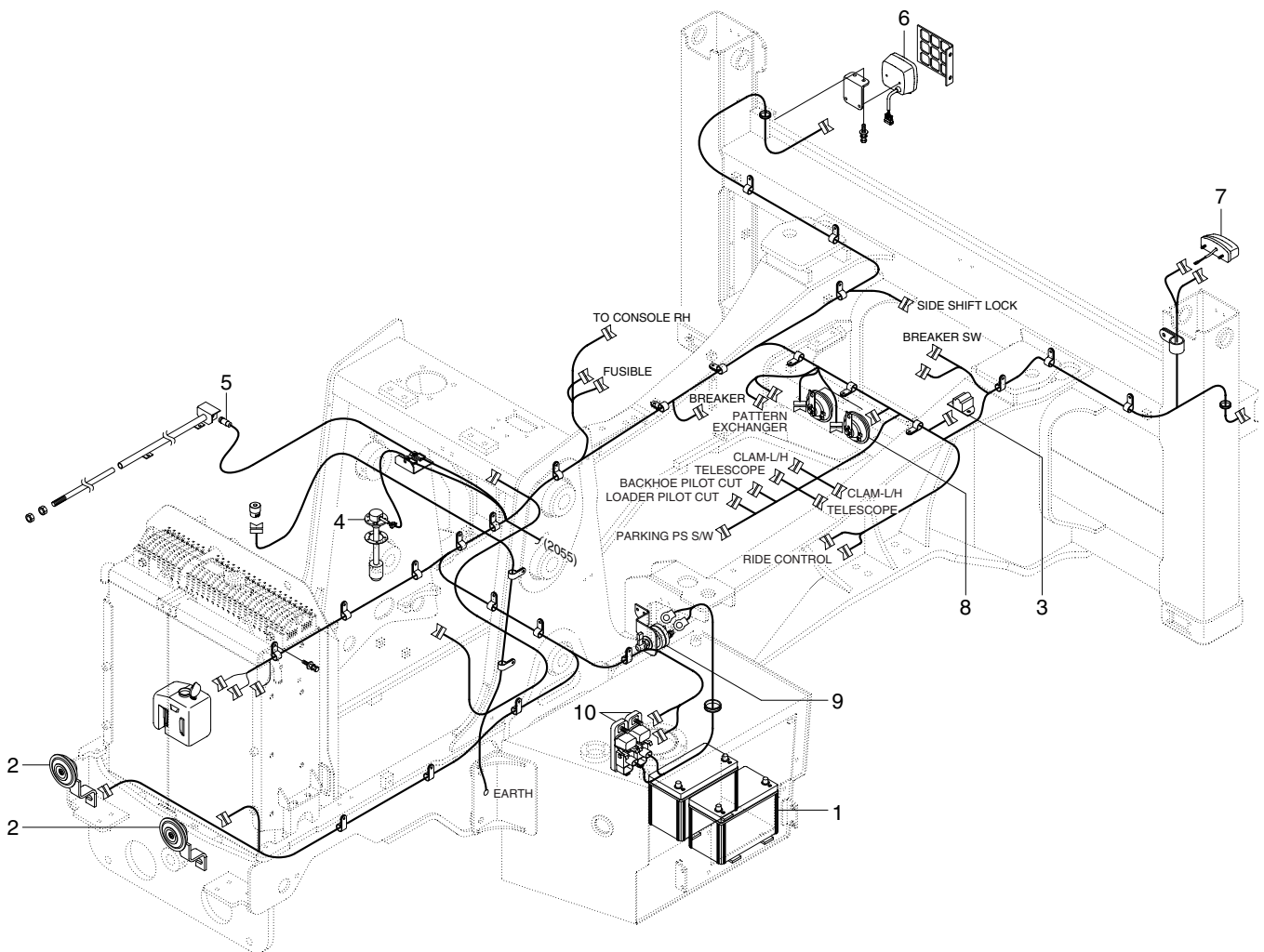
1. LOCATION 1



H940S4WS7EL80

- | | | | | | |
|----|-------------------------------------|----|---------------------------------|----|--------------------------|
| 1 | 4 Wheel drive select switch | 11 | Starting switch | 21 | Rear work lights switch |
| 2 | Ride control switch | 12 | Fuel level gauge | 22 | Beacon switch |
| 3 | Auto select switch | 13 | RPM gauge | 23 | Breaker switch |
| 4 | Differential lock switch | 14 | Coolant temp gauge | 24 | Side shift unlock switch |
| 5 | Hazard warning switch | 15 | Safety switch (loader) | 25 | Rear window wiper switch |
| 6 | Side and head light switch | 16 | Parking brake switch | 26 | Boom swing switch |
| 7 | 3 position rotary switch | 17 | Return to dig switch | 27 | Multi-function switch |
| 8 | Fuel warmer switch | 18 | Air conditioner & heater switch | 28 | Transmission display |
| 9 | Control pattern change switch (opt) | 19 | Buzzer stop switch | 29 | Speed meter |
| 10 | Safety switch (backhoe) | 20 | Front work lights switch | | |

2. LOCATION 2



H940S4WS7EL81

- | | | | | | |
|---|-------------|---|------------------|----|---------------|
| 1 | Battery | 5 | Proximity switch | 9 | Master switch |
| 2 | Horn | 6 | Combination lamp | 10 | Power relay |
| 3 | Back buzzer | 7 | License lamp | | |
| 4 | Fuel sender | 8 | Hone | | |