

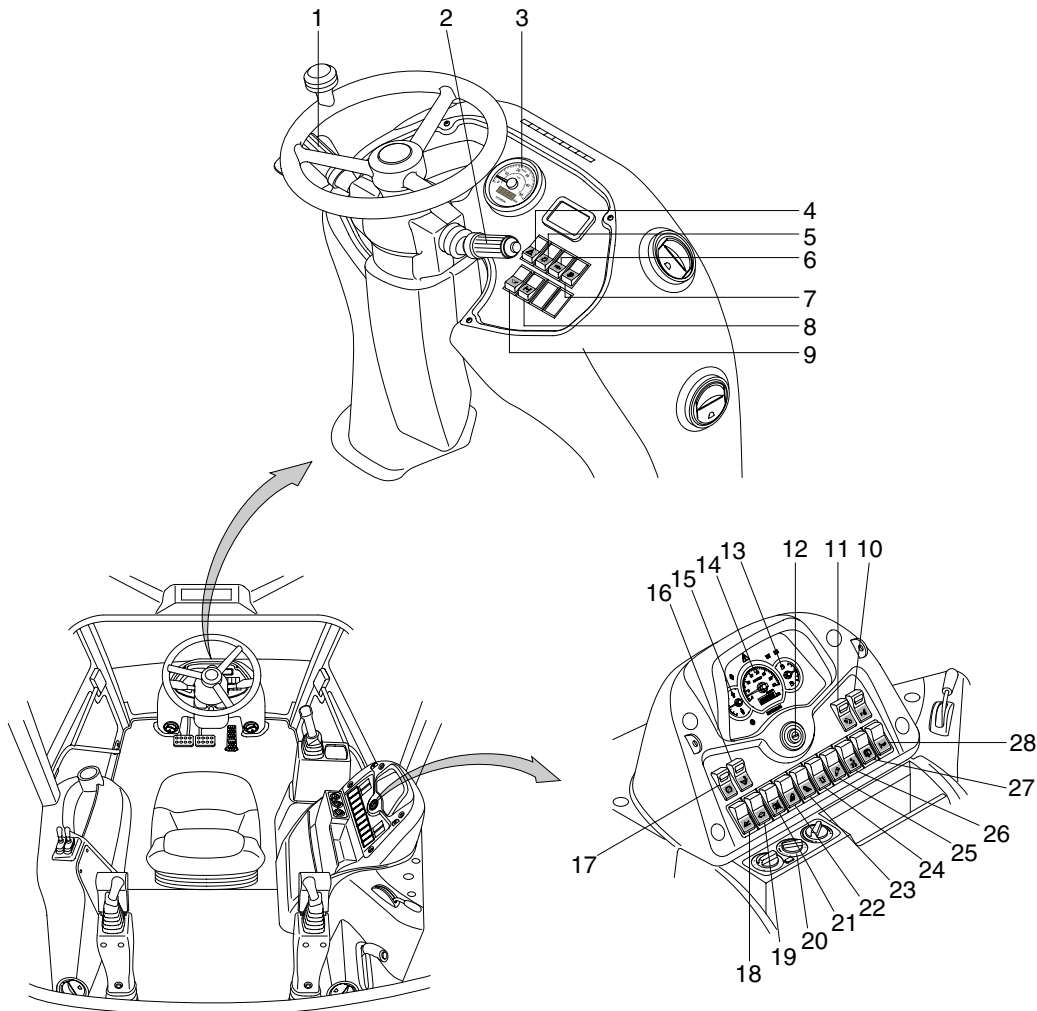
SECTION 7 ELECTRICAL SYSTEM

Group 1 Component Location	7-1
Group 2 Electrical Circuit	7-3
Group 3 Monitoring System	7-26
Group 4 Switches	7-31
Group 5 Electrical Component Specification	7-40
Group 6 Connectors	7-46

SECTION 7 ELECTRICAL SYSTEM

GROUP 1 COMPONENT LOCATION

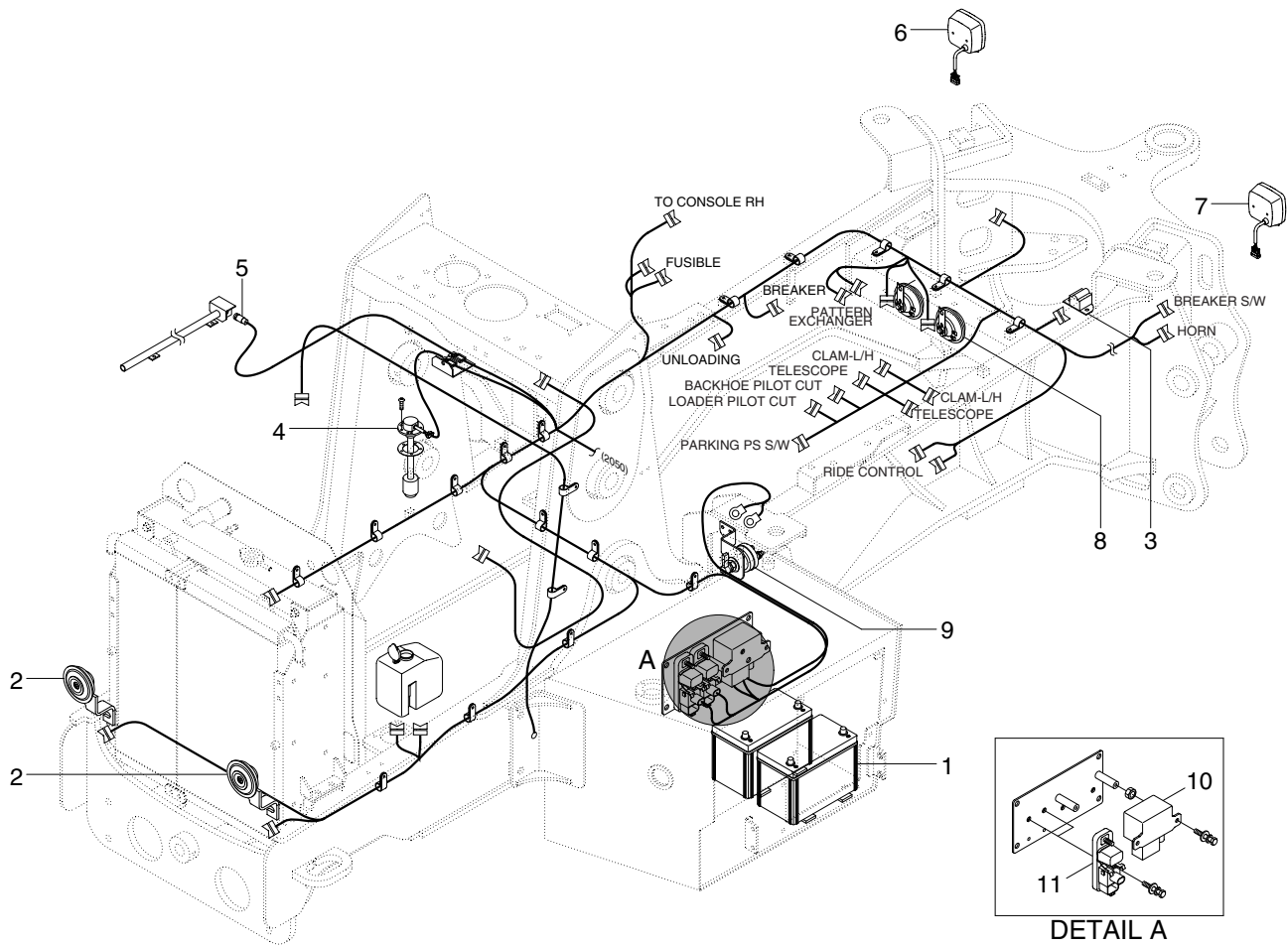
1. LOCATION 1



H940S7EL80

- | | | |
|--|-----------------------------|------------------------------------|
| 1 Gear selector | 11 Safety switch (backhoe) | 20 Air conditioner & heater switch |
| 2 Multi-function switch | 12 Starting switch | 21 Buzzer stop switch |
| 3 Speed meter | 13 Fuel level gauge | 22 Front work lights switch |
| 4 Hazard warning switch | 14 RPM gauge | 23 Rear work lights switch |
| 5 Side and head light switch | 15 Coolant temp gauge | 24 Beacon switch |
| 6 Differential lock switch | 16 Safety switch (loader) | 25 Breaker switch |
| 7 Fuel warmer switch | 17 Parking brake switch | 26 Side shift unlock switch |
| 8 4 Wheel drive select switch | 18 Return to dig switch | 27 Rear window wiper switch |
| 9 Ride control switch | 19 Low speed control switch | 28 Rear wiper switch |
| 10 Control pattern change switch (opt) | | |

2. LOCATION 2



H940C7EL81

- | | | | | | |
|---|-------------|---|-----------------------|----|---------------|
| 1 | Battery | 5 | Proximity switch | 9 | Master switch |
| 2 | Horn | 6 | Combination lamp - LH | 10 | Grid relay |
| 3 | Back buzzer | 7 | Combination lamp - RH | 11 | Power relay |
| 4 | Fuel sender | 8 | Hone | | |