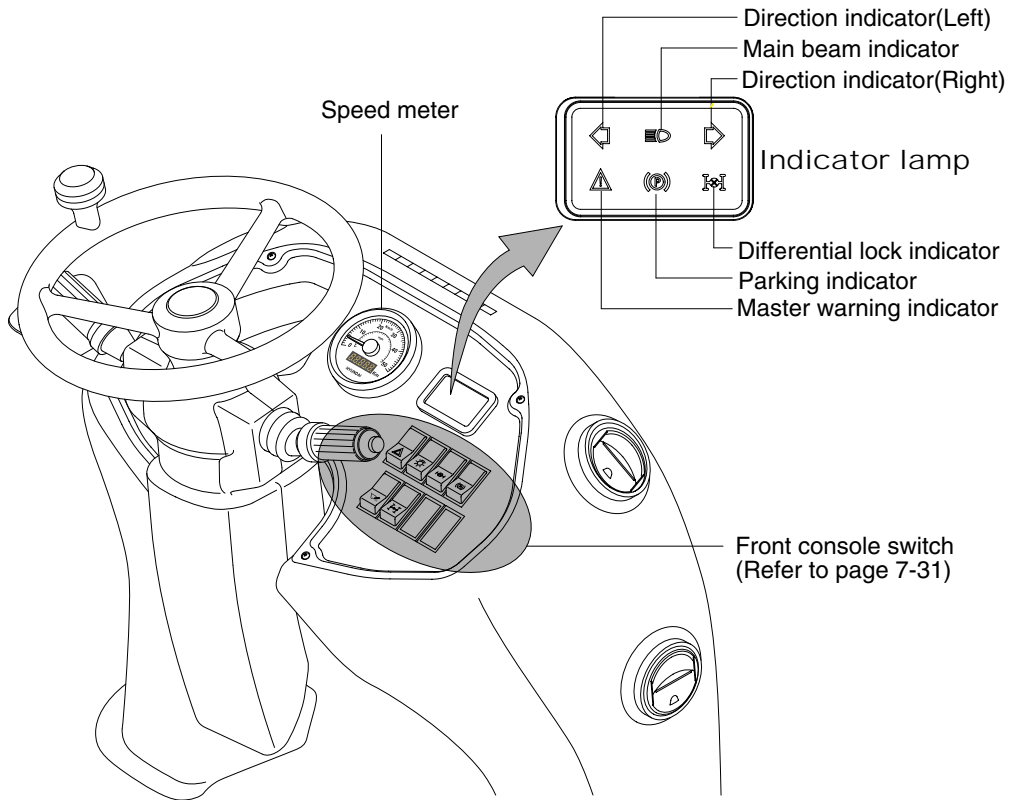


GROUP 3 MONITORING SYSTEM

The indicators are located on the front console and additional instruments and gauges are located at the side of the driver's seat.

1) FRONT CONSOLE

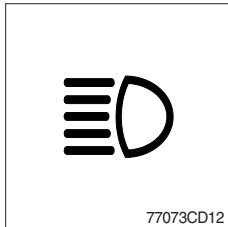
The master warning light and indicator lamps are located in the front console.



H940C7EL70

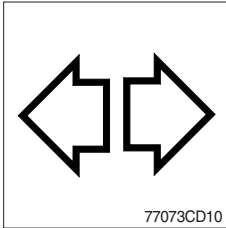
(1) Indicator lamps

① Main beam indicator



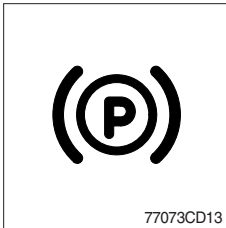
- This lamp works when the illuminating direction is upward.
- This lamp comes ON when the dimmer switch is operated, e.g., when passing another vehicle.

② Direction indicators



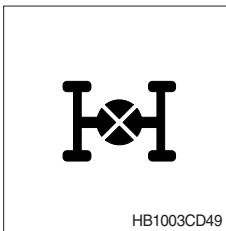
- This lamp flashes when the signal indicator lever is moved.

③ Parking indicator



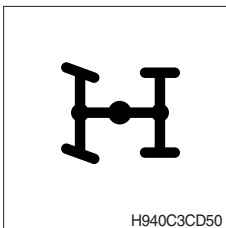
- When the parking brake is actuated, the lamp lights ON.
- ※ Check the lamp is OFF before driving.

④ Differential lock indicator



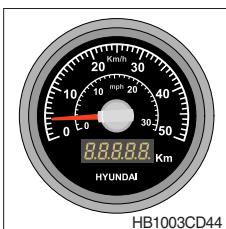
- When the differential lock is actuated, the lamp lights ON.

⑤ 4 Wheel drive indicator (option)



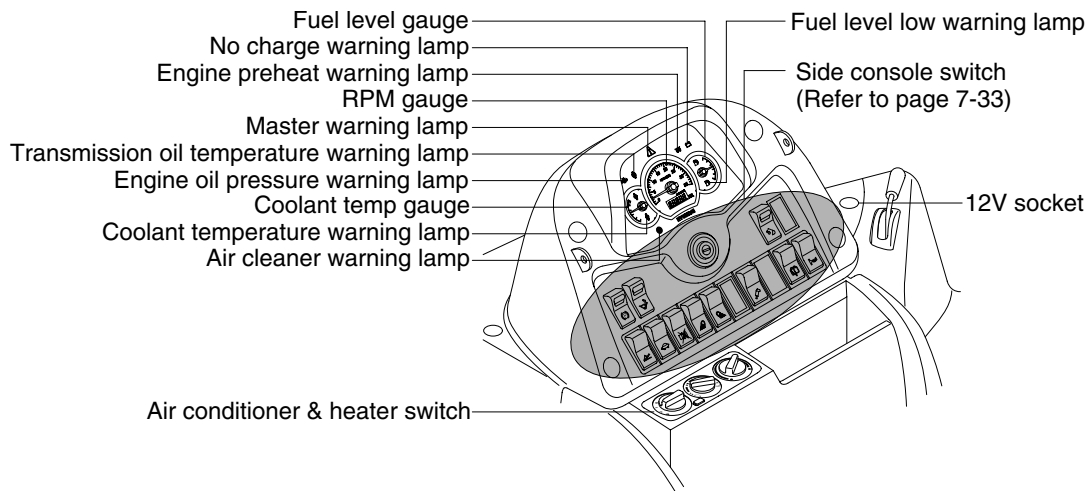
- When the 4 wheel drive is actuated, the lamp lights ON.

(2) Speedometer (option)



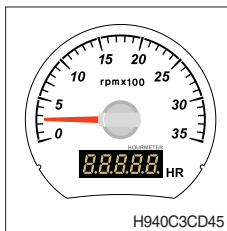
- ① Indicates the road speed in miles per hour (MPH) and/or kilometers per hours (km/h).
- ② Also, shows total traveling mileage of the machine.

2) SIDE CONSOLE



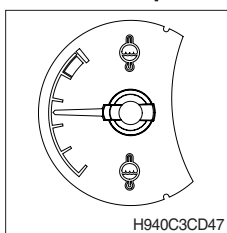
H940C7EL71

(1) RPM gauge



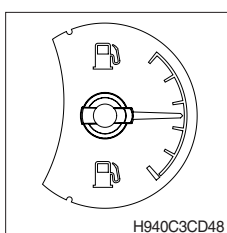
- ① Indicates the engine speed in revolutions per minute (rpm). The rpm is shown on the outer ring. Each division is 100 rpm.
- ② Records the total running time of the engine. Use it to keep a check of running hours during maintenance intervals.

(2) Coolant temperature gauge



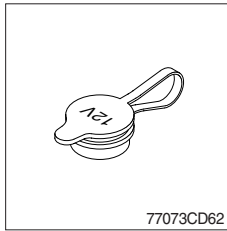
- ① Indicates the temperature of the engine coolant. The gauge pointer will gradually swing upwards as the coolant temperature rises.

(3) Fuel level gauge



- ① Indicates the level of diesel fuel in the fuel tank. Do not let the fuel tank run dry, or air will enter the fuel system.

(4) 12V socket

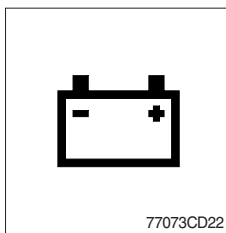


- ① Utilize the power of 12 V as your need and do not exceed power of 12 V, 30 W.

(5) Warning lamps with audible alarm

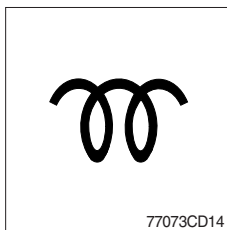
※ If below lamps come on while the engine is running, stop the engine as soon as it is safe to do so. Do not use the machine until the fault is put right.

① No charge warning lamp



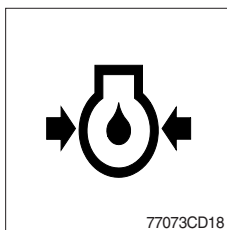
- This lamp is ON when key ON, it is turned OFF after starting the engine.
- Check the battery charging circuit when this lamp comes ON, during engine operation.

② Engine preheat warning lamp



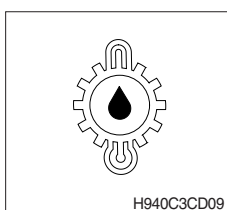
- This lamp lights ON when start switch is turned clockwise to the ON position. Light will turn off after approximately 10~20 seconds, depending on engine coolant temperature, indicating that preheating is completed.
- When the lamp goes out, the operator should start cranking the engine.

③ Engine oil pressure warning lamp



- This lamp is comes ON after starting the engine because of the low oil pressure.
- If the lamp comes ON during engine operation, shut OFF engine immediately. Check oil level.

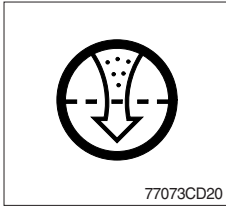
④ Transmission oil temperature warning lamp



- This lamp informs the operator that transmission oil is above the specified temperature.
 - **ON** : Abnormal
 - **OFF** : Normal

※ When this lamp lights up during operation, stop the engine and check the machine.

⑤ Air cleaner warning lamp



- This lamp lights ON when the filter of air cleaner is clogged.
- ※ Check the filter and clean or replace it when the lamp is ON.

⑥ Master warning lamp



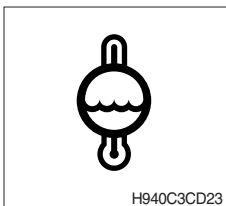
- ① This master warning lamp will illuminate when any of the below warning lights are illuminated.
Air cleaner blocked ; Engine preheat ; Transmission oil temperature ; Engine oil pressure ; No charge ; Fuel level low ; Coolant temperature.
- ※ When this warning lamp lights ON, machine must be checked or serviced as soon as possible.

⑦ Fuel level low warning lamp



- Fill the fuel immediately when the lamp is turned ON.

⑧ Coolant temperature warning lamp



- This lamp is turned ON when the temperature of coolant is over the normal temperature (104°C, 219°F).
- ※ Check the cooling system when the lamp is ON.