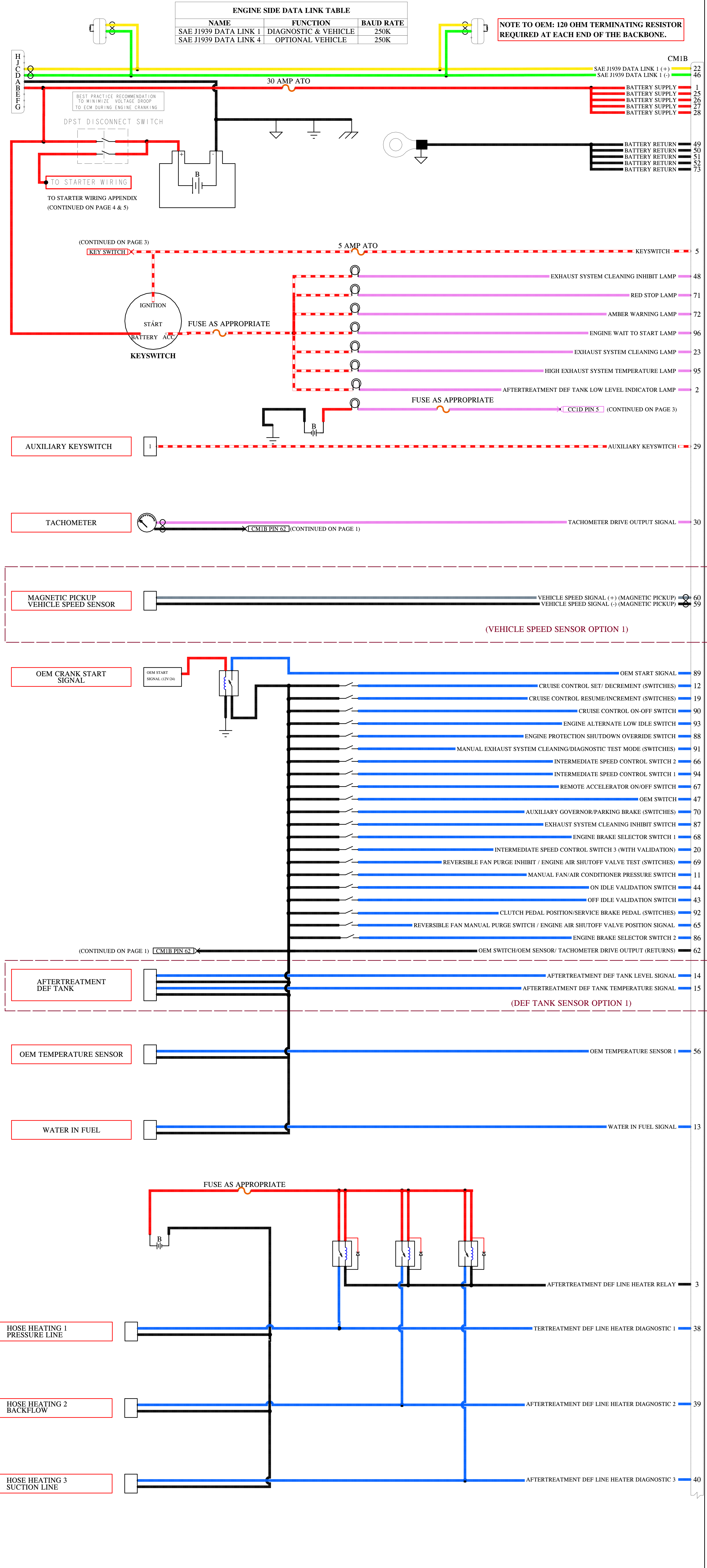
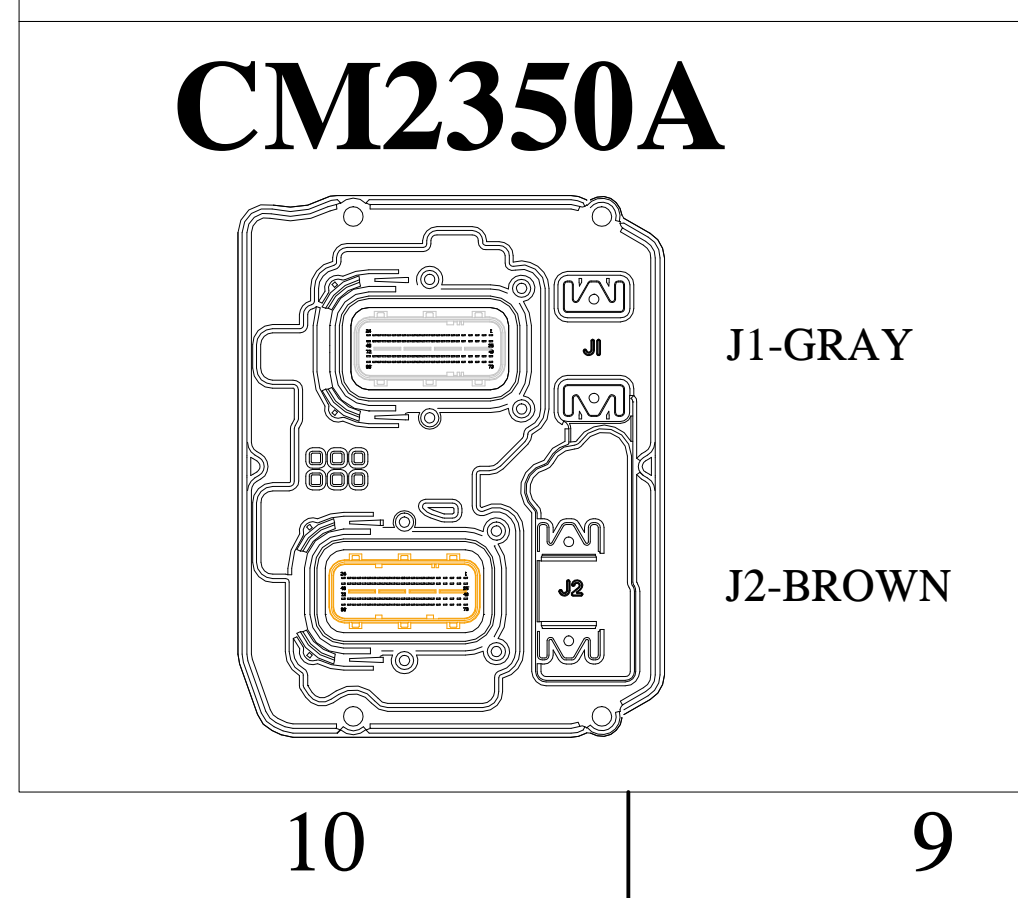


- ALL CONNECTIONS ON THE CM1B CONNECTOR (OEM SIDE) ARE ONLY INTENDED TO GIVE A GENERAL IDEA. TO GET ACCESS TO THE MOST UP TO DATE OEM INTERFACE REFER TO THE CEB 00515.
- CUMMINS REQUIRES WIRING A SUPPRESSION DIODE ACROSS THE RELAY COIL IF THE RELAY DOES NOT CONTAIN AN INTEGRAL SUPPRESSION DIODE. THIS APPLIES TO ALL RELAYS USED IN THE SYSTEM.
- REFER TO CEB 00514 - INDUSTRIAL STAGE V AFTERTREATMENT ELECTRONIC PACKAGE AND CEB 00515 - CM2350 LEAD FREE ELECTRONIC TECHNICAL PACKAGE- MIDRANGE AND HEAVY DUTY INDUSTRIAL ELECTRONIC SUBSYSTEM STAGE V
- BEST PRACTICE RECOMMENDATION TO MINIMIZE VOLTAGE DROP TO ECM DURING ENGINE CRANKING VOLTAGE AT ECM SHALL NOT DROP BELOW 6V.
- FOR ADDITIONAL INFORMATION REGARDING TWISTED PAIR/ TRIPLET, REFER TO CEB 00515.
- CEB'S CAN BE FOUND AT: <https://gec.cummins.com>



CUMMINS CONFIDENTIAL



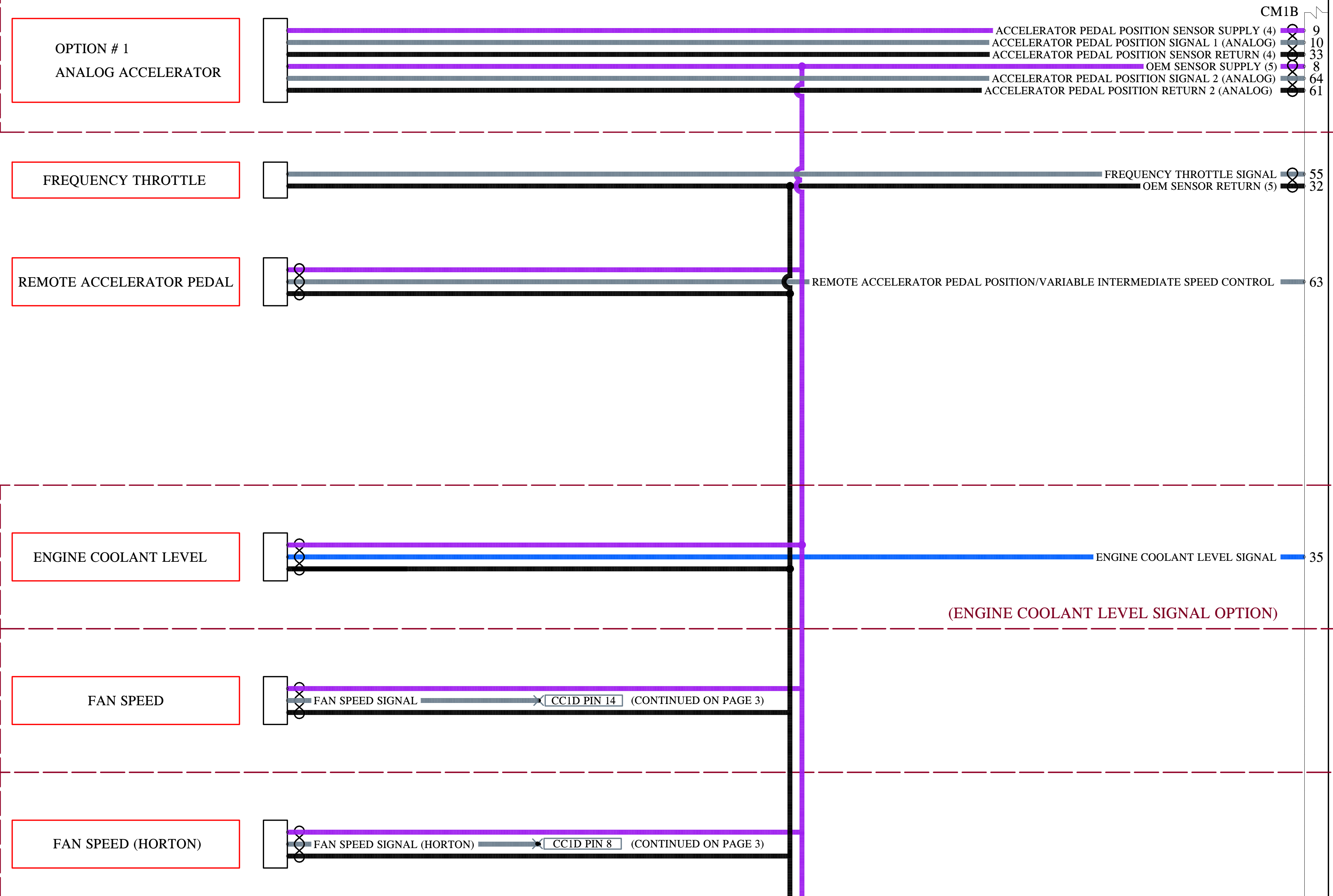
CM1B	DELPHI	13964572
CONNECTOR	NONE	NONE
ALT CONNECTOR	DELPHI	15494608
TERMINAL PLATING	DELPHI	15318164
TPA/WEDGE	DELPHI	15494608
CAVITY PLUG	DELPHI	15318164
CONNECTOR	DELPHI	13964572
ALT CONNECTOR	NONE	NONE
TERMINAL PLATING	DELPHI	15318164
TPA/WEDGE	DELPHI	15494608
CAVITY PLUG	DELPHI	15318164

ENGINEERING STANDARD:	CES 10903	RELEASE NUMBER:	160072-028
ENGINEERING STANDARD:	FEP 00048356	I/O MATRIX:	CM2350 PV I/O MATRIX REVISION 21
INSPECTION STANDARD:	FEP 00048355	DRAFTER:	Alicia Martinez
WIRE COLOR STANDARD:	FEP 00046857	CHECKER:	Feifei Feng
INDUSTRY STANDARD:	SAE J1939-15 SECTION 5.2.2	DESIGN APPROVAL:	John Jervis

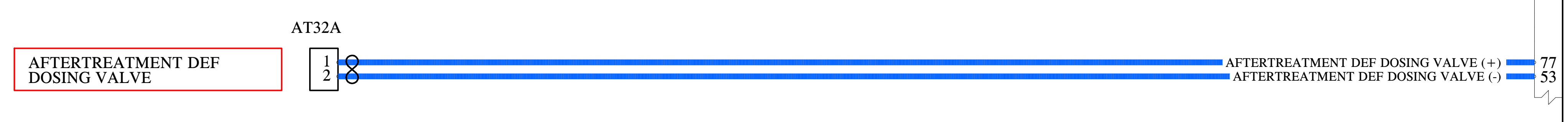
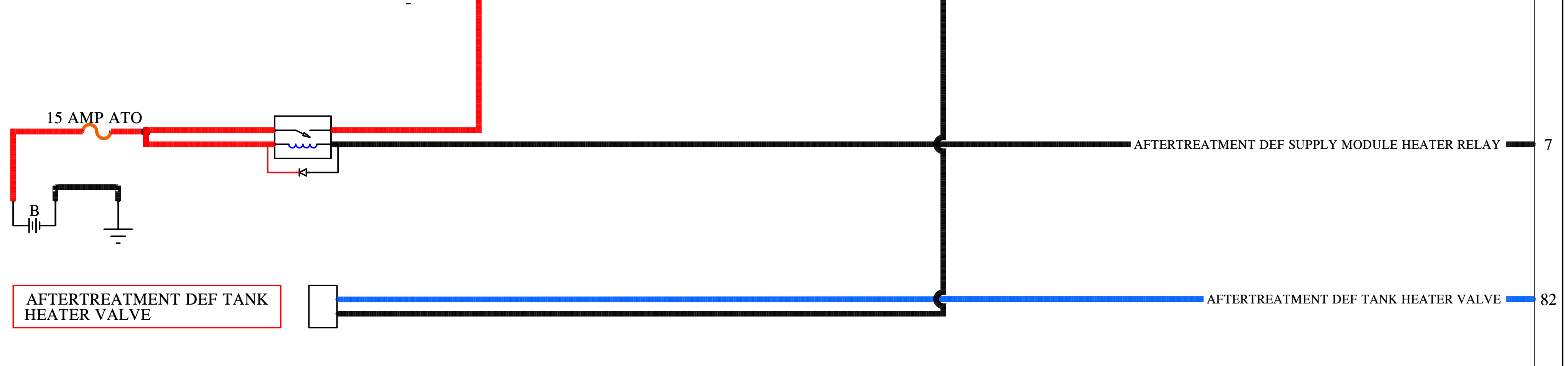
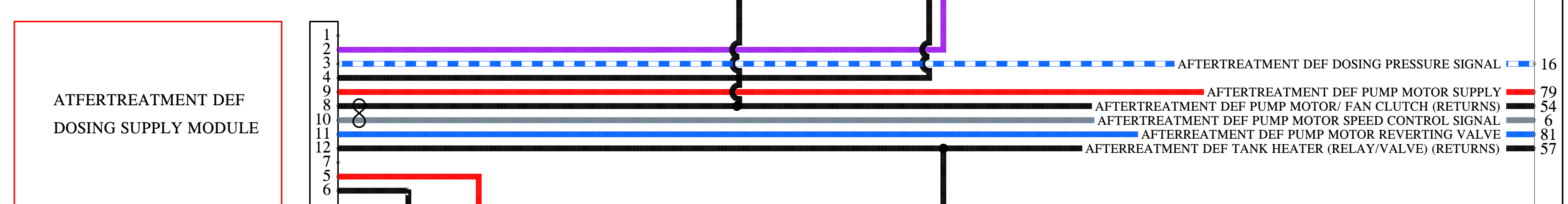
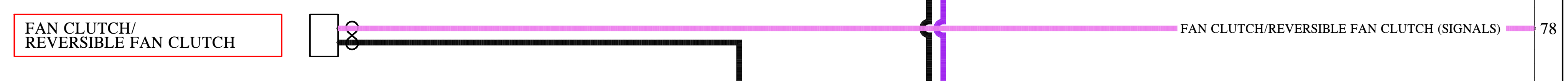
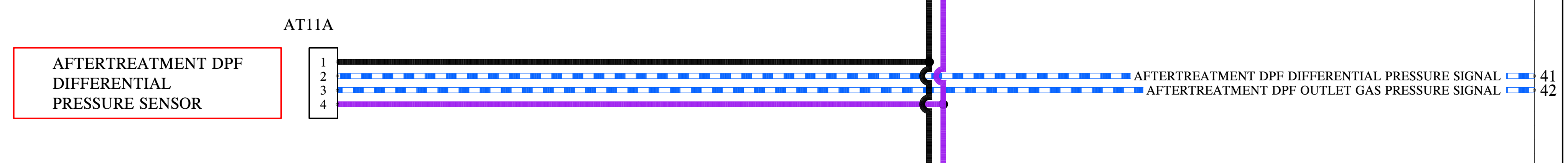
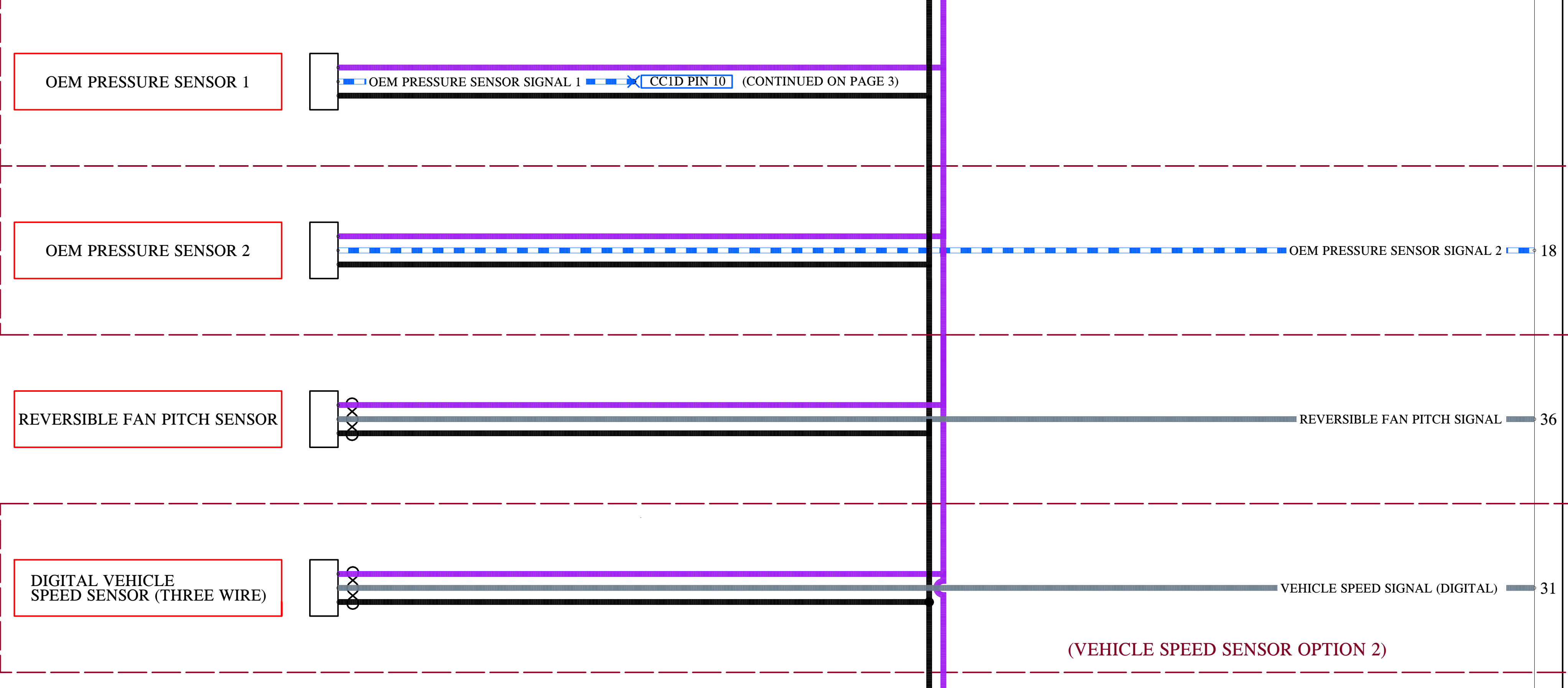
CUMMINS INC.	
THIS DOCUMENT (AND THE INFORMATION SHOWN THEREON) IS CONFIDENTIAL AND PROPRIETARY AND SHALL NOT BE DISCLOSED TO OTHERS IN HARD COPY OR ELECTRONIC FORM, REPRODUCED BY ANY MEANS, OR USED FOR ANY PURPOSE WITHOUT WRITTEN CONSENT OF CUMMINS INC.	
SIZE J	ITEM NAME: DIAGRAM, WIRING
	IDENTIFIER: WIRING DIAGRAM
CODE IDENT NO: -	ITEM NUMBER: 5445380
REVISION: 4	SHEET 1 OF 7

CUMMINS CONFIDENTIAL

- ALL CONNECTIONS ON THE CM1B CONNECTOR (OEM SIDE) ARE ONLY INTENDED TO GIVE A GENERAL IDEA. TO GET ACCESS TO THE MOST UP TO DATE OEM INTERFACE REFER TO THE CEB 00515.
- CUMMINS REQUIRES WIRING A SUPPRESSION DIODE ACROSS THE RELAY COIL IF THE RELAY DOES NOT CONTAIN AN INTEGRAL SUPPRESSION DIODE. THIS APPLIES TO ALL RELAYS USED IN THE SYSTEM.
- REFER TO CEB 00514 - INDUSTRIAL STAGE V AFTERTREATMENT ELECTRONIC PACKAGE AND CEB 00515 - CM2350 LEAD FREE ELECTRONIC TECHNICAL PACKAGE- MIDRANGE AND HEAVY DUTY INDUSTRIAL ELECTRONIC SUBSYSTEM STAGE V
- BEST PRACTICE RECOMMENDATION TO MINIMIZE VOLTAGE DROP TO ECM DURING ENGINE CRANKING VOLTAGE AT ECM SHALL NOT DROP BELOW 6V.
- FOR ADDITIONAL INFORMATION REGARDING TWISTED PAIR/ TRIPLETS, REFER TO CEB 00515.
- CEB'S CAN BE FOUND AT: <https://gec.cummins.com>



(GROUND)	(BATTERY SIGNAL)
(SENSOR SIGNAL)	(SWITCHED BATTERY)
(SPEED/POSITION SIGNAL)	(OUTPUT DRIVER)
(HIGH/LOW DRIVER)	(PRESSURE SIGNAL)
(J1939 +)	(J1939 -)
(SENSOR SUPPLY)	(BATTERY)
(BLOCK GROUND)	(CHASSIS GROUND)
(BATTERY GROUND)	



AT11A		
CONNECTOR	FRAMATOME	F715600
ALT CONNECTOR	NONE	NONE
TERMINAL PLATING	FRAMATOME	
TPA/WEDGE	NONE	NONE
PART NUMBER		4383998

12 VOLT ENGINES

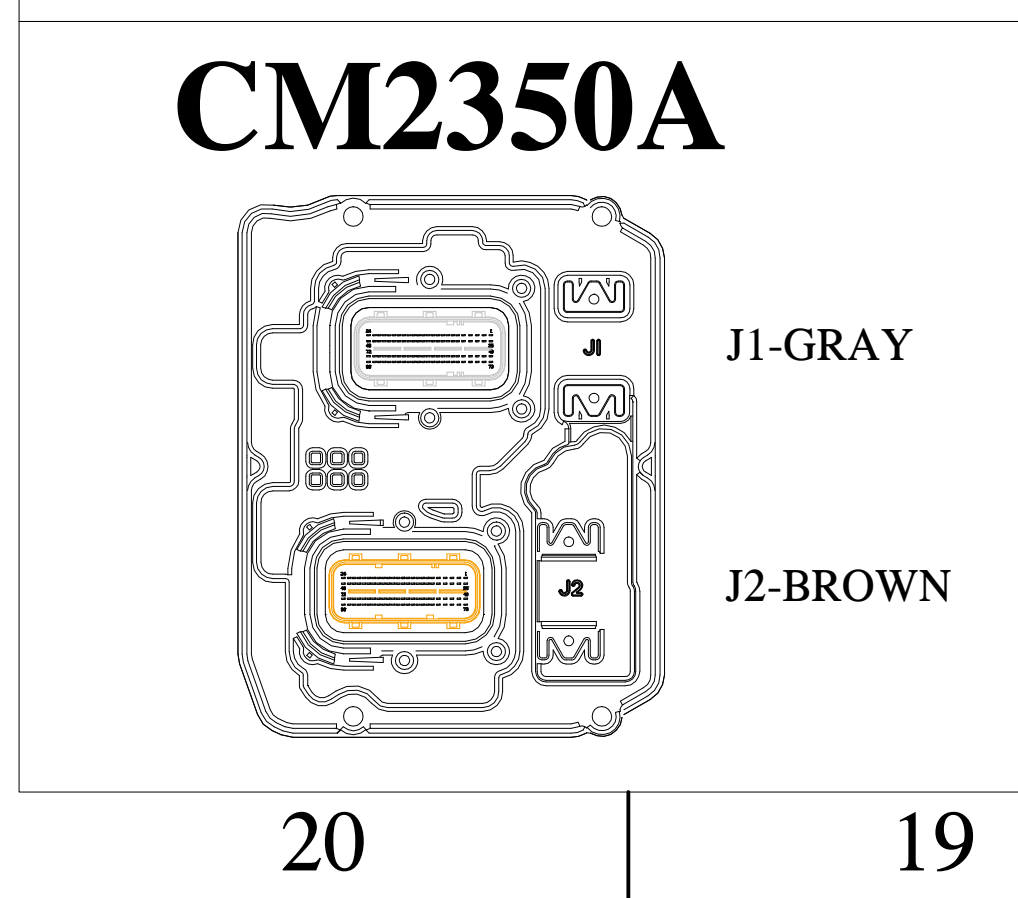
AT6A		
CONNECTOR	TYCO	1-1703639-1
ALT CONNECTOR	NONE	NONE
TERMINAL PLATING	TYCO	
TPA/WEDGE	NONE	NONE
PART NUMBER		4387304

24 VOLT ENGINES

AT6B		
CONNECTOR	TYCO	2-1703639-1
ALT CONNECTOR	NONE	NONE
TERMINAL PLATING	TYCO	
TPA/WEDGE	NONE	NONE
PART NUMBER		4387305

12 AND 24 VOLT ENGINES

AT32A		
CONNECTOR	BOSCH	1-928405-522
ALT CONNECTOR	NONE	NONE
TERMINAL PLATING	BOSCH	
TPA/WEDGE	NONE	NONE
PART NUMBER		4394644



CM1B		
CONNECTOR	DELPHI	13964572
ALT CONNECTOR	NONE	NONE
TERMINAL PLATING	DELPHI	AG
TPA/WEDGE	DELPHI	15494608
CAVITY PLUG	DELPHI	15318164
CONNECTOR	DELPHI	13964572
ALT CONNECTOR	NONE	NONE
TERMINAL PLATING	DELPHI	AG
TPA/WEDGE	DELPHI	15494608
CAVITY PLUG	DELPHI	15318164

ENGINEERING STANDARD:	CES 10903	RELEASE NUMBER:	160072-028		
ENGINEERING STANDARD:	FEP 00048356	I/O MATRIX:	CM2350 PV I/O MATRIX REVISION 21		
INSPECTION STANDARD:	FEP 00048355	DRAFTER:	Alicia Martinez	DATE:	MAR 24 2020
WIRE COLOR STANDARD:	FEP 00046857	CHECKER:	Feifei Feng	DATE:	MAR 24 2020
INDUSTRY STANDARD:	SAE J1939-15 SECTION 5.2.2	DESIGN APPROVAL:	John Jervis	DATE:	MAR 24 2020

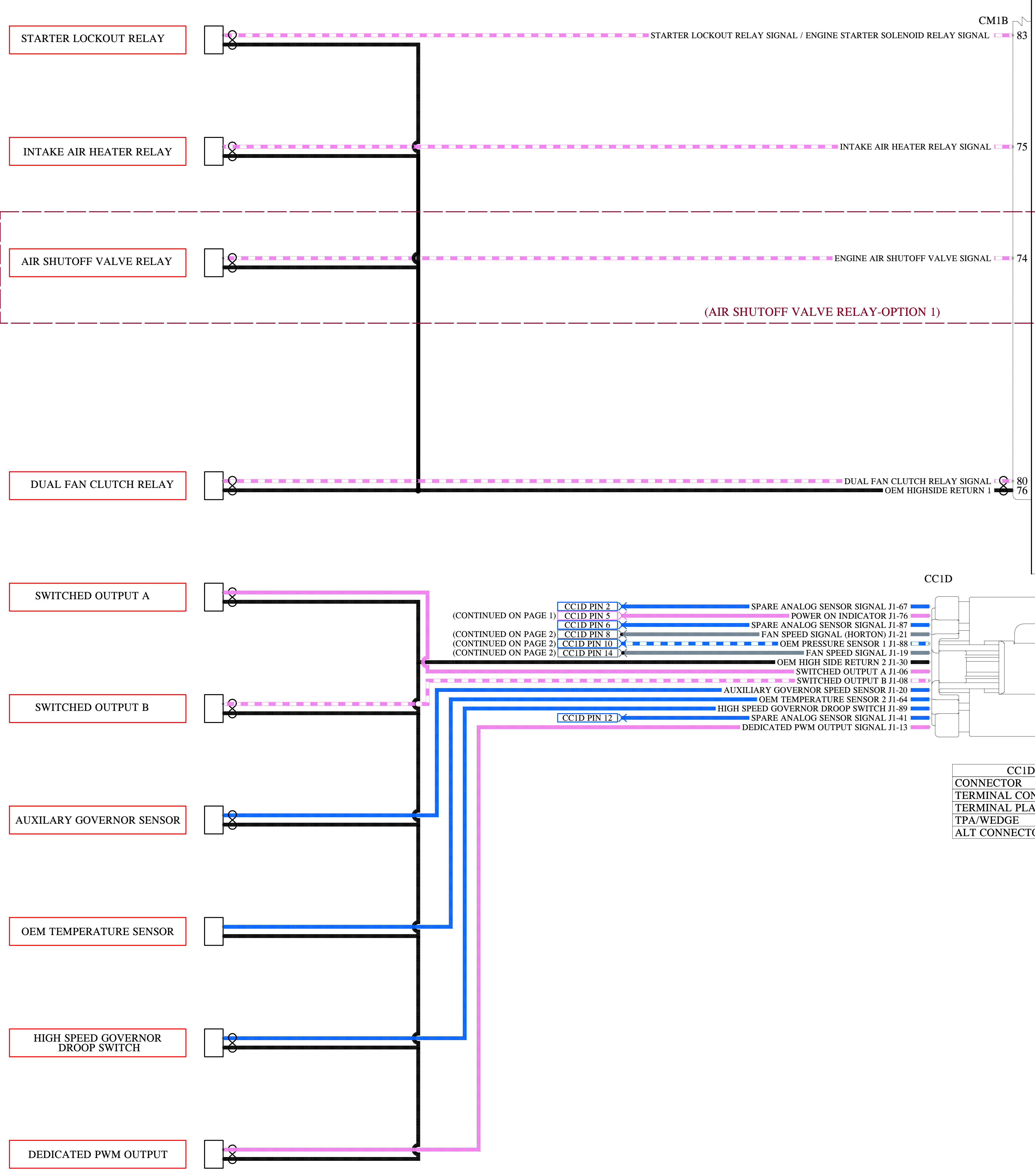
CUMMINS INC.

THIS DOCUMENT (AND THE INFORMATION SHOWN THERON) IS CONFIDENTIAL AND PROPRIETARY AND SHALL NOT BE DISCLOSED TO OTHERS IN HARD COPY OR ELECTRONIC FORM. REPRODUCED BY ANY MEANS, OR USED FOR ANY PURPOSE WITHOUT WRITTEN CONSENT OF CUMMINS INC.

SIZE	J	ITEM NAME:	DIAGRAM, WIRING
IDENTIFIER:		WIRING DIAGRAM	
CODE IDENT NO:	-	ITEM NUMBER:	5445380
REVISION:	4	SHEET	2 OF 7

CUMMINS CONFIDENTIAL

- ALL CONNECTIONS ON THE CM1B CONNECTOR (OEM SIDE) ARE ONLY INTENDED TO GIVE A GENERAL IDEA. TO GET ACCESS TO THE MOST UP TO DATE OEM INTERFACE REFER TO THE CEB 00515.
- CUMMINS REQUIRES WIRING A SUPPRESSION DIODE ACROSS THE RELAY COIL IF THE RELAY DOES NOT CONTAIN AN INTEGRAL SUPPRESSION DIODE. THIS APPLIES TO ALL RELAYS USED IN THE SYSTEM.
- REFER TO CEB 00514 - INDUSTRIAL STAGE V AFTERTREATMENT ELECTRONIC PACKAGE AND CEB 00515 - CM2350 LEAD FREE ELECTRONIC TECHNICAL PACKAGE- MIDRANGE AND HEAVY DUTY INDUSTRIAL ELECTRONIC SUBSYSTEM STAGE V
- BEST PRACTICE RECOMMENDATION TO MINIMIZE VOLTAGE DROP TO ECM DURING ENGINE CRANKING VOLTAGE AT ECM SHALL NOT DROP BELOW 6V.
- FOR ADDITIONAL INFORMATION REGARDING TWISTED PAIR/ TRIPLETS, REFER TO CEB 00515.
- CEB'S CAN BE FOUND AT:
<https://gce.cummins.com>



CC8D		
CONNECTOR	DEUTSCH	DT06-4S-CE05
TERMINAL CONNECTOR	TYCO	NONE
TERMINAL PLATING	TYCO	AU
TPA/WEDGE	TYCO	W4P
ALT CONNECTOR	NONE	NONE

12 AND 24 VOLT ENGINES

AT9A			
CONNECTOR	TYCO	4-1418390-1	
ALT CONNECTOR	NONE	NONE	
TERMINAL PLATING	TYCO	AU	
TPA/WEDGE	NONE	NONE	
PART NUMBER			4384576

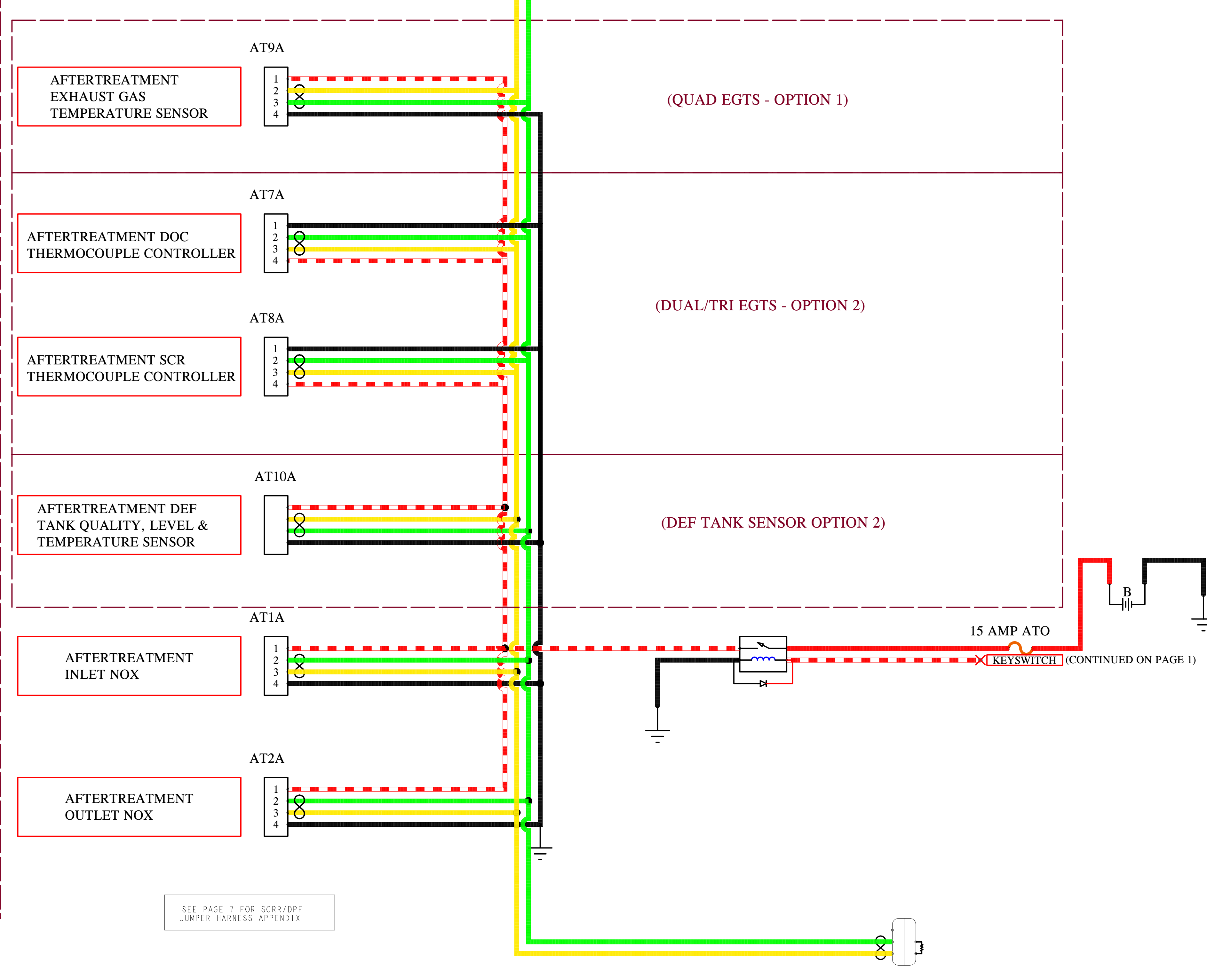
AT7A			
CONNECTOR	TYCO	1-1418390-1	
ALT CONNECTOR	NONE	NONE	
TERMINAL PLATING	TYCO	AU	
TPA/WEDGE	NONE	NONE	
PART NUMBER			5461947

AT8A			
CONNECTOR	TYCO	2-1418390-1	
ALT CONNECTOR	NONE	NONE	
TERMINAL PLATING	TYCO	AU	
TPA/WEDGE	NONE	NONE	
PART NUMBER			5461945

AT10A			
CONNECTOR	OEM	CEB00515	
ALT CONNECTOR	NONE	NONE	
TERMINAL PLATING	NA	AU	
TPA/WEDGE	NONE	NONE	
PART NUMBER			CEB00515

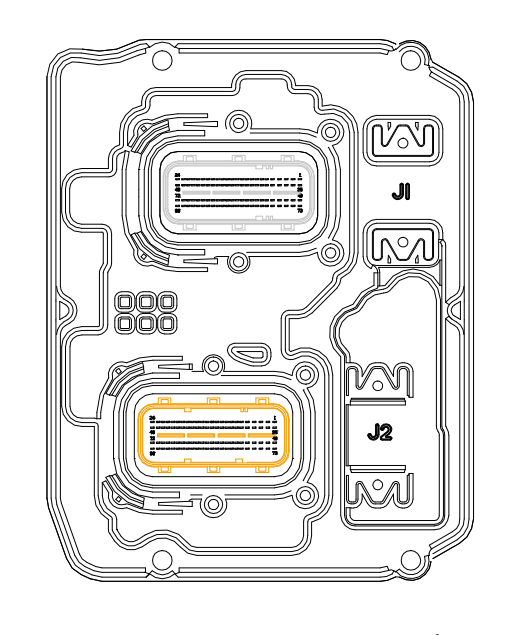
AT1A			
CONNECTOR	TYCO	2-1418390-1	
ALT CONNECTOR	NONE	NONE	
TERMINAL PLATING	TYCO	AG	
TPA/WEDGE	NONE	NONE	
PART NUMBER			5491433

AT2A			
CONNECTOR	TYCO	1-1418390-1	
ALT CONNECTOR	NONE	NONE	
TERMINAL PLATING	TYCO	AG	
TPA/WEDGE	NONE	NONE	
PART NUMBER			5491434



NOTE TO OEM: 120 OHM TERMINATING RESISTOR REQUIRED AT EACH END OF THE BACKBONE.

CM2350A



CM1B			
CONNECTOR	DELPHI	13964572	
ALT CONNECTOR	NONE	NONE	
TERMINAL PLATING	DELPHI	AG	
TPA/WEDGE	DELPHI	15494608	
CAVITY PLUG	DELPHI	15318164	
CONNECTOR	DELPHI	13964572	
ALT CONNECTOR	NONE	NONE	
TERMINAL PLATING	DELPHI	AG	
TPA/WEDGE	DELPHI	15494608	
CAVITY PLUG	DELPHI	15318164	

ENGINEERING STANDARD:	CES 10903	RELEASE NUMBER:	160072-028
ENGINEERING STANDARD:	FEP 00048356	I/O MATRIX:	CM2350 PV IO MATRIX REVISION 21
INSPECTION STANDARD:	FEP 00048355	DRAFTER:	Alicia Martinez
WIRE COLOR STANDARD:	FEP 00046857	CHECKER:	Feifei Feng
INDUSTRY STANDARD:	SAE J1939-15 SECTION 5.2.2	DESIGN APPROVAL:	John Jervis

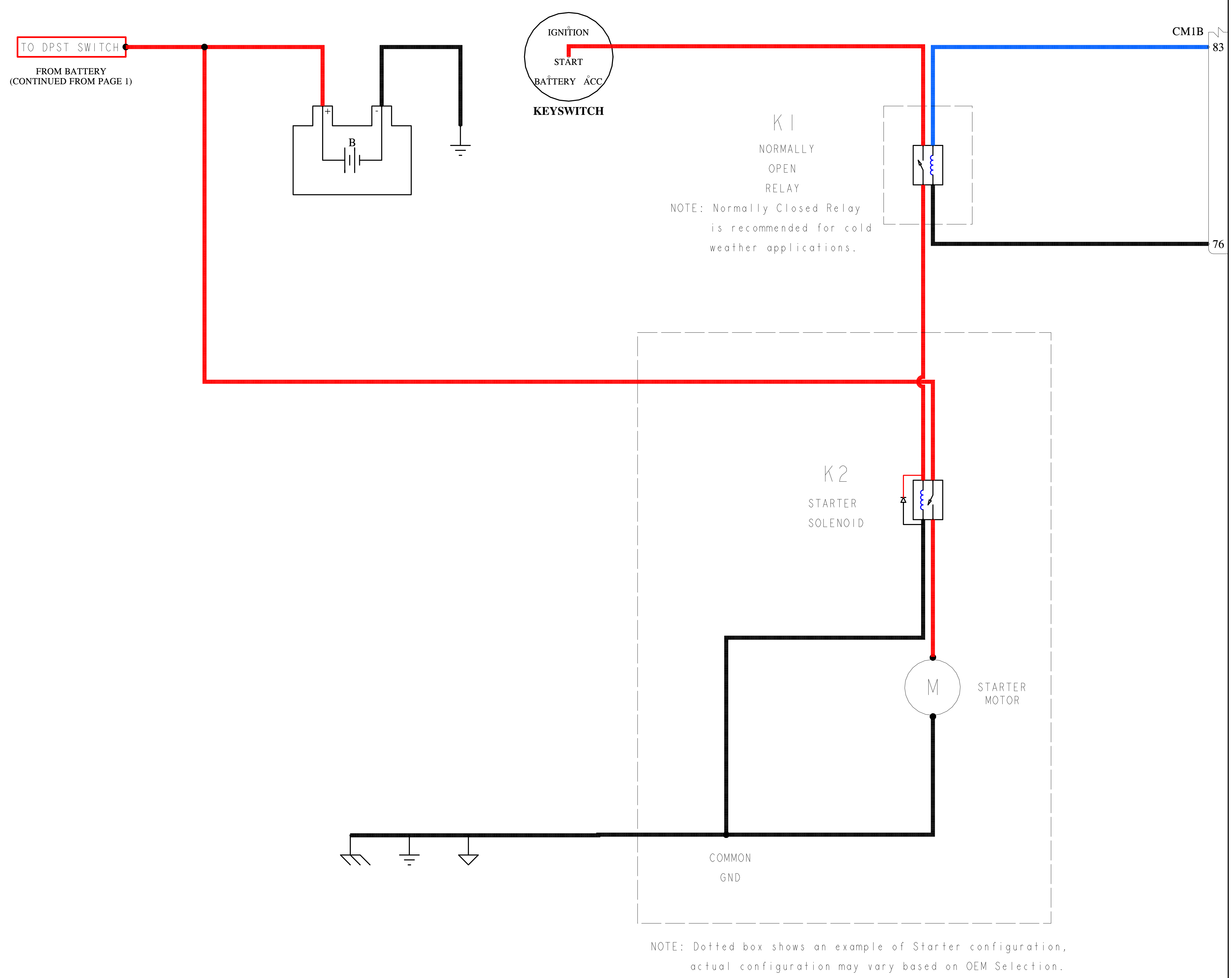
CUMMINS INC.

THIS DOCUMENT (AND THE INFORMATION SHOWN THERON) IS CONFIDENTIAL AND PROPRIETARY AND SHALL NOT BE DISCLOSED TO OTHERS IN HARD COPY OR ELECTRONIC FORM. REPRODUCED BY ANY MEANS, OR USED FOR ANY PURPOSE WITHOUT WRITTEN CONSENT OF CUMMINS INC.

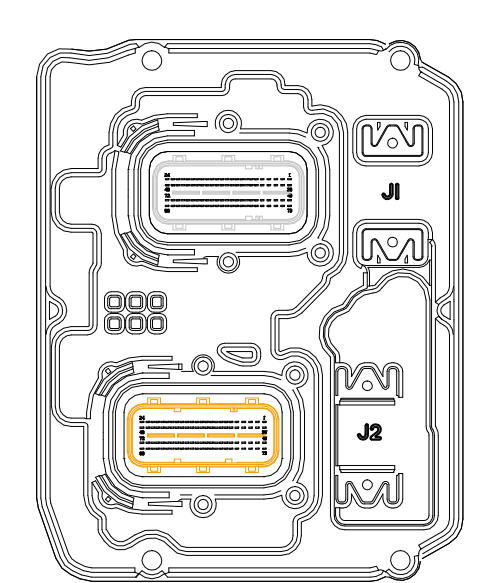
SIZE	ITEM NAME:	DIAGRAM, WIRING
J	IDENTIFIER:	WIRING DIAGRAM
	CODE IDENT NO:	-
	ITEM NUMBER:	5445380
	REVISION:	4
	SHEET	3 OF 7

CUMMINS CONFIDENTIAL

Regular Start used for Non Stop/Start and Non Push Button Start



CM2350A



J1-GRAY
J2-BROWN

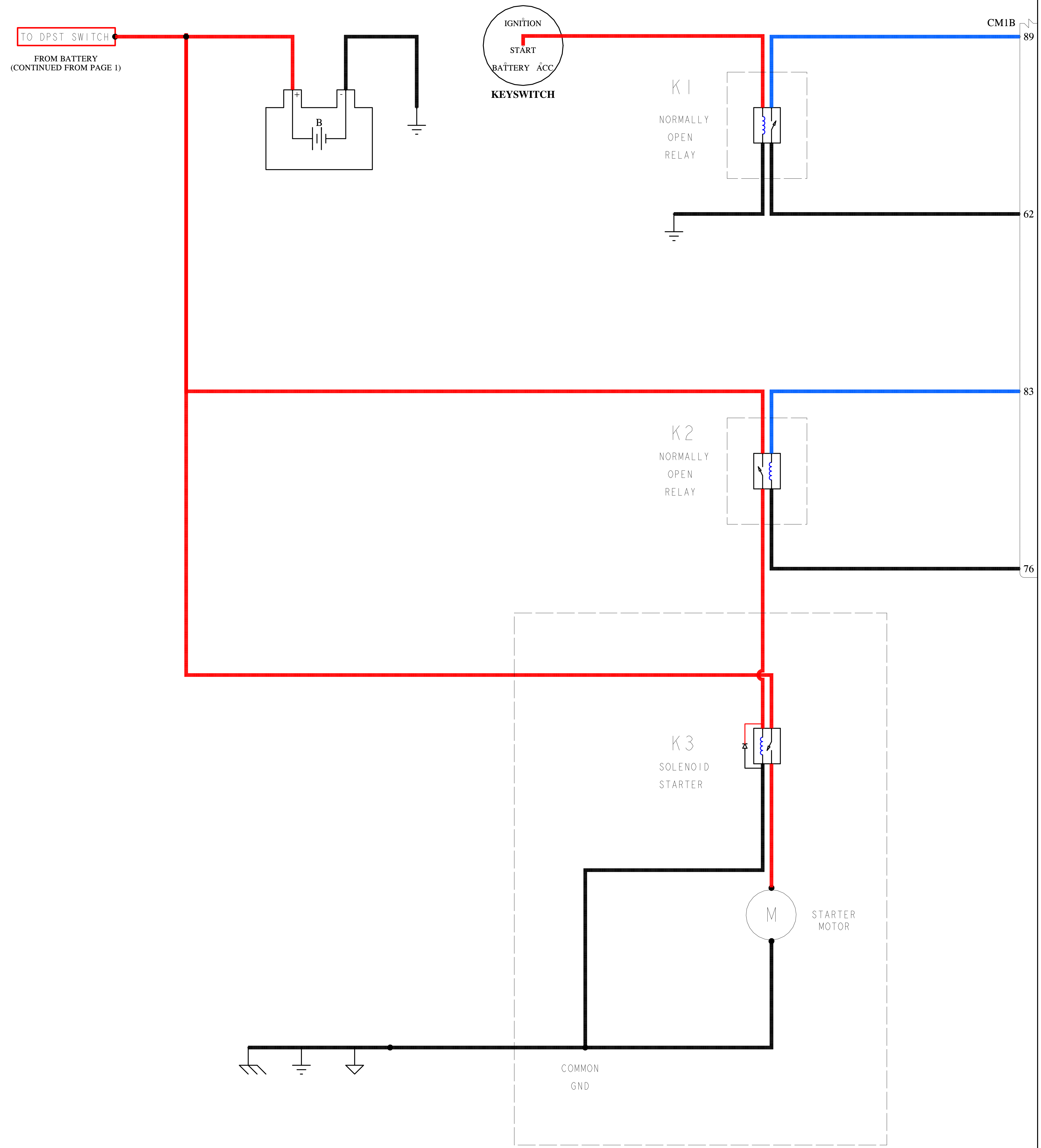
CMIB	
CONNECTOR	DELPHI 13964572
ALT CONNECTOR	NONE NONE
TERMINAL PLATING	DELPHI AG
TPA/WEDGE	DELPHI 15494608
CAVITY PLUG	DELPHI 15318164
CONNECTOR	DELPHI 13964572
ALT CONNECTOR	NONE NONE
TERMINAL PLATING	DELPHI AG
TPA/WEDGE	DELPHI 15494608
CAVITY PLUG	DELPHI 15318164

ENGINEERING STANDARD:	CES 10903	RELEASE NUMBER:	160072-028
ENGINEERING STANDARD:	FEP 00048356	I/O MATRIX:	CM2350 PV IO MATRIX REVISION 21
INSPECTION STANDARD:	FEP 00048355	DRAFTER:	Alicia Martinez
		DATE:	MAR 24 2020
WIRE COLOR STANDARD:	FEP 00046857	CHECKER:	Feifei Feng
		DATE:	MAR 24 2020
INDUSTRY STANDARD:	SAE J1939-15 SECTION 5.2.2	DESIGN APPROVAL:	John Jervis
		DATE:	MAR 24 2020

CUMMINS INC.			
THIS DOCUMENT (AND THE INFORMATION SHOWN THERON) IS CONFIDENTIAL AND PROPRIETARY AND SHALL NOT BE DISCLOSED TO OTHERS IN HARD COPY OR ELECTRONIC FORM. REPRODUCED BY ANY MEANS, OR USED FOR ANY PURPOSE WITHOUT WRITTEN CONSENT OF CUMMINS INC.			
SIZE	ITEM NAME:	DIAGRAM, WIRING	
J	IDENTIFIER:	WIRING DIAGRAM	
CODE IDENT NO:	-	ITEM NUMBER:	5445380
REVISION:	4	SHEET	4 OF 7

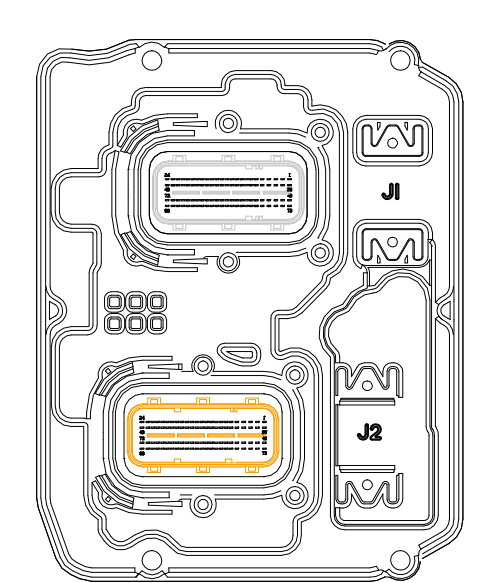
CUMMINS CONFIDENTIAL

ECM Controlled Start used for Stop/Start and Push Button Start



NOTE: Dotted box shows an example of Starter configuration, actual configuration may vary based on OEM Selection.

CM2350A



J1-GRAY
J2-BROWN

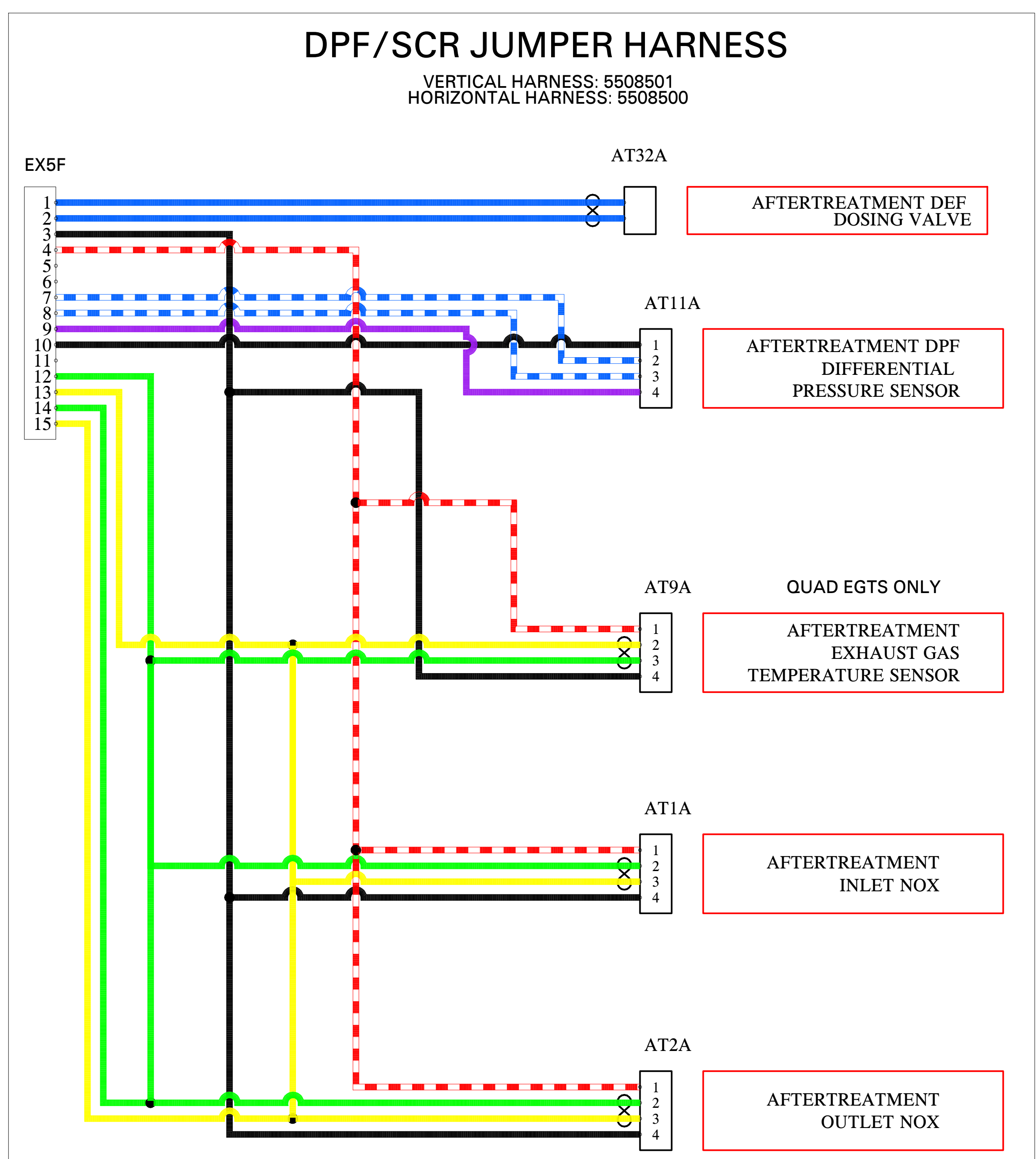
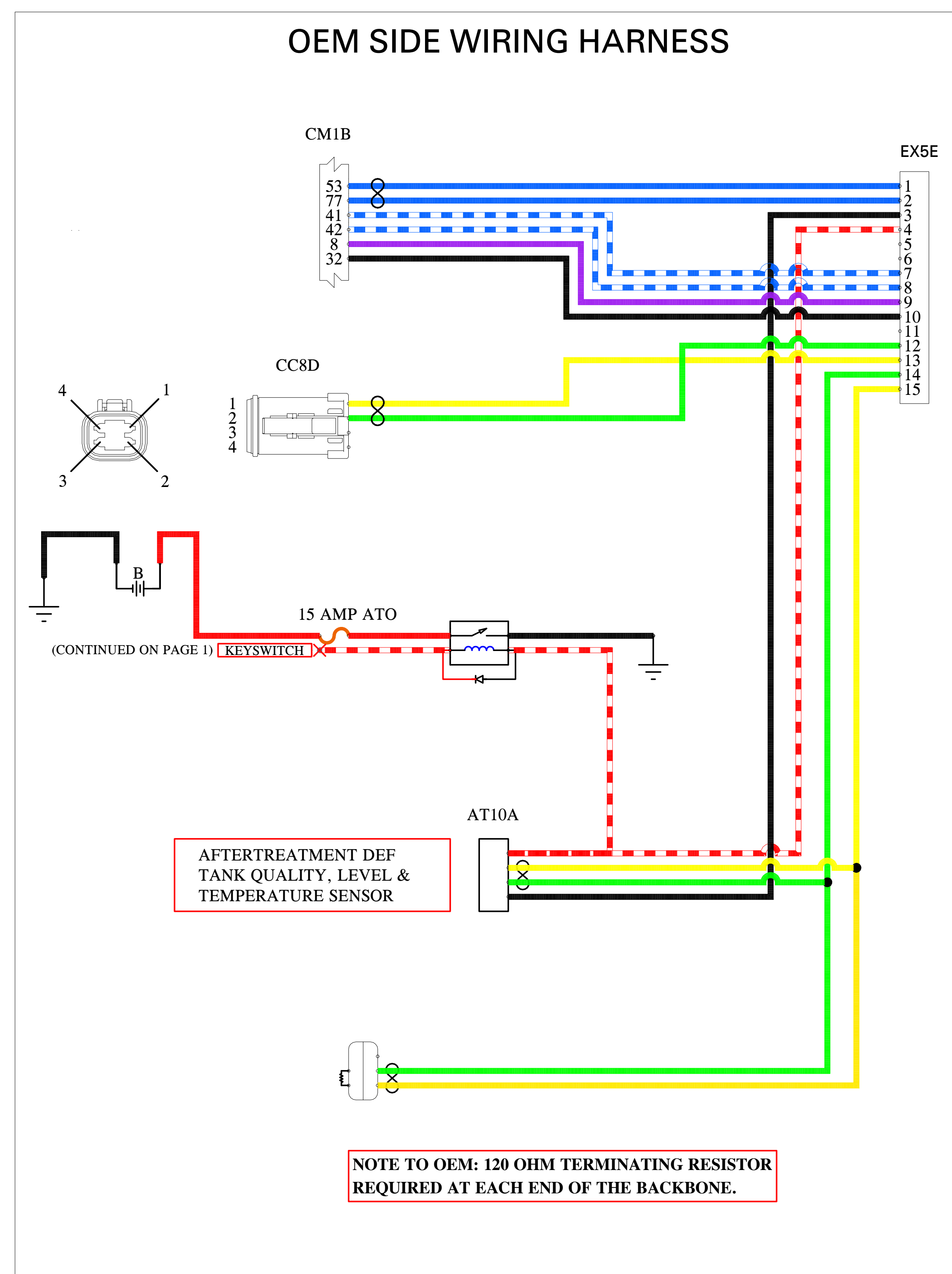
CM1B			
CONNECTOR	DELPHI	13964572	
ALT CONNECTOR	NONE	NONE	
TERMINAL PLATING	DELPHI	AG	
TPA/WEDGE	DELPHI	15494608	
CAVITY PLUG	DELPHI	15318164	
CONNECTOR	DELPHI	13964572	
ALT CONNECTOR	NONE	NONE	
TERMINAL PLATING	DELPHI	AG	
TPA/WEDGE	DELPHI	15494608	
CAVITY PLUG	DELPHI	15318164	

ENGINEERING STANDARD:	CES 10903	RELEASE NUMBER:	160072-028
ENGINEERING STANDARD:	FEP 00048356	I/O MATRIX:	CM2350 PV IO MATRIX REVISION 21
INSPECTION STANDARD:	FEP 00048355	DRAFTER:	Alicia Martinez
		DATE:	MAR 24 2020
WIRE COLOR STANDARD:	FEP 00046857	CHECKER:	Feifei Feng
		DATE:	MAR 24 2020
INDUSTRY STANDARD:	SAE J1939-15 SECTION 5.2.2	DESIGN APPROVAL:	John Jervis
		DATE:	MAR 24 2020

CUMMINS INC.			
THIS DOCUMENT (AND THE INFORMATION SHOWN THEREON) IS CONFIDENTIAL AND PROPRIETARY AND SHALL NOT BE DISCLOSED TO OTHERS IN HARD COPY OR ELECTRONIC FORM. REPRODUCED BY ANY MEANS, OR USED FOR ANY PURPOSE WITHOUT WRITTEN CONSENT OF CUMMINS INC.			
SIZE	ITEM NAME:	DIAGRAM, WIRING	
J	IDENTIFIER:	WIRING DIAGRAM	
CODE IDENT NO:	-	ITEM NUMBER:	5445380
REVISION:	4	SHEET	5 OF 7

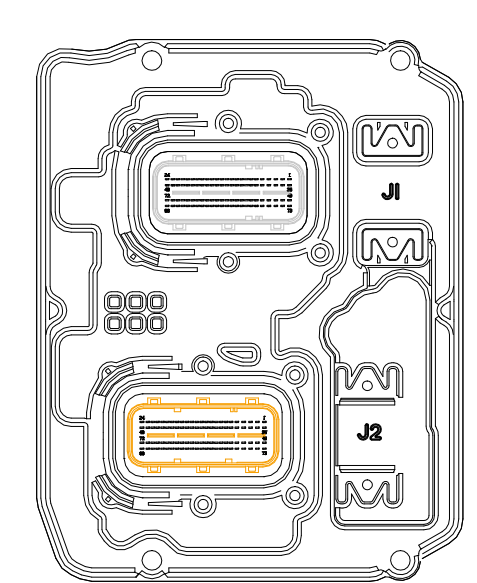
CUMMINS CONFIDENTIAL

SCR / DPF Jumper Harness Appendix



EX5F		
CONNECTOR	TYCO	1-1564530-1
2.8 TERMINAL	TYCO	1-962915-2
	DELPHI	33505427
TERMINAL PLATING	NONE	AG
CAVITY PLUG	TYCO	828922-1
CAVITY SEAL	DELPHI	15339967
	TYCO	828904
1.6 TERMINAL	DELPHI	13894085
	TYCO	964269-5
TERMINAL PLATING	NONE	AG
CAVITY PLUG	DELPHI	12198198
	TYCO	963631-1
CAVITY SEAL	DELPHI	15339412
	TYCO	964972-1
COVER	TYCO	1670865-1

CM2350A



CM1B		
CONNECTOR	DELPHI	13964572
ALT CONNECTOR	NONE	NONE
TERMINAL PLATING	DELPHI	AG
TPA/WEDGE	DELPHI	15494608
CAVITY PLUG	DELPHI	15318164
CONNECTOR	DELPHI	13964572
ALT CONNECTOR	NONE	NONE
TERMINAL PLATING	DELPHI	AG
TPA/WEDGE	DELPHI	15494608
CAVITY PLUG	DELPHI	15318164

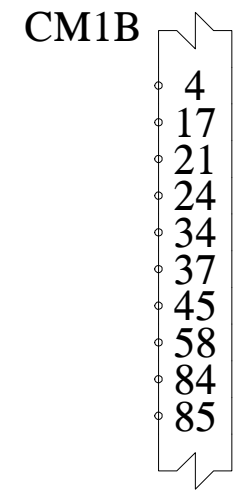
ENGINEERING STANDARD:	CES 10903	RELEASE NUMBER:	160072-028
ENGINEERING STANDARD:	FEP 00048356	I/O MATRIX:	CM2350 PV IO MATRIX REVISION 21
INSPECTION STANDARD:	FEP 00048355	DRAFTER:	Alicia Martinez
		DATE:	MAR 24 2020
WIRE COLOR STANDARD:	FEP 00046857	CHECKER:	Feifei Feng
		DATE:	MAR 24 2020
INDUSTRY STANDARD:	SAE J1939-15 SECTION 5.2.2	DESIGN APPROVAL:	John Jervis
		DATE:	MAR 24 2020

CUMMINS INC.

THIS DOCUMENT (AND THE INFORMATION SHOWN THEREON) IS CONFIDENTIAL AND PROPRIETARY AND SHALL NOT BE DISCLOSED TO OTHERS IN HARD COPY OR ELECTRONIC FORM. REPRODUCED BY ANY MEANS, OR USED FOR ANY PURPOSE WITHOUT WRITTEN CONSENT OF CUMMINS INC.

SIZE	J	ITEM NAME:	DIAGRAM, WIRING
		IDENTIFIER:	WIRING DIAGRAM
CODE IDENT NO:	-	ITEM NUMBER:	5445380
REVISION:	4	SHEET	6 OF 7

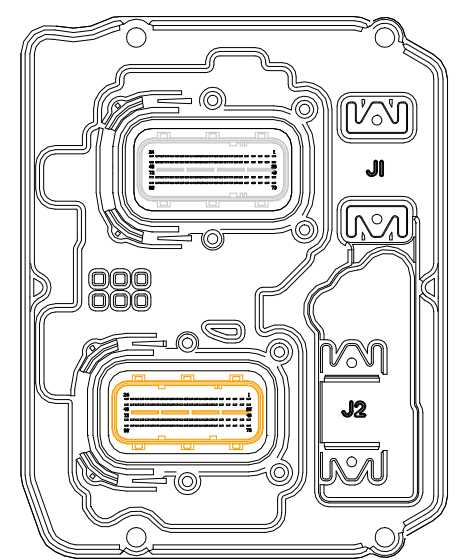
J2 PINS NOT CONNECTED



REVISION HISTORY TABLE

REVISION NUMBER	DATE	WIRING DIAGRAM CHANGES
4	MAR 24 2020	FP RELEASE DCR 4115561 Document confidentiality was updated.
3	AUG 23 2019	LP Release Revision 3 - CR 3490820 Aftertreatment SCR/DPF Jumper Harness Appendix was added to the wiring diagram.
2	MAY 15 2019	LP Release Revision 2 - CR 3388623 Sheet 1: 9-Pin OBD connector was updated to meet SAE J1939-13 pin out. Terminating Resistor note for the OEM was updated to : 120 Ohm Terminating resistor is required at each end of the backbone.
1	13 FEB 2019	LP Release Revision 1 Sheet 1: J2-62 was updated to OEM Switch/ OEM Sensor/ Tachometer Drive Output (Returns) Sheet 3: J1-67, J1-87, J1-41 were renamed as Spare Analog Sensor Signal. Sheet 4: Keyswitch signal and Relay K1 were deleted and Battery wiring was updated as improvement, appendix name was renamed to Regular Start used for Non Stop /Start and Non Push Button Start. Sheet 5: Keyswitch signal and Relay K1 were deleted and Battery wiring was updated as improvement, appendix name was renamed to ECM Controlled Start used for Stop /Start and Push Button Start. AEB table note 3 was updated to Refer the AEB's 00515 and 0014 to this Wiring diagram.
0	18 OCT 2018	LP Release Sheet 1: Return signal J2-62 was added to Tachometer, J2-90 CRUISE CONTROL ON-OFF/ ENGINE MULTIPLE UNIT SYNCHRONIZATION (SWITCHES) was updated to CRUISE CONTROL ON-OFF SWITCH, J2-47 OEM / MULTIPLE UNIT SYNCHRONIZATION 3 (SWITCHES) was updated to OEM SWITCH J2-70 AUXILIARY GOVERNOR/PARKING BRAKE/ MULTIPLE UNIT SYNCHRONIZATION ENABLE (SWITCHES) was updated to AUXILIARY GOVERNOR/ PARKING BRAKE (SWITCHES), J2-68 ENGINE BRAKE SELECTOR 1 / MULTIPLE UNIT SYNCHRONIZATION 2 (SWITCHES) was updated to ENGINE BRAKE SELECTOR SWITCH 1, J2-92 CLUTCH PEDAL POSITION/SERVICE BRAKE PEDAL/MULTIPLE UNIT SYNCHRONIZATION 1 (SWITCHES) was updated to CLUTCH PEDAL POSITION/SERVICE BRAKE PEDAL (SWITCHES), Double Pole Single Throw Switch was added to battery section. Sheet 2: Fan Speed Signal (HORTON) wire break flag color was updated from black to gray, OEM PRESURE SIGNAL 1 was updated to OEM PRESSURE SENSOR SIGNAL 1 OEM PRESURE SENSOR 2 was updated to OEM PRESSURE SENSOR SIGNAL 2, J2-16 wire color was updated from Blue to Blue/White Sheet 3: J1-67 SPARE ANALOG SIGNAL wire color was updated from blue/white to blue, J1-87 SPARE ANALOG SIGNAL wire color was updated from gray to blue J1-21 FAN SPEED SIGNAL (HORTON) wire and wire break color were updated from blue to gray, J1-19 FAN SPEED SIGNAL wire break flag color was updated from blue to gray J1-41 SPARE ANALOG SIGNAL SPARE ANALOG SIGNAL wire color was updated from blue/white to blue, 14 Pin Cross over connector part number visual aid was updated from ENGINE SIDE CROSS OVER CONNECTOR 10763414 to OEM SIDE CROSS OVER CONNECTOR 13533441, CCIB table was renamed to CCID, Connector part number was updated from FRAMATOME 54201411 to DELPHI 13533441, last row was updated from PART NUMBER - DELPHI - 10763414 to ALT CONNECTOR - FRAMATOME - 54201412 4 Pin Cross over connector TPA/WEDGE row was updated from NONE - NONE to TYCO - W4P, ALT CONNECTOR row was updated from DELPHI - DT06-4S-CE06 to NONE - NONE AT1A part number was updated from 5461850 to 5491433 and AT2A part number was updated from 5461851 to 5491434 Sheet 4: Appendix for Regular Start used for Non Start/Stop and Non PBS was added. Sheet 5: Appendix for Normal Stop/Start was renamed to ECM Controlled Start used for Stop/Start and PSB, Relay K2 was added the Starter Solenoid Circuit, DPST Disconnect Switch is superseding to Master Disconnect Switch. CEB table was updated to indicate the CEB's that apply to this OEM Side Wiring Diagram
2	14 JUN 2018	Sheet 1: Battery Ground Symbol was deleted from Line Heaters, Sheet 5: J2-31 and J2-65 were removed from J2 Not Connected Pins Table. Sheet 2: Battery Ground Symbol was added to DEF Dosing Supply Module Cavity 6.
1	23 APR 2018	Sheet 1: J2-84 Aftertreatment DEF Heater Current Monitor 1 was deleted, J2-85 Aftertreatment DEF Heater Current Monitor 2 was deleted, Ground symbol was added to indicate Hose Heating Return Sheet 2: AT32A Ref Def List was added to Aftertreatment DEF Dosing Valve, Fan Clutch Return/ Reversible Fan Clutch Return, return at Pin 2 Was rerouted from AT6A & AT6B Pin 57 to pin 54, AT11A connector part number was updated from 54200410 to F715600, Digital VSS Option3 was removed, Twisted wires symbol: AT32A was added, AT6A & AT6B was added, AT DPF Differential Pressure Sensor was deleted, OEM Pressure Sensor 1 was deleted, OEM Pressure Sensor 2 was deleted Sheet 3: AT1E part number was updated from 4384391 to 5461850, AT2A part number was updated from 4384390 to 5461851, AT7A was updated to Aftertreatment DOC Thermocouple Controller AT8A was updated to Aftertreatment SCR Thermocouple Controller, AT9A QUAD EGTS: supply was rerouted to pin 1 and return to pin 4. Twisted wires symbol: OEM Temperature sensor was deleted. Sheet 4: Normal Stop/Start was added to the wiring diagram. AEB table was updated: 4. For additional information regarding Twisted Pair/ Triplets, refer to CEB 00515.
0	3 JAN 2018	Initial Draft Beta

CM2350A



J1-GRAY
J2-BROWN

CMIB	DELPHI	13964572
CONNECTOR	DELPHI	13964572
ALT CONNECTOR	NONE	NONE
TERMINAL PLATING	DELPHI	AG
TPA/WEDGE	DELPHI	15494608
CAVITY PLUG	DELPHI	15318164
CONNECTOR	DELPHI	13964572
ALT CONNECTOR	NONE	NONE
TERMINAL PLATING	DELPHI	AG
TPA/WEDGE	DELPHI	15494608
CAVITY PLUG	DELPHI	15318164

ENGINEERING STANDARD:	CES 10903	RELEASE NUMBER:	160072-028
ENGINEERING STANDARD:	FEP 00048356	I/O MATRIX:	CM2350 PV IO MATRIX REVISION 21
INSPECTION STANDARD:	FEP 00048355	DRAFTER:	Alicia Martinez
		DATE:	MAR 24 2020
WIRE COLOR STANDARD:	FEP 00046857	CHECKER:	Feifei Feng
		DATE:	MAR 24 2020
INDUSTRY STANDARD:	SAE J1939-15 SECTION 5.2.2	DESIGN APPROVAL:	John Jervis
		DATE:	MAR 24 2020

CUMMINS INC.

THIS DOCUMENT (AND THE INFORMATION SHOWN THERON) IS CONFIDENTIAL AND PROPRIETARY AND SHALL NOT BE DISCLOSED TO OTHERS IN HARD COPY OR ELECTRONIC FORM, REPRODUCED BY ANY MEANS, OR USED FOR ANY PURPOSE WITHOUT WRITTEN CONSENT OF CUMMINS INC.

SIZE	J	ITEM NAME:	DIAGRAM, WIRING
		IDENTIFIER:	WIRING DIAGRAM
CODE IDENT NO:	-	ITEM NUMBER:	5445380
REVISION:	4	SHEET	7 OF 7